

Product Datasheet

CTLA-4 Antibody (9H10) - Chimeric - Azide and BSA Free NBP3-11966-0.2mg

Unit Size: 0.2 mg

Store at 4C for up to 3 months. For longer storage, aliquot and store at -20C.

www.novusbio.com



technical@novusbio.com

Protocols, Publications, Related Products, Reviews, Research Tools and Images at:
www.novusbio.com/NBP3-11966

Updated 9/9/2025 v.20.1

Earn rewards for product
reviews and publications.

Submit a publication at www.novusbio.com/publications

Submit a review at www.novusbio.com/reviews/destination/NBP3-11966



NBP3-11966-0.2mg

CTLA-4 Antibody (9H10) - Chimeric - Azide and BSA Free

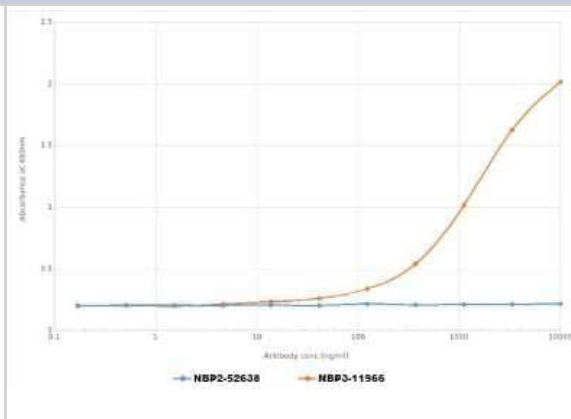
Product Information	
Unit Size	0.2 mg
Concentration	1 mg/ml
Storage	Store at 4C for up to 3 months. For longer storage, aliquot and store at -20C.
Clonality	Monoclonal
Clone	9H10
Preservative	0.02% Proclin 300
Isotype	IgG Kappa
Purity	Protein A purified
Buffer	PBS

Product Description	
Description	Novus Biologicals Rabbit CTLA-4 Antibody (9H10) - Chimeric - Azide and BSA Free (NBP3-11966) is a recombinant monoclonal antibody validated for use in WB, ELISA and Flow. All Novus Biologicals antibodies are covered by our 100% guarantee.
Host	Rabbit
Gene ID	1493
Gene Symbol	CTLA4
Species	Mouse
Specificity/Sensitivity	This antibody is specific for murine CTLA-4, an inhibitory receptor that acts as the primary negative regulator of T-cell responses. CTLA-4 is expressed predominantly by activated T cells, with significantly higher levels of expression on CD8+ T cells than CD4+ T cells.
Immunogen	This antibody was raised by immunising Syrian hamsters with Staphylococcus A bacteria coated in CTLA-4, isolating B cells from the immunised hamsters and fusing these with the P3X3.Ag8.653 myeloma line to produce stable hybridomas.

Product Application Details	
Applications	Western Blot, ELISA, Flow Cytometry, Neutralization
Recommended Dilutions	Western Blot, Flow Cytometry, ELISA, Neutralization
Application Notes	This chimeric rabbit antibody was made using the variable domain sequences of the original Hamster IgG2 format, for improved compatibility with existing reagents, assays and techniques.

Images

ELISA: CTLA-4 Antibody (9H10) - Chimeric [NBP3-11966] - Binding curves of the rabbit chimeric version of the anti-CTLA-4 antibody 9H10 (NBP3-11966; red line) and isotype control (anti-Fluorescein antibody NBP2-52638 4-4-20 (enhanced); blue line) to an ELISA plate coated with mouse CTLA-4-Fc fusion protein at a concentration of 5 ug/ml. A 3-fold serial dilution from 10,000 to 0.17 ng/ml was performed using NBP3-11966. For signal detection, a 1:4000 dilution of HRP-labelled anti-rabbit IgG1 antibody was used.





Novus Biologicals USA

10730 E. Briarwood Avenue
Centennial, CO 80112
USA
Phone: 303.730.1950
Toll Free: 1.888.506.6887
Fax: 303.730.1966
nb-customerservice@bio-techne.com

Bio-Techne Canada

21 Canmotor Ave
Toronto, ON M8Z 4E6
Canada
Phone: 905.827.6400
Toll Free: 855.668.8722
Fax: 905.827.6402
canada.inquires@bio-techne.com

Bio-Techne Ltd

19 Barton Lane
Abingdon Science Park
Abingdon, OX14 3NB, United Kingdom
Phone: (44) (0) 1235 529449
Free Phone: 0800 37 34 15
Fax: (44) (0) 1235 533420
info.EMEA@bio-techne.com

General Contact Information

www.novusbio.com
Technical Support: nb-technical@bio-techne.com
Orders: nb-customerservice@bio-techne.com
General: novus@novusbio.com

Products Related to NBP3-11966-0.2mg

NBP2-33376H	Blue Marker Antibody (6F4-F6) [HRP]
HAF008	Goat anti-Rabbit IgG Secondary Antibody [HRP]
NB7160	Goat anti-Rabbit IgG (H+L) Secondary Antibody [HRP]
NBP2-22987	Recombinant Human CTLA-4 His Protein

Limitations

This product is for research use only and is not approved for use in humans or in clinical diagnosis. Primary Antibodies are guaranteed for 1 year from date of receipt.

For more information on our 100% guarantee, please visit www.novusbio.com/guarantee

Earn gift cards/discounts by submitting a review: www.novusbio.com/reviews/submit/NBP3-11966

Earn gift cards/discounts by submitting a publication using this product:
www.novusbio.com/publications

