

Product Datasheet

SARS-CoV-2 Spike Antibody - BSA Free NBP3-11940

Unit Size: 0.1 mg

Store at 4C short term. Aliquot and store at -20C long term. Avoid freeze-thaw cycles.

www.novusbio.com



technical@novusbio.com

Publications: 1

Protocols, Publications, Related Products, Reviews, Research Tools and Images at:
www.novusbio.com/NBP3-11940

Updated 9/9/2025 v.20.1

Earn rewards for product
reviews and publications.

Submit a publication at www.novusbio.com/publications

Submit a review at www.novusbio.com/reviews/destination/NBP3-11940



NBP3-11940**SARS-CoV-2 Spike Antibody - BSA Free**

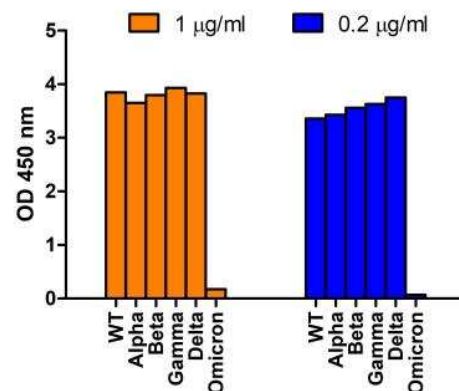
Product Information	
Unit Size	0.1 mg
Concentration	1 mg/ml
Storage	Store at 4C short term. Aliquot and store at -20C long term. Avoid freeze-thaw cycles.
Clonality	Polyclonal
Preservative	0.02% Sodium Azide
Isotype	IgG
Purity	Peptide affinity purified
Buffer	PBS

Product Description	
Description	Novus Biologicals Rabbit SARS-CoV-2 Spike Antibody - BSA Free (NBP3-11940) is a polyclonal antibody validated for use in IHC, WB, ELISA and ICC/IF. Anti-SARS-CoV-2 Spike Antibody: Cited in 1 publication. All Novus Biologicals antibodies are covered by our 100% guarantee.
Host	Rabbit
Gene ID	43740568
Gene Symbol	S
Species	SARS-CoV-2
Immunogen	Antibody was raised against a peptide corresponding to 12 amino acids near the center of SARS-CoV-2 Spike glycoprotein. The immunogen is located within 650-700 amino acids of SARS-CoV-2 Spike protein.

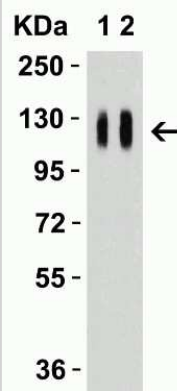
Product Application Details	
Applications	Western Blot, ELISA, Immunocytochemistry/ Immunofluorescence
Recommended Dilutions	Western Blot 0.5-4 ug/mL, ELISA, Immunocytochemistry/ Immunofluorescence 20 ug/mL

Images

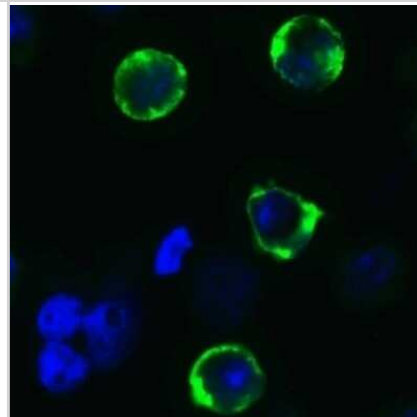
ELISA: SARS-CoV-2 Spike Antibody [NBP3-11940] - Validation of SARS-Cov-2 Spike Antibody with Spike S1 Protein of SARS-CoV-2 Variants. Coating Antigen: SARS-CoV-2 spike S1 proteins WT, alpha variant (B.1.1.7), beta variant (B.1.351), gamma variant (P.1), delta variant (B.1.617.2), and omicron variant (B.1.1.529), 1 ug/mL, incubated at 4C overnight. Detection Antibody: SARS-CoV-2 Spike antibody NBP3-11940, 0.2-1 ug/mL incubated at RT for 1 hr. Secondary Antibody: Goat anti-rabbit HRP at 1:20,000, incubate at RT for 1 hr. NBP3-11940 can detect spike S1 protein for all variants except omicron.



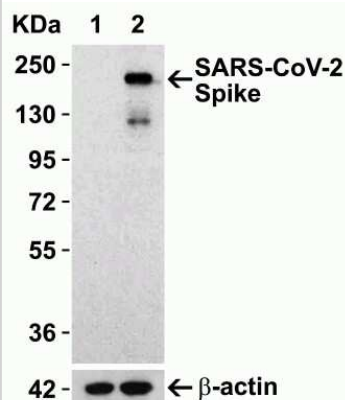
Western Blot: SARS-CoV-2 Spike Antibody [NBP3-11940] - Western Blot Validation with SARS-CoV-2 (COVID-19) Spike S1 Recombinant Protein. Loading: 50 ng per lane of SARS-CoV-2 (COVID-19) Spike S1 recombinant protein. Antibodies: SARS-CoV-2 Spike, NBP3-11940, 1h incubation at RT in 5% NFDm/TBST. Secondary: Goat anti-rabbit IgG HRP conjugate at 1:10000 dilution. Lane 1: 1 ug/mL and Lane 2: 2 ug/mL.



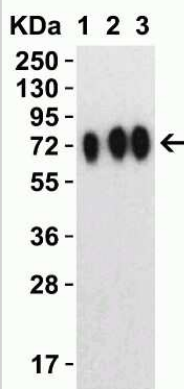
Immunocytochemistry/Immunofluorescence: SARS-CoV-2 Spike Antibody [NBP3-11940] - Immunofluorescence Validation of SARS-CoV-2 (COVID-19) Spike (cleavage site) in 293 Transfected Cells. Immunofluorescent analysis of 4% paraformaldehyde-fixed Spike transfected 293 cells labeling SARS-CoV-2 (COVID-19) Spike (cleavage site) with NBP3-11940 at 10 mg/mL, followed by goat anti-rabbit IgG secondary antibody at 1/500 dilution (green) and DAPI staining (blue).



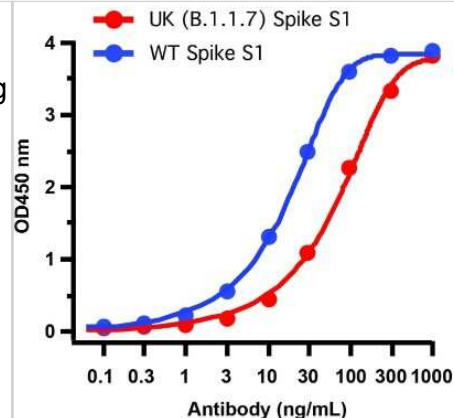
Western Blot: SARS-CoV-2 Spike Antibody [NBP3-11940] - Overexpression Validation in Spike Transfected 293 Cells. Loading: 10 ug per lane of 293 cell lysate. Antibodies: SARS-CoV-2 Spike, NBP3-11940 (0.5 ug/mL), 1h incubation at RT in 5% NFDm/TBST. Secondary: Goat anti-rabbit IgG HRP conjugate at 1:10000 dilution. Lane 1: WT 293 cells and Lane 2: SARS-CoV-2 Spike overexpressed 293 cells



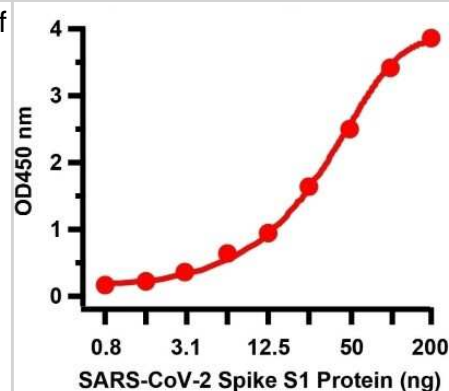
Western Blot: SARS-CoV-2 Spike Antibody [NBP3-11940] - Western Blot Validation with SARS-CoV-2 (COVID-19) Spike Recombinant Protein. Loading: 30 ng per lane of SARS-CoV-2 (COVID-19) Spike RBD +SD1+SD2 recombinant protein. Antibodies: SARS-CoV-2 Spike, NBP3-11940, 1h incubation at RT in 5% NFDm/TBST. Secondary: Goat anti-rabbit IgG HRP conjugate at 1:10000 dilution. Lane 1: 1 ug/mL, Lane 2: 2 ug/mL and Lane 3: 4 ug/mL.



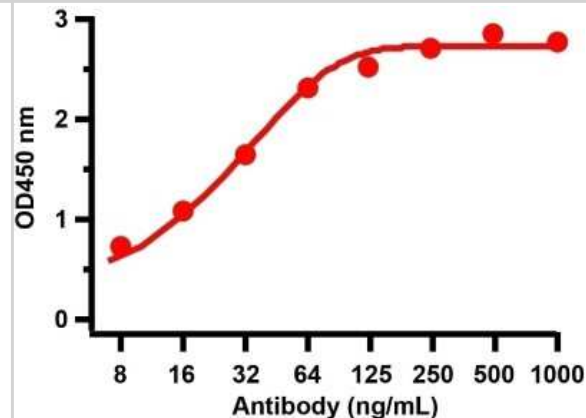
ELISA: SARS-CoV-2 Spike Antibody [NBP3-11940] - Detection of SARS-CoV-2 UK Variant Spike S1 Protein with Spike S1 Antibodies by Direct ELISA. Coating Antigen: SARS-CoV-2 spike S1 proteins, including WT and UK variant (B.1.1.7), 1 ug/mL Incubate at 4C overnight. Detection Antibodies: SARS-CoV-2 Spike Antibody, NBP3-11940, dilution: 0.1-1000 ng/mL, incubate at RT for 1 hr. Secondary Antibodies: Goat anti-rabbit HRP at 1:20,000, incubate at RT for 1 hr. Immunogen region of antibody NBP3-11940 includes site 681P that was mutated in B.1.1.7.. SARS-CoV-2 Spike antibody (NBP3-11940) has lower binding affinity for variant S1 protein as compared to WT S1 protein.



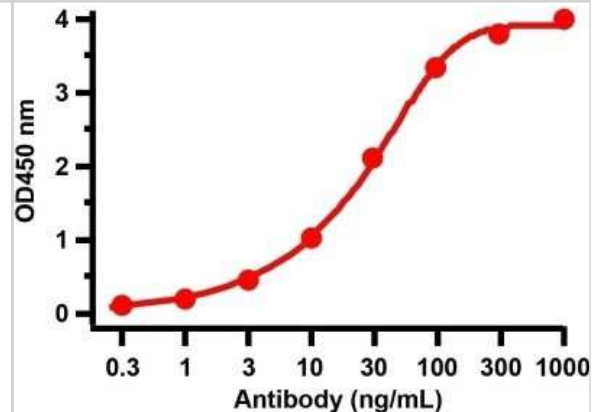
ELISA: SARS-CoV-2 Spike Antibody [NBP3-11940] - ELISA Validation of SARS-CoV-2 Spike Antibody Pair. A sandwich ELISA was performed using the anti-SARS-CoV-2 Spike antibodies NBP3-11940 (10 ug/mL) as the capture antibody. Biotin-labeled anti-SARS-COV-2 Spike S1 antibodies (1 ug/mL) and streptavidin-HRP (0.1 ug/mL) were used for detection. Detection range is from 0.8 ng to 200 ng (SARS-CoV-2 Spike S1 Protein).



ELISA: SARS-CoV-2 Spike Antibody [NBP3-11940] - ELISA Validation with SARS-CoV-2 (COVID-19) Spike Recombinant Protein. Antibodies: SARS-CoV-2 Spike, NBP3-11940. A direct ELISA was performed using SARS-CoV-2 (COVID-19) Spike RBD+SD1+SD2 recombinant protein, as coating antigen and the anti-SARS-CoV-2 Spike as the capture antibody. Secondary: Goat anti-rabbit IgG HRP conjugate at 1:20000 dilution. Detection range is from 8 ng/mL to 1000ng/mL.



ELISA: SARS-CoV-2 Spike Antibody [NBP3-11940] - ELISA Validation with SARS-CoV-2 (COVID-19) Spike S1 Recombinant Protein. Antibodies: SARS-CoV-2 Spike antibody, NBP3-11940 (1 ug/mL). A direct ELISA was performed using SARS-CoV-2 (COVID-19) Spike S1 recombinant protein as coating antigen and the anti-SARS-CoV-2 Spike antibody as the capture antibody. Secondary: Goat anti-rabbit IgG HRP conjugate at 1:20000 dilution. Detection range is from 0.3 ng/mL to 1000ng/mL.



Publications

V Bezzetti, V Gentili, M Api, A Finotti, C Papi, A Tamanini, C Boni, E Baldisseri, D Oliosio, M Duca, E Tedesco, S Leo, M Borgatti, S Volpi, P Pinton, G Cabrini, R Gambari, F Blasi, G Lippi, A Rimessi, R Rizzo, M Cipolli SARS-CoV-2 viral entry and replication is impaired in Cystic Fibrosis airways due to ACE2 downregulation Nature Communications, 2023-01-10;14(1):132. 2023-01-10 [PMID: 36627352]



Novus Biologicals USA

10730 E. Briarwood Avenue
Centennial, CO 80112
USA
Phone: 303.730.1950
Toll Free: 1.888.506.6887
Fax: 303.730.1966
nb-customerservice@bio-techne.com

Bio-Techne Canada

21 Canmotor Ave
Toronto, ON M8Z 4E6
Canada
Phone: 905.827.6400
Toll Free: 855.668.8722
Fax: 905.827.6402
canada.inquires@bio-techne.com

Bio-Techne Ltd

19 Barton Lane
Abingdon Science Park
Abingdon, OX14 3NB, United Kingdom
Phone: (44) (0) 1235 529449
Free Phone: 0800 37 34 15
Fax: (44) (0) 1235 533420
info.EMEA@bio-techne.com

General Contact Information

www.novusbio.com
Technical Support: nb-technical@bio-techne.com
Orders: nb-customerservice@bio-techne.com
General: novus@novusbio.com

Products Related to NBP3-11940

NBP2-33376H	Blue Marker Antibody (6F4-F6) [HRP]
HAF008	Goat anti-Rabbit IgG Secondary Antibody [HRP]
NB7160	Goat anti-Rabbit IgG (H+L) Secondary Antibody [HRP]
NBP2-24891	Rabbit IgG Isotype Control

Limitations

This product is for research use only and is not approved for use in humans or in clinical diagnosis. Primary Antibodies are guaranteed for 1 year from date of receipt.

For more information on our 100% guarantee, please visit www.novusbio.com/guarantee

Earn gift cards/discounts by submitting a review: www.novusbio.com/reviews/submit/NBP3-11940

Earn gift cards/discounts by submitting a publication using this product:
www.novusbio.com/publications

