

# Product Datasheet

## CHX10 Antibody - C-terminus - BSA Free NBP3-11891-250ug

Unit Size: 250 ug

Store at -20C. Avoid freeze-thaw cycles.

[www.novusbio.com](http://www.novusbio.com)



[technical@novusbio.com](mailto:technical@novusbio.com)

Protocols, Publications, Related Products, Reviews, Research Tools and Images at:  
[www.novusbio.com/NBP3-11891](http://www.novusbio.com/NBP3-11891)

Updated 9/9/2025 v.20.1

Earn rewards for product  
reviews and publications.

Submit a publication at [www.novusbio.com/publications](http://www.novusbio.com/publications)

Submit a review at [www.novusbio.com/reviews/destination/NBP3-11891](http://www.novusbio.com/reviews/destination/NBP3-11891)



**NBP3-11891-250ug**

CHX10 Antibody - C-terminus - BSA Free

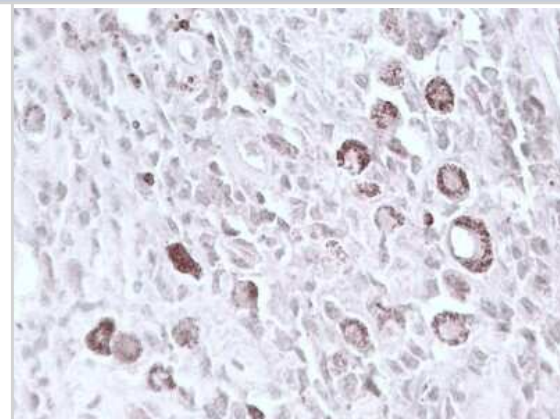
Product Information	
Unit Size	250 ug
Concentration	Please see the vial label for concentration. If unlisted please contact technical services.
Storage	Store at -20C. Avoid freeze-thaw cycles.
Clonality	Polyclonal
Preservative	0.08% Sodium Azide
Isotype	IgG
Purity	Ammonium sulfate precipitation
Buffer	PBS

Product Description	
Description	Novus Biologicals Sheep CHX10 Antibody - C-terminus - BSA Free (NBP3-11891) is a polyclonal antibody validated for use in IHC and WB. All Novus Biologicals antibodies are covered by our 100% guarantee.
Host	Sheep
Gene ID	338917
Gene Symbol	VSX2
Species	Human, Mouse, Rat, Chicken
Specificity/Sensitivity	Antibody raised against a recombinant protein corresponding to amino acids 264 to 361 derived from the C-terminal region of the human Chx10 protein conjugated to KLH.
Immunogen	Recombinant protein corresponding to amino acids 264 to 361 derived from the C-terminal region of the human CHX10 protein conjugated to KLH. (Uniprot: P58304)

Product Application Details	
Applications	Western Blot, Immunohistochemistry, Immunohistochemistry-Frozen
Recommended Dilutions	Western Blot 0.5 - 1 ug/ml, Immunohistochemistry, Immunohistochemistry-Frozen
Application Notes	Detects Chx10 by Western blot at 0.5 to 1 ug/ml. Detects a 46 kDa band in mouse and rat retinal tissue lysates. Suitable for use against recombinant proteins conjugated to OVA, GST, His tags and other..

**Images**

Immunohistochemistry: CHX10 Antibody - C-terminus [NBP3-11891] - Immunohistochemical staining of human melanoma tumor tissue using chx10 (CT) antibody. Antibody used at ~20 ug/ml.





### Novus Biologicals USA

10730 E. Briarwood Avenue  
Centennial, CO 80112  
USA  
Phone: 303.730.1950  
Toll Free: 1.888.506.6887  
Fax: 303.730.1966  
nb-customerservice@bio-techne.com

### Bio-Techne Canada

21 Canmotor Ave  
Toronto, ON M8Z 4E6  
Canada  
Phone: 905.827.6400  
Toll Free: 855.668.8722  
Fax: 905.827.6402  
canada.inquires@bio-techne.com

### Bio-Techne Ltd

19 Barton Lane  
Abingdon Science Park  
Abingdon, OX14 3NB, United Kingdom  
Phone: (44) (0) 1235 529449  
Free Phone: 0800 37 34 15  
Fax: (44) (0) 1235 533420  
info.EMEA@bio-techne.com

### General Contact Information

www.novusbio.com  
Technical Support: nb-technical@bio-techne.com  
Orders: nb-customerservice@bio-techne.com  
General: novus@novusbio.com

### Products Related to NBP3-11891-250ug

---

NBP2-33376H	Blue Marker Antibody (6F4-F6) [HRP]
HAF016	Donkey anti-Sheep IgG Secondary Antibody [HRP]
NL010	Donkey anti-Sheep IgG Secondary Antibody [NL557]
NBP1-97055-10mg	Sheep IgG Isotype Control

---

### Limitations

This product is for research use only and is not approved for use in humans or in clinical diagnosis. Primary Antibodies are guaranteed for 1 year from date of receipt.

For more information on our 100% guarantee, please visit [www.novusbio.com/guarantee](http://www.novusbio.com/guarantee)

Earn gift cards/discounts by submitting a review: [www.novusbio.com/reviews/submit/NBP3-11891](http://www.novusbio.com/reviews/submit/NBP3-11891)

Earn gift cards/discounts by submitting a publication using this product:  
[www.novusbio.com/publications](http://www.novusbio.com/publications)

