

# Product Datasheet

## KLF2 Antibody - BSA Free NBP3-10956-100ul

Unit Size: 100 ul

Store at 4C short term. Aliquot and store at -20C long term. Avoid freeze-thaw cycles.

[www.novusbio.com](http://www.novusbio.com)



[technical@novusbio.com](mailto:technical@novusbio.com)

Protocols, Publications, Related Products, Reviews, Research Tools and Images at:  
[www.novusbio.com/NBP3-10956](http://www.novusbio.com/NBP3-10956)

Updated 9/23/2025 v.20.1

Earn rewards for product  
reviews and publications.

Submit a publication at [www.novusbio.com/publications](http://www.novusbio.com/publications)

Submit a review at [www.novusbio.com/reviews/destination/NBP3-10956](http://www.novusbio.com/reviews/destination/NBP3-10956)



**NBP3-10956-100ul**

KLF2 Antibody - BSA Free

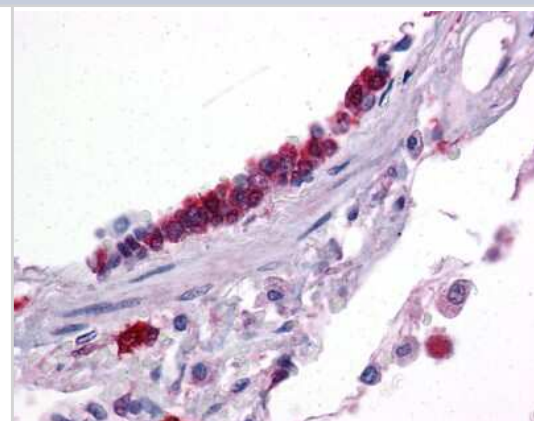
Product Information	
Unit Size	100 ul
Concentration	0.5 mg/ml
Storage	Store at 4C short term. Aliquot and store at -20C long term. Avoid freeze-thaw cycles.
Clonality	Polyclonal
Preservative	0.09% Sodium Azide
Purity	Affinity purified
Buffer	PBS, 2% Sucrose
Target Molecular Weight	37 kDa

Product Description	
Description	Novus Biologicals Rabbit KLF2 Antibody - BSA Free (NBP3-10956) is a polyclonal antibody validated for use in IHC and WB. All Novus Biologicals antibodies are covered by our 100% guarantee.
Host	Rabbit
Gene ID	10365
Gene Symbol	KLF2
Species	Human
Immunogen	The immunogen is a synthetic peptide directed towards the middle region of human KLF2 (NP_057354). Peptide sequence PPAFGLFDDAAAAAALGLAPPAARGLLTPPASPLELLEAKPKRGRRSWP

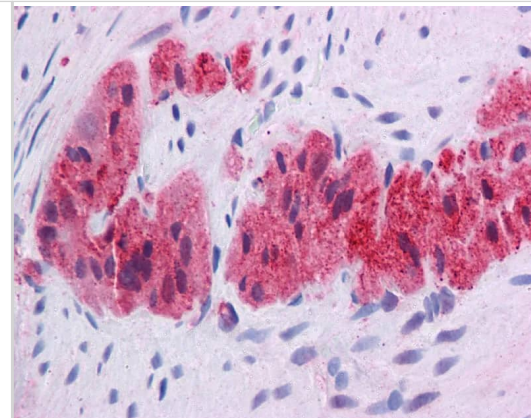
Product Application Details	
Applications	Western Blot, Immunohistochemistry, Chromatin Immunoprecipitation (ChIP)
Recommended Dilutions	Western Blot 1.0 ug/ml, Immunohistochemistry, Chromatin Immunoprecipitation (ChIP)

**Images**

Immunohistochemistry: KLF2 Antibody [NBP3-10956] -  
Immunohistochemical analysis of human lung

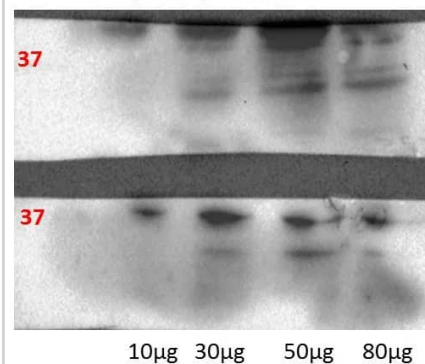


Immunohistochemistry with Human Colon, myenteric plexus

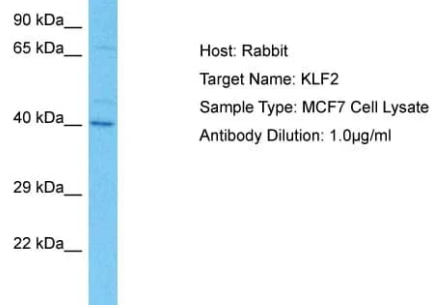


Human lung cell line

KLF2 (32760) – 1:1000



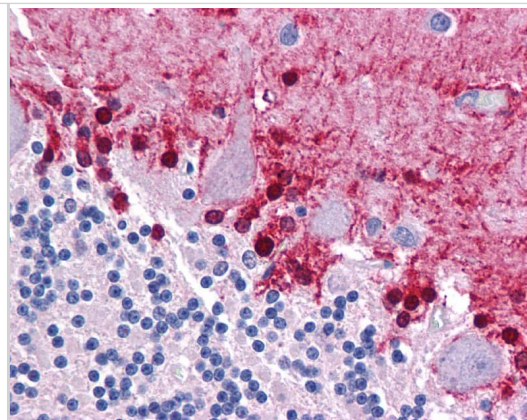
Host: Rabbit Target Name: KLF2 Sample Tissue: Human MCF7 Whole Cell Antibody Dilution: 1ug/ml



WB Suggested Anti-KLF2 Antibody Titration: 0.2-1 ug/ml ELISA Titer: 1:312500 Positive Control: 721\_B cell lysate

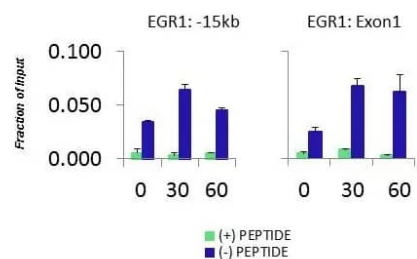


Immunohistochemistry with Human brain, cerebellum

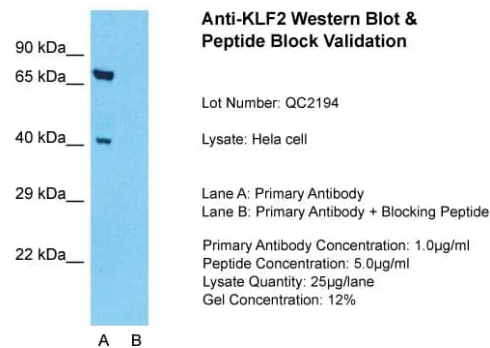


Quiescent human colon carcinoma HCT116 cultures were treated with 10% FBS for three time points (0, 15, 30min) or (0, 30, 60min) were used in Matrix-ChIP and real-time PCR assays at EGR1 gene (Exon1) and 15kb upstream site.

**HCT116 serum response  
KLF2  
Matrix-ChIP**

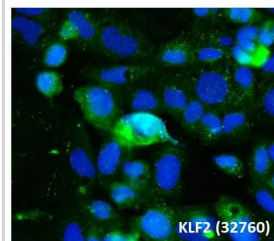


Host: Rabbit Target Name: KLF2 Sample Type: Hela Whole cell Lane A: Primary Antibody Lane B: Primary Antibody + Blocking Peptide Primary Antibody Concentration: 1ug/ml Peptide Concentration: 5ug/ml Lysate Quantity: 25ug/lane Gel Concentration: 0.12%

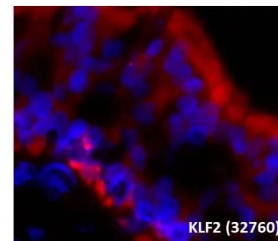


Human lung epithelial cell

Human lung sections



Human lung sections





### **Novus Biologicals USA**

10730 E. Briarwood Avenue  
Centennial, CO 80112  
USA  
Phone: 303.730.1950  
Toll Free: 1.888.506.6887  
Fax: 303.730.1966  
nb-customerservice@bio-techne.com

### **Bio-Techne Canada**

21 Canmotor Ave  
Toronto, ON M8Z 4E6  
Canada  
Phone: 905.827.6400  
Toll Free: 855.668.8722  
Fax: 905.827.6402  
canada.inquires@bio-techne.com

### **Bio-Techne Ltd**

19 Barton Lane  
Abingdon Science Park  
Abingdon, OX14 3NB, United Kingdom  
Phone: (44) (0) 1235 529449  
Free Phone: 0800 37 34 15  
Fax: (44) (0) 1235 533420  
info.EMEA@bio-techne.com

### **General Contact Information**

www.novusbio.com  
Technical Support: nb-technical@bio-techne.com  
Orders: nb-customerservice@bio-techne.com  
General: novus@novusbio.com

### **Products Related to NBP3-10956-100ul**

---

NBP2-33376H	Blue Marker Antibody (6F4-F6) [HRP]
HAF008	Goat anti-Rabbit IgG Secondary Antibody [HRP]
NB7160	Goat anti-Rabbit IgG (H+L) Secondary Antibody [HRP]
H00010365-Q01-10ug	Recombinant Human KLF2 GST (N-Term) Protein

---

### **Limitations**

This product is for research use only and is not approved for use in humans or in clinical diagnosis. Primary Antibodies are guaranteed for 1 year from date of receipt.

For more information on our 100% guarantee, please visit [www.novusbio.com/guarantee](http://www.novusbio.com/guarantee)

Earn gift cards/discounts by submitting a review: [www.novusbio.com/reviews/submit/NBP3-10956](http://www.novusbio.com/reviews/submit/NBP3-10956)

Earn gift cards/discounts by submitting a publication using this product:  
[www.novusbio.com/publications](http://www.novusbio.com/publications)

