

# Product Datasheet

## Common beta Chain Antibody (BION-1) - Chimeric - Azide and BSA Free NBP3-09025-0.2mg

Unit Size: 0.2 mg

Store at 4C short term. Aliquot and store at -20C long term. Avoid freeze-thaw cycles.

[www.novusbio.com](http://www.novusbio.com)



[technical@novusbio.com](mailto:technical@novusbio.com)

Reviews: 1

Protocols, Publications, Related Products, Reviews, Research Tools and Images at:  
[www.novusbio.com/NBP3-09025](http://www.novusbio.com/NBP3-09025)

Updated 9/9/2025 v.20.1

Earn rewards for product  
reviews and publications.

Submit a publication at [www.novusbio.com/publications](http://www.novusbio.com/publications)

Submit a review at [www.novusbio.com/reviews/destination/NBP3-09025](http://www.novusbio.com/reviews/destination/NBP3-09025)



**NBP3-09025-0.2mg**

Common beta Chain Antibody (BION-1) - Chimeric - Azide and BSA Free

<b>Product Information</b>	
<b>Unit Size</b>	0.2 mg
<b>Concentration</b>	1 mg/ml
<b>Storage</b>	Store at 4C short term. Aliquot and store at -20C long term. Avoid freeze-thaw cycles.
<b>Clonality</b>	Monoclonal
<b>Clone</b>	BION-1
<b>Preservative</b>	0.02% Proclin 300
<b>Isotype</b>	IgG Kappa
<b>Purity</b>	Protein A purified
<b>Buffer</b>	PBS
<b>Product Description</b>	
<b>Description</b>	Novus Biologicals Rabbit Common beta Chain Antibody (BION-1) - Chimeric - Azide and BSA Free (NBP3-09025) is a recombinant monoclonal antibody validated for use in IHC, WB, Flow, ICC/IF and IP. All Novus Biologicals antibodies are covered by our 100% guarantee.
<b>Host</b>	Rabbit
<b>Gene ID</b>	1439
<b>Gene Symbol</b>	CSF2RB
<b>Species</b>	Human
<b>Specificity/Sensitivity</b>	Binds to domain 4 of the common beta-chain and recognises the same binding site used by IL-5, GM-CSF and IL-3, or binds to an epitope in close proximity to it. Residues M363, R364, E366 (B-C loop) and R418 (F-G loop) in the common beta-chain are important for BION-1 binding.
<b>Immunogen</b>	BALB/c mice were immunized intraperitoneally with COS cells transfected DQP (Domain 4 of the common beta-chain) expression constructs. The immunizations were repeated 4 times at 2-week intervals. Four weeks after the final immunization, a mouse was boosted with COS transfectants intravenously. Three days later, splenocytes were harvested and fused with NS-1 myeloma cells. Hybridoma supernatants were screened on CHO DQP cells by flow cytometry, with untransfected CHO cells as a control. All antibodies were from single hybridoma clones as selected by a limiting dilution method. MoAbs were purified from ascites fluid or hybridoma supernatant by a protein A sepharose column.
<b>Product Application Details</b>	
<b>Applications</b>	Western Blot, Flow Cytometry, Functional, Immunocytochemistry/ Immunofluorescence, Immunohistochemistry, Immunoprecipitation, Block/Neutralize
<b>Recommended Dilutions</b>	Western Blot, Flow Cytometry, Immunohistochemistry, Immunocytochemistry/ Immunofluorescence, Immunoprecipitation, Functional, Block/Neutralize

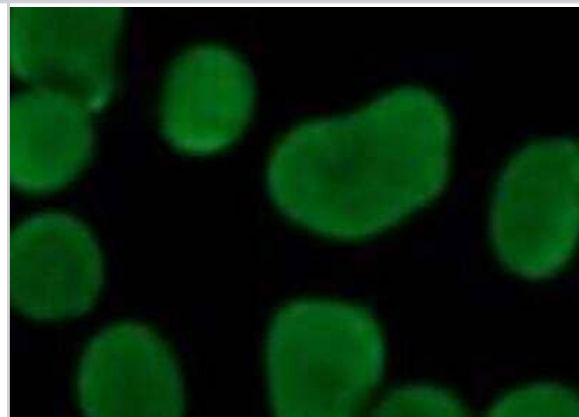
**Application Notes**

This chimeric rabbit antibody was made using the variable domain sequences of the original Mouse IgG format, for improved compatibility with existing reagents, assays and techniques.

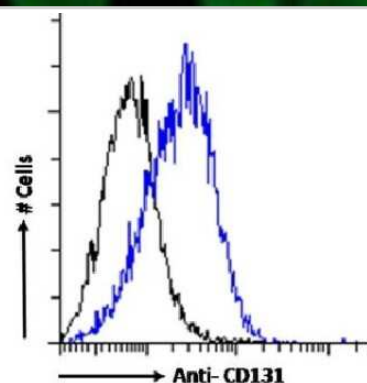
BION-1 has been shown to block eosinophil production, survival, and activation stimulated by IL-5 as well as by GM-CSF and IL-3, thereby influencing inflammation (Sun 1999). Further, BION-1 has been used in immunohistochemistry experiments in order to examine the presence of GM-CSF-receptor protein in human 8-cell embryos and blastocysts (Sjoblom 2002). In addition, a fab fragment derived from BION-1 has been used in the crystallisation of the common beta-chain to analyse the structure of the activation domain of the GM-CSF/IL-3/IL-5 receptor (Rossjohn 200).

**Images**

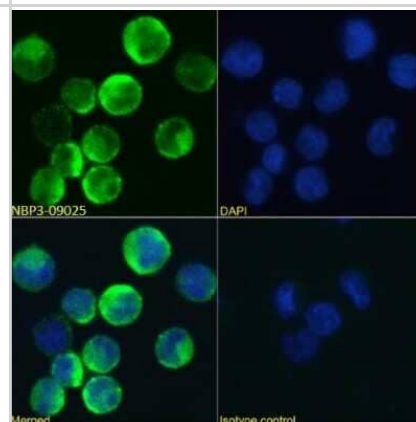
Immunocytochemistry/Immunofluorescence: Common beta Chain Antibody (BION-1) - Chimeric [NBP3-09025] - Human epithelial cells stained with NBP3-09025. ICC/IF image submitted by a verified customer review.



Flow Cytometry: Common beta Chain Antibody (BION-1) - Chimeric [NBP3-09025] - U937 cells were stained with anti-Fluorescein IgG antibody (4-4-20; isotype control, black line) or the rabbit IgG version of BION-1 ((NBP3-09025, blue line) at a dilution of 1:100 for 1h at RT. After washing, bound antibody was detected using a goat anti-rabbit IgG AlexaFluor(R) 488 antibody at a dilution of 1:1000 and cells analyzed using a FACSCanto flow-cytometer.



Immunocytochemistry/Immunofluorescence: Common beta Chain Antibody (BION-1) - Chimeric [NBP3-09025] - Immunofluorescence analysis of paraformaldehyde fixed U937 cells immobilized on Shi-fix (TM) cover-slips and stained with the chimeric rabbit IgG version of BION-1 (NBP3-09025) at 10 ug/ml followed by Alexa Fluor(R) 488 secondary antibody (2 ug/ml), showing membrane staining. The nuclear stain is DAPI (blue). Panels show from left-right, top-bottom NBP3-09025, DAPI, merged channels and an isotype control. The isotype control was stained with anti-Fluorescein antibody followed by Alexa Fluor(R) 488 secondary antibody.





### Novus Biologicals USA

10730 E. Briarwood Avenue  
Centennial, CO 80112  
USA  
Phone: 303.730.1950  
Toll Free: 1.888.506.6887  
Fax: 303.730.1966  
nb-customerservice@bio-techne.com

### Bio-Techne Canada

21 Canmotor Ave  
Toronto, ON M8Z 4E6  
Canada  
Phone: 905.827.6400  
Toll Free: 855.668.8722  
Fax: 905.827.6402  
canada.inquires@bio-techne.com

### Bio-Techne Ltd

19 Barton Lane  
Abingdon Science Park  
Abingdon, OX14 3NB, United Kingdom  
Phone: (44) (0) 1235 529449  
Free Phone: 0800 37 34 15  
Fax: (44) (0) 1235 533420  
info.EMEA@bio-techne.com

### General Contact Information

www.novusbio.com  
Technical Support: nb-technical@bio-techne.com  
Orders: nb-customerservice@bio-techne.com  
General: novus@novusbio.com

### Products Related to NBP3-09025-0.2mg

---

NBP2-33376H	Blue Marker Antibody (6F4-F6) [HRP]
HAF008	Goat anti-Rabbit IgG Secondary Antibody [HRP]
NB7160	Goat anti-Rabbit IgG (H+L) Secondary Antibody [HRP]
NBP2-52244-0.05mg	Recombinant Human Common beta Chain His Protein

---

### Limitations

This product is for research use only and is not approved for use in humans or in clinical diagnosis. Primary Antibodies are guaranteed for 1 year from date of receipt.

For more information on our 100% guarantee, please visit [www.novusbio.com/guarantee](http://www.novusbio.com/guarantee)

Earn gift cards/discounts by submitting a review: [www.novusbio.com/reviews/submit/NBP3-09025](http://www.novusbio.com/reviews/submit/NBP3-09025)

Earn gift cards/discounts by submitting a publication using this product:  
[www.novusbio.com/publications](http://www.novusbio.com/publications)

