

# Product Datasheet

## Birch pollen Bet V1 Antibody (M0418) - Chimeric - Azide and BSA Free NBP3-09013-0.2mg

Unit Size: 0.2 mg

Store at 4C short term. Aliquot and store at -20C long term. Avoid freeze-thaw cycles.

[www.novusbio.com](http://www.novusbio.com)



[technical@novusbio.com](mailto:technical@novusbio.com)

Protocols, Publications, Related Products, Reviews, Research Tools and Images at:  
[www.novusbio.com/NBP3-09013](http://www.novusbio.com/NBP3-09013)

Updated 9/9/2025 v.20.1

Earn rewards for product  
reviews and publications.

Submit a publication at [www.novusbio.com/publications](http://www.novusbio.com/publications)

Submit a review at [www.novusbio.com/reviews/destination/NBP3-09013](http://www.novusbio.com/reviews/destination/NBP3-09013)



**NBP3-09013-0.2mg**

Birch pollen Bet V1 Antibody (M0418) - Chimeric - Azide and BSA Free

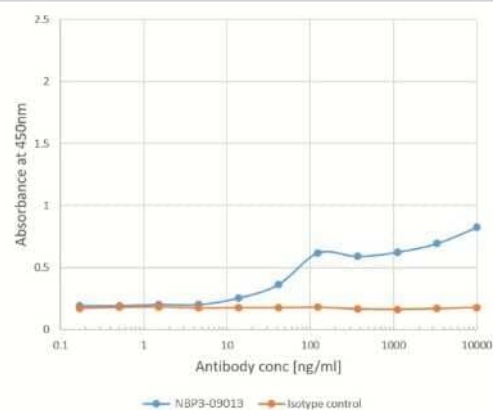
Product Information	
Unit Size	0.2 mg
Concentration	1 mg/ml
Storage	Store at 4C short term. Aliquot and store at -20C long term. Avoid freeze-thaw cycles.
Clonality	Monoclonal
Clone	M0418
Preservative	0.02% Proclin 300
Isotype	IgG Lambda
Purity	Protein A purified
Buffer	PBS

Product Description	
Description	Novus Biologicals Rabbit Birch pollen Bet V1 Antibody (M0418) - Chimeric - Azide and BSA Free (NBP3-09013) is a recombinant monoclonal antibody validated for use in ELISA. All Novus Biologicals antibodies are covered by our 100% guarantee.
Host	Rabbit
Species	Plant
Reactivity Notes	Birch ( <i>Betula pendula</i> )
Specificity/Sensitivity	This antibody binds to Bet v 1, in particular to the naturally occurring isoforms Bet v 1.0101 and Bet v 1.0102, but not to Bet v 1.0112.
Immunogen	Bet v 1-A, a major allergen of the European white birch.

Product Application Details	
Applications	ELISA, X-Ray Crystallography
Recommended Dilutions	ELISA, X-Ray Crystallography
Application Notes	<p>This full-length, chimeric rabbit antibody was made using the variable domain sequences of the original Human scFv format, for improved compatibility with existing reagents, assays and techniques.</p> <p>This antibody binds to Bet v 1 via a characterized epitope and has been used in crystallographic studies.</p>

**Images**

ELISA: Birch pollen Bet V1 Antibody (M0418) - Chimeric [NBP3-09013] - ELISA Plate coated with Birch pollen Bet V1 at a concentration of 2 ug/ml. A 3-fold serial dilution from 10,000 to 0.1 ng/ml was performed using NBP3-09013. For detection, a 1:4000 dilution of HRP-labelled goat anti-rabbit antibody was used. Absorbance at 450nm does not reach a plateau but falls slightly before increasing once more. This is suggestive of two binding sites on Birch pollen Bet V1 for which NBP3-09013 has differing affinities.





### **Novus Biologicals USA**

10730 E. Briarwood Avenue  
Centennial, CO 80112  
USA

Phone: 303.730.1950

Toll Free: 1.888.506.6887

Fax: 303.730.1966

[nb-customerservice@bio-techne.com](mailto:nb-customerservice@bio-techne.com)

### **Bio-Techne Canada**

21 Canmotor Ave  
Toronto, ON M8Z 4E6  
Canada

Phone: 905.827.6400

Toll Free: 855.668.8722

Fax: 905.827.6402

[canada.inquires@bio-techne.com](mailto:canada.inquires@bio-techne.com)

### **Bio-Techne Ltd**

19 Barton Lane  
Abingdon Science Park  
Abingdon, OX14 3NB, United Kingdom

Phone: (44) (0) 1235 529449

Free Phone: 0800 37 34 15

Fax: (44) (0) 1235 533420

[info.EMEA@bio-techne.com](mailto:info.EMEA@bio-techne.com)

### **General Contact Information**

[www.novusbio.com](http://www.novusbio.com)

Technical Support: [nb-technical@bio-techne.com](mailto:nb-technical@bio-techne.com)

Orders: [nb-customerservice@bio-techne.com](mailto:nb-customerservice@bio-techne.com)

General: [novus@novusbio.com](mailto:novus@novusbio.com)

### **Products Related to NBP3-09013-0.2mg**

HAF008

Goat anti-Rabbit IgG Secondary Antibody [HRP]

NB7160

Goat anti-Rabbit IgG (H+L) Secondary Antibody [HRP]

### **Limitations**

This product is for research use only and is not approved for use in humans or in clinical diagnosis. Primary Antibodies are guaranteed for 1 year from date of receipt.

For more information on our 100% guarantee, please visit [www.novusbio.com/guarantee](http://www.novusbio.com/guarantee)

Earn gift cards/discounts by submitting a review: [www.novusbio.com/reviews/submit/NBP3-09013](http://www.novusbio.com/reviews/submit/NBP3-09013)

Earn gift cards/discounts by submitting a publication using this product:  
[www.novusbio.com/publications](http://www.novusbio.com/publications)

