

Product Datasheet

Monkey Protein S/PROS1 ELISA Kit (Colorimetric) NBP3-08173

Unit Size: 1 Kit

Storage of components varies. See protocol for specific instructions.

www.novusbio.com



technical@novusbio.com

Protocols, Publications, Related Products, Reviews, Research Tools and Images at:
www.novusbio.com/NBP3-08173

Updated 9/10/2024 v.20.1

Earn rewards for product
reviews and publications.

Submit a publication at www.novusbio.com/publications

Submit a review at www.novusbio.com/reviews/destination/NBP3-08173

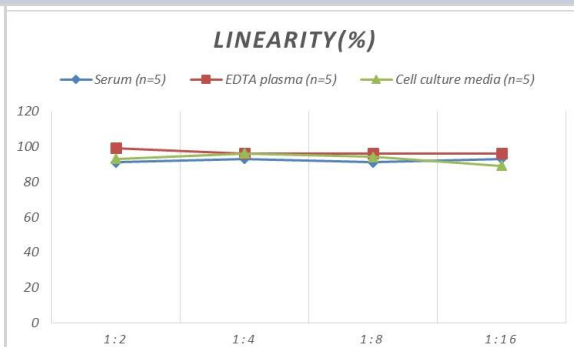


NBP3-08173**Monkey Protein S/PROS1 ELISA Kit (Colorimetric)**

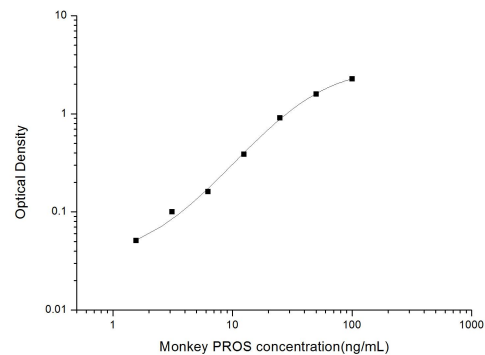
Product Information	
Unit Size	1 Kit
Concentration	Concentration is not relevant for this product. Please see the protocols for proper use of this product.
Storage	Storage of components varies. See protocol for specific instructions.
Product Description	
Gene ID	5627
Gene Symbol	PROS1
Species	Monkey
Kit Components	Micro ELISA Plate (Dismountable) - 1 EA, Reference Standard - 2 vials, Concentrated Biotinylated Detection Ab (100X) - 120 uL, Concentrated HRP Conjugate (100X) - 120 uL, Reference Standard & Sample Diluent - 20 mL, Biotinylated Detection Ab Diluent - 14
Standard Curve Range	1.56 - 100 ng/mL
Sensitivity	0.94 ng/mL
Inter Assay	%CV < 5.60
Intra Assay	%CV < 6.13
Assay Type	Sandwich-ELISA
Spiking Recovery	84 - 104%
Suitable Sample Type	Plasma
Product Application Details	
Applications	ELISA
Recommended Dilutions	ELISA

Images

ELISA: Monkey Protein S/PROS1 ELISA Kit (Colorimetric) [NBP3-08173] - Samples were spiked with high concentrations of Monkey Protein S/PROS1 and diluted with Reference Standard & Sample Diluent to produce samples with values within the range of the assay.



ELISA: Monkey Protein S/PROS1 ELISA Kit (Colorimetric) [NBP3-08173] - Standard Curve Reference





Novus Biologicals USA

10730 E. Briarwood Avenue
Centennial, CO 80112
USA
Phone: 303.730.1950
Toll Free: 1.888.506.6887
Fax: 303.730.1966
nb-customerservice@bio-techne.com

Bio-Techne Canada

21 Canmotor Ave
Toronto, ON M8Z 4E6
Canada
Phone: 905.827.6400
Toll Free: 855.668.8722
Fax: 905.827.6402
canada.inquires@bio-techne.com

Bio-Techne Ltd

19 Barton Lane
Abingdon Science Park
Abingdon, OX14 3NB, United Kingdom
Phone: (44) (0) 1235 529449
Free Phone: 0800 37 34 15
Fax: (44) (0) 1235 533420
info.EMEA@bio-techne.com

General Contact Information

www.novusbio.com
Technical Support: nb-technical@bio-techne.com
Orders: nb-customerservice@bio-techne.com
General: novus@novusbio.com

Products Related to NBP3-08173

NBP1-87217PEP	Protein S/PROS1 Recombinant Protein Antigen
AF262	Amphiregulin Antibody
AF4036	Protein S/PROS1 Antibody [Unconjugated]
AF2408	NCAM-1/CD56 Antibody [Unconjugated]

Limitations

This product is for research use only and is not approved for use in humans or in clinical diagnosis. ELISA Kits are guaranteed for 6 months from date of receipt.

For more information on our 100% guarantee, please visit www.novusbio.com/guarantee

Earn gift cards/discounts by submitting a review: www.novusbio.com/reviews/submit/NBP3-08173

Earn gift cards/discounts by submitting a publication using this product:
www.novusbio.com/publications

