

# Product Datasheet

## Lamin B1 Antibody - BSA Free NBP3-03711-100ul

Unit Size: 100 ul

Store at -20C. Avoid freeze-thaw cycles.

[www.novusbio.com](http://www.novusbio.com)



[technical@novusbio.com](mailto:technical@novusbio.com)

Protocols, Publications, Related Products, Reviews, Research Tools and Images at:  
[www.novusbio.com/NBP3-03711](http://www.novusbio.com/NBP3-03711)

Updated 2/17/2026 v.20.1

Earn rewards for product  
reviews and publications.

Submit a publication at [www.novusbio.com/publications](http://www.novusbio.com/publications)

Submit a review at [www.novusbio.com/reviews/destination/NBP3-03711](http://www.novusbio.com/reviews/destination/NBP3-03711)



**NBP3-03711-100ul**

Lamin B1 Antibody - BSA Free

Product Information	
<b>Unit Size</b>	100 ul
<b>Concentration</b>	Please see the vial label for concentration. If unlisted please contact technical services.
<b>Storage</b>	Store at -20C. Avoid freeze-thaw cycles.
<b>Clonality</b>	Polyclonal
<b>Preservative</b>	0.02% Sodium Azide
<b>Isotype</b>	IgG
<b>Purity</b>	Affinity purified
<b>Buffer</b>	PBS (pH 7.3), 50% glycerol
<b>Target Molecular Weight</b>	66 kDa

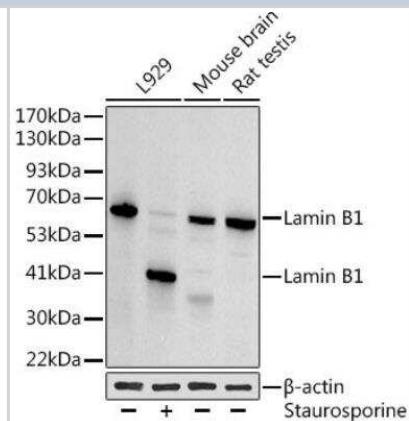
Product Description	
<b>Description</b>	Novus Biologicals Rabbit Lamin B1 Antibody - BSA Free (NBP3-03711) is a polyclonal antibody validated for use in IHC, WB, ELISA, ICC/IF, IP and ChIP. All Novus Biologicals antibodies are covered by our 100% guarantee.
<b>Host</b>	Rabbit
<b>Gene ID</b>	4001
<b>Gene Symbol</b>	LMNB1
<b>Species</b>	Human, Mouse, Rat
<b>Immunogen</b>	Recombinant fusion protein containing a sequence corresponding to amino acids 397-586 of human Lamin B1 (NP_005564.1). RVTVSRASSRSVRTRTRGKRKRVDVEESEASSSVSISHSASATGNVCIEEIDVD GKFIRLKNTSEQDQPMGGWEMIRKIGDTSVSYKYTSRYVLKAGQVTIWAANA GVTASPPTDLIWKNQNSWGTGEDVKVILKNSQGEEVAQRSTVFKTTIPEEEEE EEEEAGVVVEEELFHQQGTPRASNRSCAIM

Product Application Details	
<b>Applications</b>	Western Blot, Immunohistochemistry-Paraffin, ELISA, Immunocytochemistry/Immunofluorescence, Immunohistochemistry, Immunoprecipitation, Chromatin Immunoprecipitation (ChIP)
<b>Recommended Dilutions</b>	Western Blot 1:500 - 1:1000, ELISA Recommended starting concentration is 1 µg/mL, Immunohistochemistry 1:50 - 1:200, Immunocytochemistry/Immunofluorescence 1:50 - 1:200, Immunoprecipitation 1:500 - 1:1000, Immunohistochemistry-Paraffin, Chromatin Immunoprecipitation (ChIP) 5µg antibody for 10µg-15µg of Chromatin

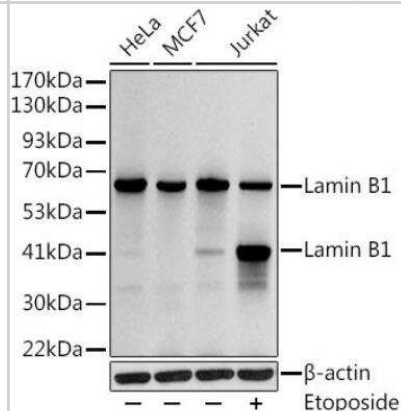


## Images

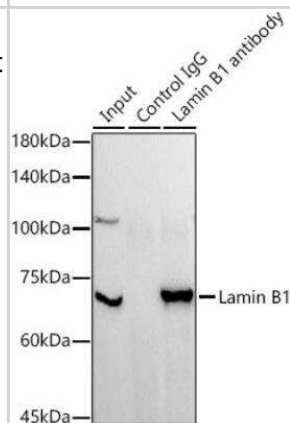
Western Blot: Lamin B1 Antibody [NBP3-03711] - Analysis of extracts of various cell lines, using Lamin B1 antibody at 1:1000 dilution. L929 cells were treated by staurosporine (1  $\mu$ M) for 3 hours. Secondary antibody: HRP Goat Anti-Rabbit IgG (H+L) at 1:10000 dilution. Lysates/proteins: 25  $\mu$ g per lane. Blocking buffer: 3% nonfat dry milk in TBST. Detection: ECL Basic Kit. Exposure time: 30s.



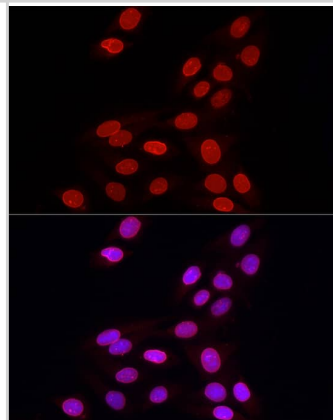
Western Blot: Lamin B1 Antibody [NBP3-03711] - Analysis of extracts of various cell lines, using Lamin B1 antibody at 1:1000 dilution. Jurkat cells were treated by Etoposide (25  $\mu$ M) at 37°C for 5 hours. Secondary antibody: HRP Goat Anti-Rabbit IgG (H+L) at 1:10000 dilution. Lysates/proteins: 25  $\mu$ g per lane. Blocking buffer: 3% nonfat dry milk in TBST. Detection: ECL Basic Kit. Exposure time: 10s.



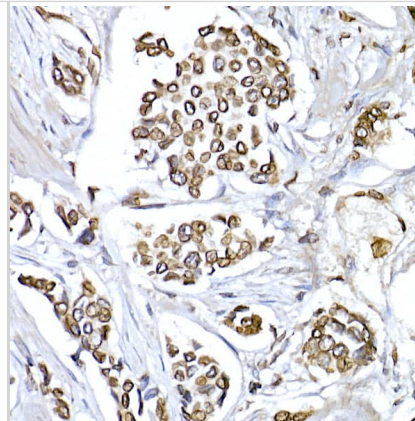
Immunoprecipitation: Lamin B1 Antibody [NBP3-03711] - Analysis of 300  $\mu$ g extracts of MCF7 cells using 3  $\mu$ g Lamin B1 antibody. Western blot was performed from the immunoprecipitate using Lamin B1 antibody at a dilution of 1:1000.



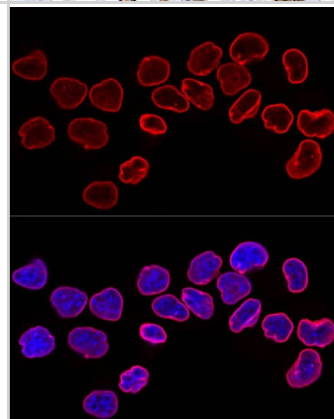
Immunocytochemistry/ Immunofluorescence: Lamin B1 Antibody - Azide and BSA Free [Lamin B1] - Immunofluorescence analysis of U2OS cells using Lamin B1 Rabbit pAb at dilution of 1:100 (40x lens). Secondary antibody: Cy3-conjugated Goat anti-Rabbit IgG (H+L) at 1:500 dilution. Blue: DAPI for nuclear staining.



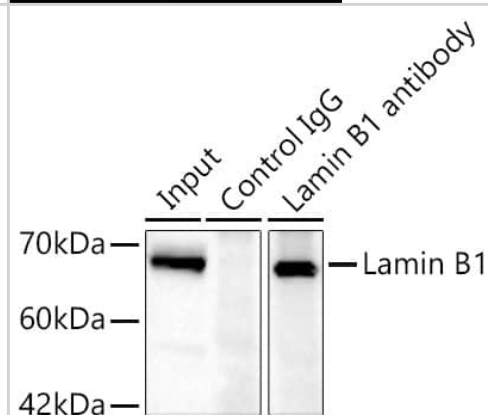
**Immunohistochemistry: Lamin B1 Antibody - Azide and BSA Free [Lamin B1]** - Immunohistochemistry analysis of paraffin-embedded Human breast cancer using Lamin B1 Rabbit pAb at dilution of 1:150 (40x lens). High pressure antigen retrieval performed with 0.01M Citrate Bufferr (pH 6.0) prior to IHC staining.



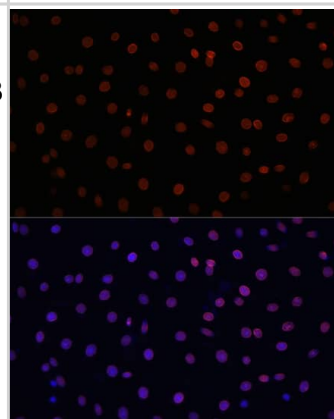
**Immunocytochemistry/ Immunofluorescence: Lamin B1 Antibody - Azide and BSA Free [Lamin B1]** - Confocal immunofluorescence analysis of HeLa cells using Lamin B1 Rabbit pAb at dilution of 1:200. Blue: DAPI for nuclear staining.



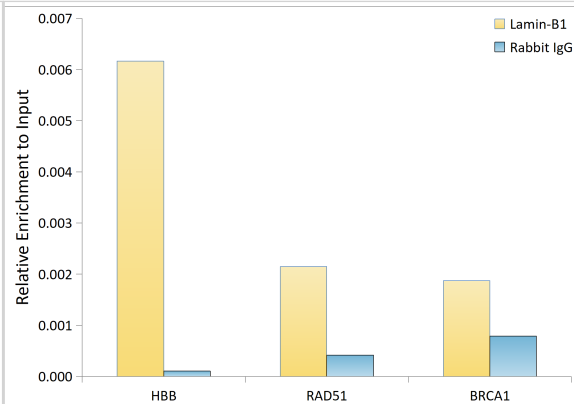
**Immunoprecipitation: Lamin B1 Antibody - Azide and BSA Free [Lamin B1]** - Immunoprecipitation of Lamin B1 in 300 ug extracts from Jurkat cells using 0.5 ug Lamin B1 Rabbit pAb . Western blot analysis was performed using Lamin B1 Rabbit pAb at 1:1000 dilution.



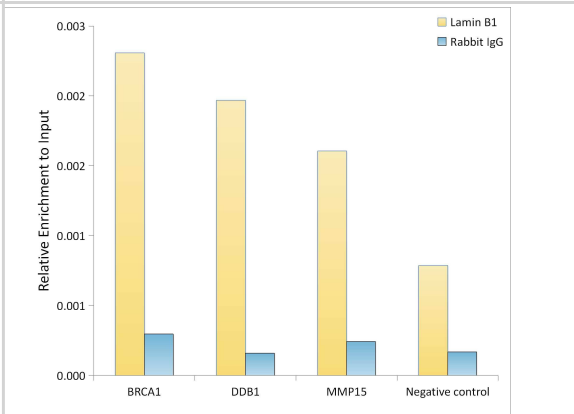
**Immunocytochemistry/ Immunofluorescence: Lamin B1 Antibody - Azide and BSA Free [Lamin B1]** - Immunofluorescence analysis of C6 cells using Lamin B1 Rabbit pAb at dilution of 1:100. Secondary antibody: Cy3-conjugated Goat anti-Rabbit IgG (H+L) at 1:500 dilution. Blue: DAPI for nuclear staining.



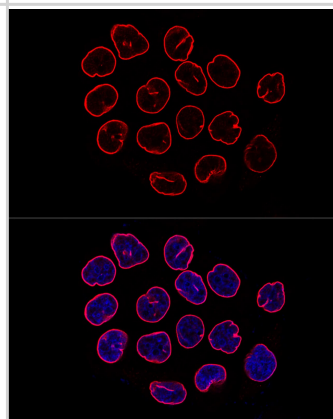
**Chromatin Immunoprecipitation: Lamin B1 Antibody - Azide and BSA Free [Lamin B1]** - Chromatin immunoprecipitation was performed with cross-linked chromatin from HeLa, using Lamin-B1 Rabbit mAb and rabbit IgG. The amount of immunoprecipitated DNA was checked by quantitative PCR. Histogram compares the ratio of the immunoprecipitated DNA versus the input.



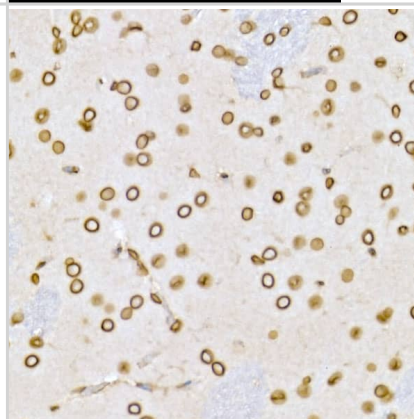
**Chromatin Immunoprecipitation: Lamin B1 Antibody - Azide and BSA Free [Lamin B1]** - Chromatin immunoprecipitation analysis of extracts of HeLa cells, using Lamin B1 Rabbit pAb antibody and rabbit IgG. The amount of immunoprecipitated DNA was checked by quantitative PCR. Histogram was constructed by the ratios of the immunoprecipitated DNA to the input.



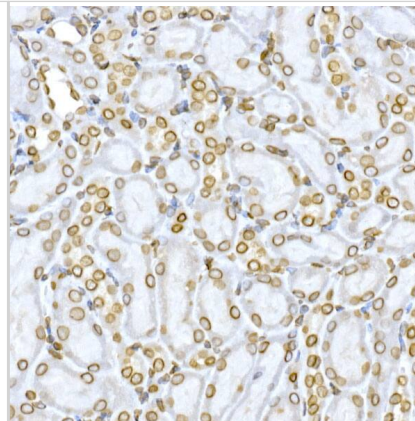
**Immunocytochemistry/ Immunofluorescence: Lamin B1 Antibody - Azide and BSA Free [Lamin B1]** - Confocal immunofluorescence analysis of HeLa cells using Lamin B1 Rabbit pAb at dilution of 1:200. Blue: DAPI for nuclear staining.



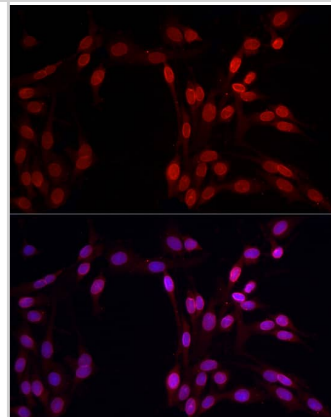
**Immunohistochemistry: Lamin B1 Antibody - Azide and BSA Free [Lamin B1]** - Immunohistochemistry analysis of paraffin-embedded Rat brain using Lamin B1 Rabbit pAb at dilution of 1:150 (40x lens). High pressure antigen retrieval performed with 0.01M Citrate Bufferr (pH 6.0) prior to IHC staining.



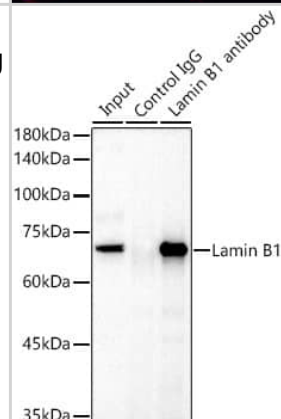
**Immunohistochemistry: Lamin B1 Antibody - Azide and BSA Free [Lamin B1]** - Immunohistochemistry analysis of paraffin-embedded Mouse kidney using Lamin B1 Rabbit pAb at dilution of 1:150 (40x lens). High pressure antigen retrieval performed with 0.01M Citrate Buffer (pH 6.0) prior to IHC staining.



**Immunocytochemistry/ Immunofluorescence: Lamin B1 Antibody - Azide and BSA Free [Lamin B1]** - Immunofluorescence analysis of PC-12 cells using Lamin B1 Rabbit pAb at dilution of 1:100 (40x lens). Secondary antibody: Cy3-conjugated Goat anti-Rabbit IgG (H+L) at 1:500 dilution. Blue: DAPI for nuclear staining.



**Immunoprecipitation: Lamin B1 Antibody - Azide and BSA Free [Lamin B1]** - Immunoprecipitation analysis of 300 ug extracts of HeLa cells using 3 ug Lamin B1 antibody . Western blot was performed from the immunoprecipitate using Lamin B1 antibody at a dilution of 1:1000.



**Western Blot: Lamin B1 Antibody - Azide and BSA Free [Lamin B1]** - Western blot analysis of various lysates using Lamin B1 Rabbit pAb at 1:1000 dilution.

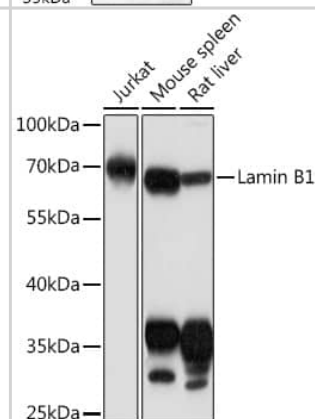
Secondary antibody: HRP-conjugated Goat anti-Rabbit IgG (H+L) at 1:10000 dilution.

Lysates/proteins: 25ug per lane.

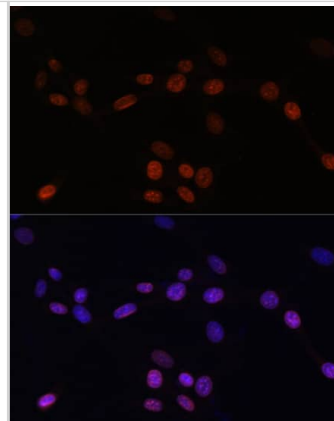
Blocking buffer: 3% nonfat dry milk in TBST.

Detection: ECL Basic Kit .

Exposure time: 1min.



Immunocytochemistry/ Immunofluorescence: Lamin B1 Antibody - Azide and BSA Free [Lamin B1] - Immunofluorescence analysis of NIH/3T3 cells using Lamin B1 Rabbit pAb at dilution of 1:100. Secondary antibody: Cy3-conjugated Goat anti-Rabbit IgG (H+L) at 1:500 dilution. Blue: DAPI for nuclear staining.





### Novus Biologicals USA

10730 E. Briarwood Avenue  
Centennial, CO 80112  
USA  
Phone: 303.730.1950  
Toll Free: 1.888.506.6887  
Fax: 303.730.1966  
nb-customerservice@bio-techne.com

### Bio-Techne Canada

21 Canmotor Ave  
Toronto, ON M8Z 4E6  
Canada  
Phone: 905.827.6400  
Toll Free: 855.668.8722  
Fax: 905.827.6402  
canada.inquires@bio-techne.com

### Bio-Techne Ltd

19 Barton Lane  
Abingdon Science Park  
Abingdon, OX14 3NB, United Kingdom  
Phone: (44) (0) 1235 529449  
Free Phone: 0800 37 34 15  
Fax: (44) (0) 1235 533420  
info.EMEA@bio-techne.com

### General Contact Information

www.novusbio.com  
Technical Support: nb-technical@bio-techne.com  
Orders: nb-customerservice@bio-techne.com  
General: novus@novusbio.com

### Products Related to NBP3-03711-100ul

---

NBP2-33376H	Blue Marker Antibody (6F4-F6) [HRP]
HAF008	Goat anti-Rabbit IgG Secondary Antibody [HRP]
NB7160	Goat anti-Rabbit IgG (H+L) Secondary Antibody [HRP]
NBP2-24891	Rabbit IgG Isotype Control

---

### Limitations

This product is for research use only and is not approved for use in humans or in clinical diagnosis. Primary Antibodies are guaranteed for 1 year from date of receipt.

For more information on our 100% guarantee, please visit [www.novusbio.com/guarantee](http://www.novusbio.com/guarantee)

Earn gift cards/discounts by submitting a review: [www.novusbio.com/reviews/submit/NBP3-03711](http://www.novusbio.com/reviews/submit/NBP3-03711)

Earn gift cards/discounts by submitting a publication using this product:  
[www.novusbio.com/publications](http://www.novusbio.com/publications)

