

# Product Datasheet

## Sodium Potassium ATPase Alpha 1 Antibody - BSA Free NBP2-95255-0.1ml

Unit Size: 0.1 ml

Store at -20C. Avoid freeze-thaw cycles.

[www.novusbio.com](http://www.novusbio.com)



[technical@novusbio.com](mailto:technical@novusbio.com)

Protocols, Publications, Related Products, Reviews, Research Tools and Images at:  
[www.novusbio.com/NBP2-95255](http://www.novusbio.com/NBP2-95255)

Updated 9/9/2025 v.20.1

Earn rewards for product  
reviews and publications.

Submit a publication at [www.novusbio.com/publications](http://www.novusbio.com/publications)

Submit a review at [www.novusbio.com/reviews/destination/NBP2-95255](http://www.novusbio.com/reviews/destination/NBP2-95255)



**NBP2-95255-0.1ml**

Sodium Potassium ATPase Alpha 1 Antibody - BSA Free

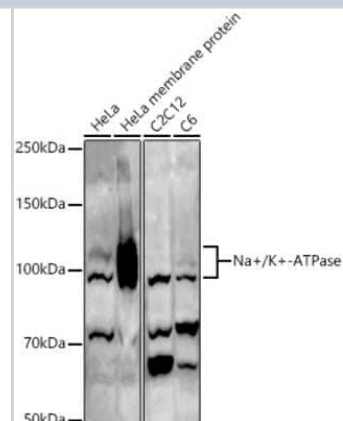
Product Information	
Unit Size	0.1 ml
Concentration	Please see the vial label for concentration. If unlisted please contact technical services.
Storage	Store at -20C. Avoid freeze-thaw cycles.
Clonality	Polyclonal
Preservative	0.02% Sodium Azide
Isotype	IgG
Purity	Affinity purified
Buffer	PBS (pH 7.3), 50% glycerol
Target Molecular Weight	113 kDa

Product Description	
Description	Novus Biologicals Rabbit Sodium Potassium ATPase Alpha 1 Antibody - BSA Free (NBP2-95255) is a polyclonal antibody validated for use in IHC, WB, ELISA and ICC/IF. All Novus Biologicals antibodies are covered by our 100% guarantee.
Host	Rabbit
Gene ID	476
Gene Symbol	ATP1A1
Species	Human, Mouse, Rat
Immunogen	Recombinant fusion protein containing a sequence corresponding to amino acids 1-100 of human Sodium Potassium ATPase Alpha 1 (NP_000692.2). MGKGVGRDKYEPAAVSEQQGDKKGGKGGKDRDMDDELKKEVSMDDHKLSLDEL HRKYGTDLRGLTSARAAEILARDGPNALTPPPTTPEWIKFCRQLFGGF

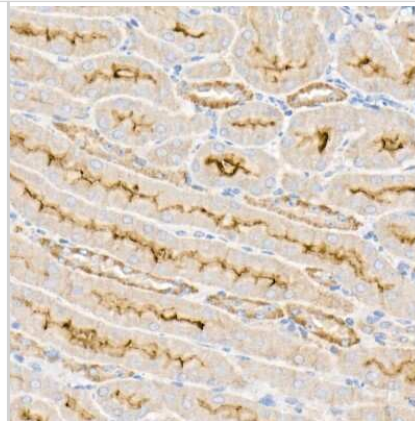
Product Application Details	
Applications	Western Blot, Immunohistochemistry-Paraffin, ELISA, Immunocytochemistry/Immunofluorescence, Immunohistochemistry
Recommended Dilutions	Western Blot 1:100 - 1:500, ELISA Recommended starting concentration is 1 µg/mL. Please optimize the concentration based on your specific assay requirements., Immunohistochemistry 1:50 - 1:200, Immunocytochemistry/Immunofluorescence 1:50 - 1:200, Immunohistochemistry-Paraffin

**Images**

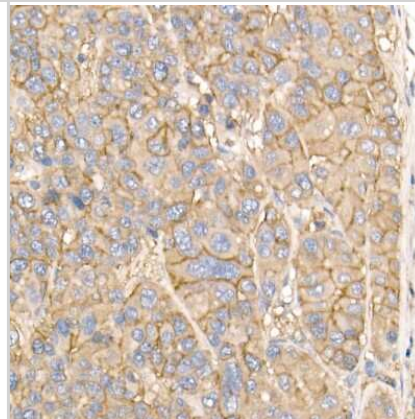
Western Blot: Sodium Potassium ATPase Alpha 1 Antibody [NBP2-95255] - Western blot analysis of extracts of various cell lines, using Sodium Potassium ATPase Alpha 1 antibody (NBP2-95255) at 1:500 dilution. Secondary antibody: HRP Goat Anti-Rabbit IgG (H+L) at 1:10000 dilution. Lysates/proteins: 25ug per lane. Blocking buffer: 3% nonfat dry milk in TBST. Detection: ECL Basic Kit. Exposure time: 180s.



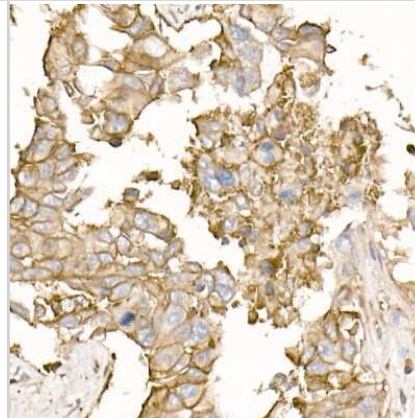
**Immunohistochemistry-Paraffin: Sodium Potassium ATPase Alpha 1 Antibody [NBP2-95255]** - Immunohistochemistry of paraffin-embedded mouse kidney using Sodium Potassium ATPase Alpha 1 Rabbit pAb (NBP2-95255) at dilution of 1:50 (40x lens). Perform high pressure antigen retrieval with 10 mM citrate buffer pH 6.0 before commencing with IHC staining protocol.



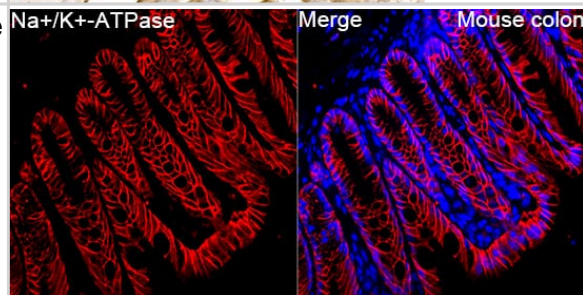
**Immunohistochemistry-Paraffin: Sodium Potassium ATPase Alpha 1 Antibody [NBP2-95255]** - Immunohistochemistry of paraffin-embedded human liver cancer using Sodium Potassium ATPase Alpha 1 Rabbit pAb (NBP2-95255) at dilution of 1:50 (40x lens). Perform high pressure antigen retrieval with 10 mM citrate buffer pH 6.0 before commencing with IHC staining protocol.



**Immunohistochemistry-Paraffin: Sodium Potassium ATPase Alpha 1 Antibody [NBP2-95255]** - Immunohistochemistry of paraffin-embedded human lung cancer using Sodium Potassium ATPase Alpha 1 Rabbit pAb (NBP2-95255) at dilution of 1:50 (40x lens). Perform high pressure antigen retrieval with 10 mM citrate buffer pH 6.0 before commencing with IHC staining protocol.



**Immunocytochemistry/ Immunofluorescence: Sodium Potassium ATPase Alpha 1 Antibody - Azide and BSA Free [Sodium Potassium ATPase Alpha 1]** - Immunofluorescence analysis of paraffin-embedded Mouse colon tissue using Sodium Potassium ATPase Alpha 1 Rabbit pAb at a dilution of 1:200 (40x lens). Secondary antibody: Cy3-conjugated Goat anti-Rabbit IgG (H+L) at 1:500 dilution. Blue: DAPI for nuclear staining. Perform high pressure antigen retrieval with 0.01 M citrate buffer (pH 6.0) prior to IF staining.





### **Novus Biologicals USA**

10730 E. Briarwood Avenue  
Centennial, CO 80112  
USA  
Phone: 303.730.1950  
Toll Free: 1.888.506.6887  
Fax: 303.730.1966  
nb-customerservice@bio-techne.com

### **Bio-Techne Canada**

21 Canmotor Ave  
Toronto, ON M8Z 4E6  
Canada  
Phone: 905.827.6400  
Toll Free: 855.668.8722  
Fax: 905.827.6402  
canada.inquires@bio-techne.com

### **Bio-Techne Ltd**

19 Barton Lane  
Abingdon Science Park  
Abingdon, OX14 3NB, United Kingdom  
Phone: (44) (0) 1235 529449  
Free Phone: 0800 37 34 15  
Fax: (44) (0) 1235 533420  
info.EMEA@bio-techne.com

### **General Contact Information**

www.novusbio.com  
Technical Support: nb-technical@bio-techne.com  
Orders: nb-customerservice@bio-techne.com  
General: novus@novusbio.com

### **Products Related to NBP2-95255-0.1ml**

---

NBP2-33376H	Blue Marker Antibody (6F4-F6) [HRP]
HAF008	Goat anti-Rabbit IgG Secondary Antibody [HRP]
NB7160	Goat anti-Rabbit IgG (H+L) Secondary Antibody [HRP]
NBP2-24891	Rabbit IgG Isotype Control

---

### **Limitations**

This product is for research use only and is not approved for use in humans or in clinical diagnosis. Primary Antibodies are guaranteed for 1 year from date of receipt.

For more information on our 100% guarantee, please visit [www.novusbio.com/guarantee](http://www.novusbio.com/guarantee)

Earn gift cards/discounts by submitting a review: [www.novusbio.com/reviews/submit/NBP2-95255](http://www.novusbio.com/reviews/submit/NBP2-95255)

Earn gift cards/discounts by submitting a publication using this product:  
[www.novusbio.com/publications](http://www.novusbio.com/publications)

