

# Product Datasheet

## PSMA/FOLH1/NAALADase I Antibody (CL9091) - BSA Free NBP2-88925

Unit Size: 100 ul

Store at 4C short term. Aliquot and store at -20C long term. Avoid freeze-thaw cycles.

[www.novusbio.com](http://www.novusbio.com)



[technical@novusbio.com](mailto:technical@novusbio.com)

Protocols, Publications, Related Products, Reviews, Research Tools and Images at:  
[www.novusbio.com/NBP2-88925](http://www.novusbio.com/NBP2-88925)

Updated 12/2/2025 v.20.1

Earn rewards for product  
reviews and publications.

Submit a publication at [www.novusbio.com/publications](http://www.novusbio.com/publications)

Submit a review at [www.novusbio.com/reviews/destination/NBP2-88925](http://www.novusbio.com/reviews/destination/NBP2-88925)



**NBP2-88925****PSMA/FOLH1/NAALADase I Antibody (CL9091) - BSA Free**

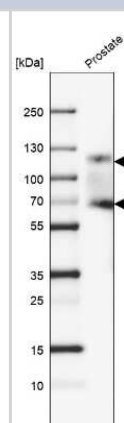
| Product Information |  |
|---------------------|--|
| Unit Size           | 100 ul   |
| Concentration       | Concentrations vary lot to lot. See vial label for concentration. If unlisted please contact technical services. |
| Storage             | Store at 4C short term. Aliquot and store at -20C long term. Avoid freeze-thaw cycles.                           |
| Clonality           | Monoclonal   |
| Clone               | CL9091   |
| Preservative        | 0.02% Sodium Azide   |
| Isotype             | IgG1   |
| Purity              | Protein A purified   |
| Buffer              | PBS (pH 7.2) and 40% Glycerol  |

| Product Description |  |
|---------------------|--|
| Description         | Novus Biologicals Mouse PSMA/FOLH1/NAALADase I Antibody (CL9091) - BSA Free (NBP2-88925) is a monoclonal antibody validated for use in IHC and WB. All Novus Biologicals antibodies are covered by our 100% guarantee. |
| Host                | Mouse  |
| Gene ID             | 2346   |
| Gene Symbol         | FOLH1  |
| Species             | Human  |
| Reactivity Notes    | Immunogen displays the following percentage of sequence identity for non-tested species: Mouse (86%)   |
| Immunogen           | This antibody was developed using a recombinant protein derived from Q04609, with the exact immunogen sequence remaining proprietary.  |

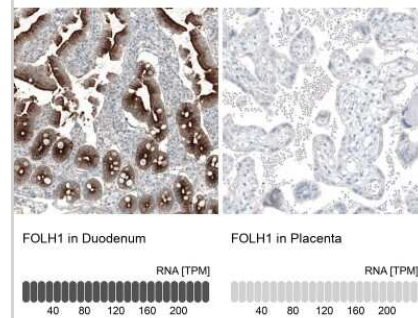
| Product Application Details |   |
|-----------------------------|---|
| Applications                | Western Blot, Immunohistochemistry-Paraffin, Immunohistochemistry                                     |
| Recommended Dilutions       | Western Blot 1 ug/ml, Immunohistochemistry 1:200 - 1:500, Immunohistochemistry-Paraffin 1:200 - 1:500 |
| Application Notes           | For IHC-Paraffin, HIER pH 6 retrieval is recommended.   |

**Images**

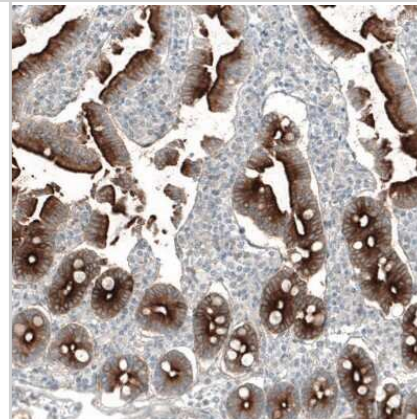
Western Blot: PSMA/FOLH1/NAALADase I Antibody (CL9091) [NBP2-88925] - Analysis in human prostate tissue.



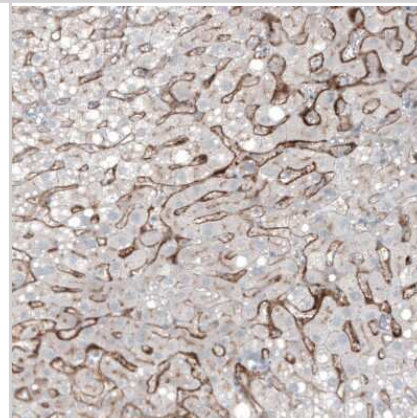
Immunohistochemistry-Paraffin: PSMA/FOLH1/NAALADase I Antibody (CL9091) [NBP2-88925] - Analysis in human duodenum and placenta tissues using NBP2-88925 antibody. Corresponding FOLH1 RNA-seq data are presented for the same tissues.



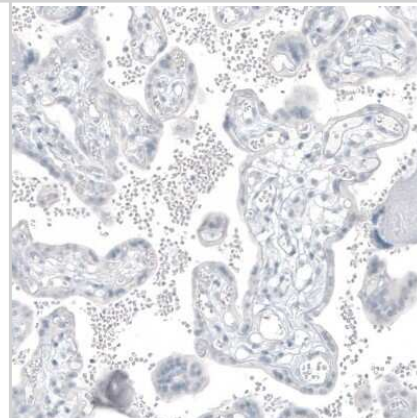
Immunohistochemistry-Paraffin: PSMA/FOLH1/NAALADase I Antibody (CL9091) [NBP2-88925] - Staining of human duodenum shows strong membranous positivity in glandular cells.



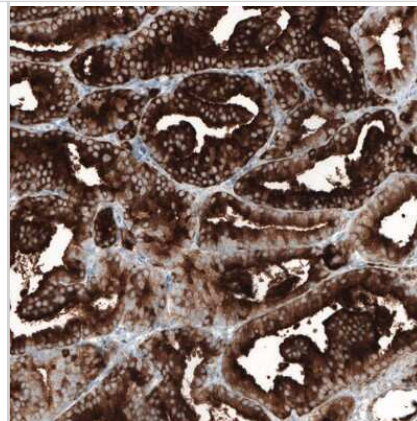
Immunohistochemistry-Paraffin: PSMA/FOLH1/NAALADase I Antibody (CL9091) [NBP2-88925] - Staining of human liver shows moderate membranous positivity in hepatocytes.



Immunohistochemistry-Paraffin: PSMA/FOLH1/NAALADase I Antibody (CL9091) [NBP2-88925] - Staining of human placenta shows no positivity in trophoblastic cells as expected.



Immunohistochemistry-Paraffin: PSMA/FOLH1/NAALADase I Antibody (CL9091) [NBP2-88925] - Staining of human prostate cancer shows strong cytoplasmic positivity in glandular cells.





### **Novus Biologicals USA**

10730 E. Briarwood Avenue  
Centennial, CO 80112  
USA  
Phone: 303.730.1950  
Toll Free: 1.888.506.6887  
Fax: 303.730.1966  
nb-customerservice@bio-techne.com

### **Bio-Techne Canada**

21 Canmotor Ave  
Toronto, ON M8Z 4E6  
Canada  
Phone: 905.827.6400  
Toll Free: 855.668.8722  
Fax: 905.827.6402  
canada.inquires@bio-techne.com

### **Bio-Techne Ltd**

19 Barton Lane  
Abingdon Science Park  
Abingdon, OX14 3NB, United Kingdom  
Phone: (44) (0) 1235 529449  
Free Phone: 0800 37 34 15  
Fax: (44) (0) 1235 533420  
info.EMEA@bio-techne.com

### **General Contact Information**

www.novusbio.com  
Technical Support: nb-technical@bio-techne.com  
Orders: nb-customerservice@bio-techne.com  
General: novus@novusbio.com

### **Products Related to NBP2-88925**

---

|                  |  |
|------------------|--|
| NBP2-33376H      | Blue Marker Antibody (6F4-F6) [HRP]                |
| HAF007           | Goat anti-Mouse IgG Secondary Antibody [HRP]       |
| NB7539           | Goat anti-Mouse IgG (H+L) Secondary Antibody [HRP] |
| NBP1-97005-0.5mg | Mouse IgG1 Isotype Control (MG1)                   |

---

### **Limitations**

This product is for research use only and is not approved for use in humans or in clinical diagnosis. Primary Antibodies are guaranteed for 1 year from date of receipt.

For more information on our 100% guarantee, please visit [www.novusbio.com/guarantee](http://www.novusbio.com/guarantee)

Earn gift cards/discounts by submitting a review: [www.novusbio.com/reviews/submit/NBP2-88925](http://www.novusbio.com/reviews/submit/NBP2-88925)

Earn gift cards/discounts by submitting a publication using this product:  
[www.novusbio.com/publications](http://www.novusbio.com/publications)

