

Product Datasheet

Maxi Potassium channel alpha Antibody - BSA Free NBP2-87781

Unit Size: 100 ul

Store at 4C short term. Aliquot and store at -20C long term. Avoid freeze-thaw cycles.

www.novusbio.com



technical@novusbio.com

Protocols, Publications, Related Products, Reviews, Research Tools and Images at:
www.novusbio.com/NBP2-87781

Updated 9/9/2025 v.20.1

Earn rewards for product
reviews and publications.

Submit a publication at www.novusbio.com/publications

Submit a review at www.novusbio.com/reviews/destination/NBP2-87781



NBP2-87781

Maxi Potassium channel alpha Antibody - BSA Free

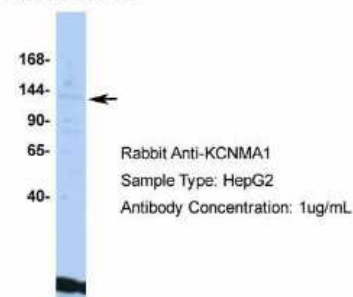
Product Information	
Unit Size	100 ul
Concentration	0.5 mg/ml
Storage	Store at 4C short term. Aliquot and store at -20C long term. Avoid freeze-thaw cycles.
Clonality	Polyclonal
Preservative	0.09% Sodium Azide
Purity	Affinity purified
Buffer	PBS, 2% Sucrose

Product Description	
Description	Novus Biologicals Rabbit Maxi Potassium channel alpha Antibody - BSA Free (NBP2-87781) is a polyclonal antibody validated for use in IHC and WB. All Novus Biologicals antibodies are covered by our 100% guarantee.
Host	Rabbit
Gene ID	3778
Gene Symbol	KCNMA1
Species	Human
Immunogen	The immunogen is a synthetic peptide directed towards the C-terminal region of human Maxi Potassium channel alpha. Peptide sequence: CFGIYRLRDAHLSTPSQCTKRYVITNPPYEFELVPTDLIFCLMQFDHNAG The peptide sequence for this immunogen was taken from within the described region.

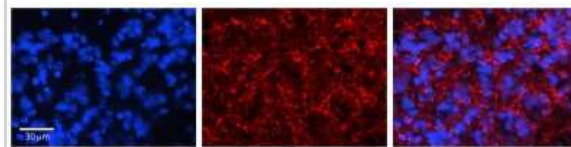
Product Application Details	
Applications	Western Blot, Immunohistochemistry-Paraffin, Immunohistochemistry
Recommended Dilutions	Western Blot 1.0 ug/ml, Immunohistochemistry, Immunohistochemistry-Paraffin

Images

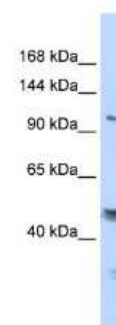
Western Blot: Maxi Potassium channel alpha Antibody [NBP2-87781] - Host: Rabbit. Target Name: KCNMA1. Sample Type: HepG2. Antibody Dilution: 1.0ug/ml

KCNMA1

Immunohistochemistry-Paraffin: Maxi Potassium channel alpha Antibody [NBP2-87781] - KCNMA1 antibody - C-terminal. Formalin Fixed Paraffin Embedded Tissue: Human Pineal Tissue. Observed Staining: Cytoplasm in Human Pineal Tissue. Primary Antibody Concentration: 1:600.

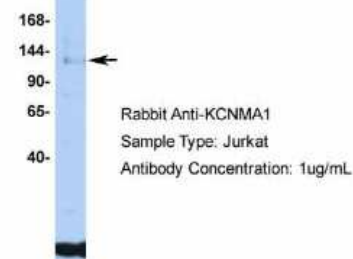


Western Blot: Maxi Potassium channel alpha Antibody [NBP2-87781] - WB Suggested Anti-KCNMA1 Antibody Titration: 0.2-1 ug/ml. ELISA Titer: 1:312500. Positive Control: Human Liver

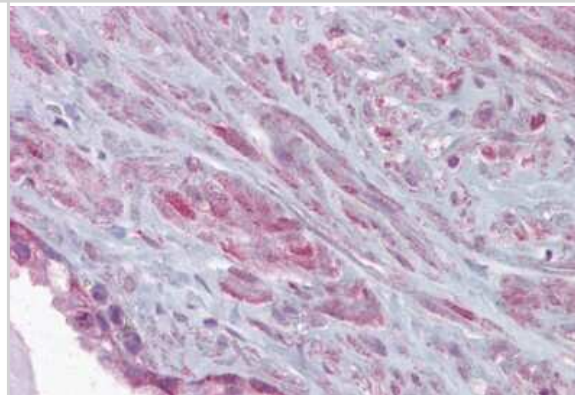


Western Blot: Maxi Potassium channel alpha Antibody [NBP2-87781] - Host: Rabbit. Target Name: KCNMA1. Sample Type: Jurkat. Antibody Dilution: 1.0ug/ml

KCNMA1



Immunohistochemistry: Maxi Potassium channel alpha Antibody [NBP2-87781] - Prostate





Novus Biologicals USA

10730 E. Briarwood Avenue
Centennial, CO 80112
USA
Phone: 303.730.1950
Toll Free: 1.888.506.6887
Fax: 303.730.1966
nb-customerservice@bio-techne.com

Bio-Techne Canada

21 Canmotor Ave
Toronto, ON M8Z 4E6
Canada
Phone: 905.827.6400
Toll Free: 855.668.8722
Fax: 905.827.6402
canada.inquires@bio-techne.com

Bio-Techne Ltd

19 Barton Lane
Abingdon Science Park
Abingdon, OX14 3NB, United Kingdom
Phone: (44) (0) 1235 529449
Free Phone: 0800 37 34 15
Fax: (44) (0) 1235 533420
info.EMEA@bio-techne.com

General Contact Information

www.novusbio.com
Technical Support: nb-technical@bio-techne.com
Orders: nb-customerservice@bio-techne.com
General: novus@novusbio.com

Products Related to NBP2-87781

NBP2-33376H	Blue Marker Antibody (6F4-F6) [HRP]
HAF008	Goat anti-Rabbit IgG Secondary Antibody [HRP]
NB7160	Goat anti-Rabbit IgG (H+L) Secondary Antibody [HRP]
NBP2-33726PEP	Maxi Potassium channel alpha Recombinant Protein Antigen

Limitations

This product is for research use only and is not approved for use in humans or in clinical diagnosis. Primary Antibodies are guaranteed for 1 year from date of receipt.

For more information on our 100% guarantee, please visit www.novusbio.com/guarantee

Earn gift cards/discounts by submitting a review: www.novusbio.com/reviews/submit/NBP2-87781

Earn gift cards/discounts by submitting a publication using this product:
www.novusbio.com/publications

