

Product Datasheet

CREB3L2 Antibody - BSA Free NBP2-87208

Unit Size: 100 ul

Store at 4C short term. Aliquot and store at -20C long term. Avoid freeze-thaw cycles.

www.novusbio.com



technical@novusbio.com

Protocols, Publications, Related Products, Reviews, Research Tools and Images at:
www.novusbio.com/NBP2-87208

Updated 9/9/2025 v.20.1

Earn rewards for product
reviews and publications.

Submit a publication at www.novusbio.com/publications

Submit a review at www.novusbio.com/reviews/destination/NBP2-87208



NBP2-87208

CREB3L2 Antibody - BSA Free

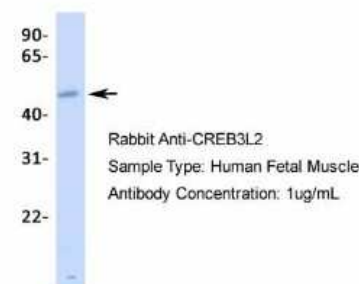
Product Information	
Unit Size	100 ul
Concentration	1 mg/ml
Storage	Store at 4C short term. Aliquot and store at -20C long term. Avoid freeze-thaw cycles.
Clonality	Polyclonal
Preservative	0.09% Sodium Azide
Purity	Protein A purified
Buffer	PBS, 2% Sucrose

Product Description	
Description	Novus Biologicals Rabbit CREB3L2 Antibody - BSA Free (NBP2-87208) is a polyclonal antibody validated for use in IHC and WB. All Novus Biologicals antibodies are covered by our 100% guarantee.
Host	Rabbit
Gene ID	64764
Gene Symbol	CREB3L2
Species	Human
Immunogen	The immunogen is a synthetic peptide directed towards the N-terminal region of human CREB3L2. Peptide sequence: HSYSLCEEPRQAQSPFTHITSDSFNDDEVESEKWYLSTDF The peptide sequence for this immunogen was taken from within the described region.

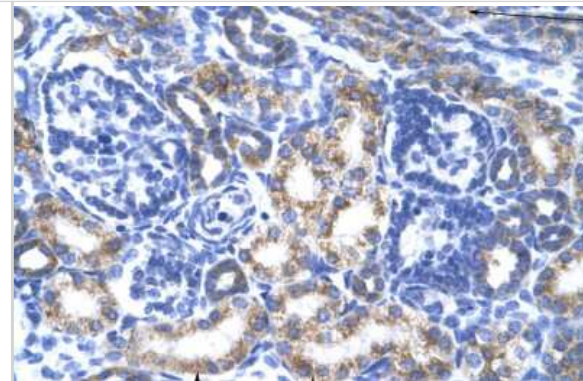
Product Application Details	
Applications	Western Blot, Immunohistochemistry-Paraffin, Immunohistochemistry
Recommended Dilutions	Western Blot 1.0 ug/ml, Immunohistochemistry, Immunohistochemistry-Paraffin

Images

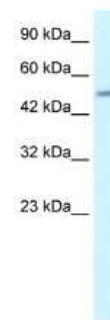
Western Blot: CREB3L2 Antibody [NBP2-87208] - Host: Rabbit. Target Name: CREB3L2. Sample Type: Human Fetal Muscle. Antibody Dilution: 1.0ug/ml

CREB3L2

Immunohistochemistry: CREB3L2 Antibody [NBP2-87208] - Human kidney



Western Blot: CREB3L2 Antibody [NBP2-87208] - WB Suggested Anti-CREB3L2 Antibody Titration: 1.25ug/ml. ELISA Titer: 1:12500. Positive Control: Jurkat cell lysate

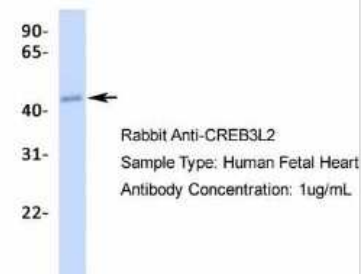


Western Blot: CREB3L2 Antibody [NBP2-87208] - Host: Rabbit. Target Name: CREB3L2. Sample Type: Human Fetal Brain. Antibody Dilution: 1.0ug/ml



Western Blot: CREB3L2 Antibody [NBP2-87208] - Host: Rabbit. Target Name: CREB3L2. Sample Type: Human Fetal Heart. Antibody Dilution: 1.0ug/ml

CREB3L2





Novus Biologicals USA

10730 E. Briarwood Avenue
Centennial, CO 80112
USA
Phone: 303.730.1950
Toll Free: 1.888.506.6887
Fax: 303.730.1966
nb-customerservice@bio-techne.com

Bio-Techne Canada

21 Canmotor Ave
Toronto, ON M8Z 4E6
Canada
Phone: 905.827.6400
Toll Free: 855.668.8722
Fax: 905.827.6402
canada.inquires@bio-techne.com

Bio-Techne Ltd

19 Barton Lane
Abingdon Science Park
Abingdon, OX14 3NB, United Kingdom
Phone: (44) (0) 1235 529449
Free Phone: 0800 37 34 15
Fax: (44) (0) 1235 533420
info.EMEA@bio-techne.com

General Contact Information

www.novusbio.com
Technical Support: nb-technical@bio-techne.com
Orders: nb-customerservice@bio-techne.com
General: novus@novusbio.com

Products Related to NBP2-87208

NBP2-33376H	Blue Marker Antibody (6F4-F6) [HRP]
HAF008	Goat anti-Rabbit IgG Secondary Antibody [HRP]
NB7160	Goat anti-Rabbit IgG (H+L) Secondary Antibody [HRP]
NBP2-51927-0.02mg	Recombinant Human CREB3L2 His Protein

Limitations

This product is for research use only and is not approved for use in humans or in clinical diagnosis. Primary Antibodies are guaranteed for 1 year from date of receipt.

For more information on our 100% guarantee, please visit www.novusbio.com/guarantee

Earn gift cards/discounts by submitting a review: www.novusbio.com/reviews/submit/NBP2-87208

Earn gift cards/discounts by submitting a publication using this product:
www.novusbio.com/publications

