

Product Datasheet

HES7 Antibody - BSA Free NBP2-85042-0.1ml

Unit Size: 0.1ml

Store at 4C short term. Aliquot and store at -20C long term. Avoid freeze-thaw cycles.

www.novusbio.com



technical@novusbio.com

Protocols, Publications, Related Products, Reviews, Research Tools and Images at:
www.novusbio.com/NBP2-85042

Updated 9/9/2025 v.20.1

Earn rewards for product
reviews and publications.

Submit a publication at www.novusbio.com/publications

Submit a review at www.novusbio.com/reviews/destination/NBP2-85042



NBP2-85042-0.1ml

HES7 Antibody - BSA Free

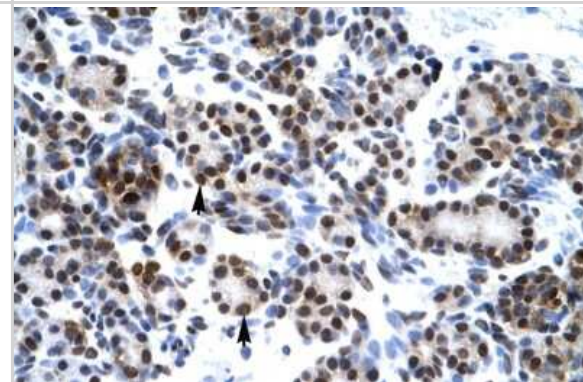
Product Information	
Unit Size	0.1ml
Concentration	0.5 mg/ml
Storage	Store at 4C short term. Aliquot and store at -20C long term. Avoid freeze-thaw cycles.
Clonality	Polyclonal
Preservative	0.09% Sodium Azide
Purity	Affinity purified
Buffer	PBS, 2% Sucrose
Product Description	
Description	Novus Biologicals Rabbit HES7 Antibody - BSA Free (NBP2-85042) is a polyclonal antibody validated for use in IHC and WB. All Novus Biologicals antibodies are covered by our 100% guarantee.
Host	Rabbit
Gene ID	84667
Gene Symbol	HES7
Species	Human
Immunogen	The immunogen is a synthetic peptide directed towards the middle region of human HES7. Peptide sequence: VGYLRERSRVEPPGVPRSPVQDAKALASCYLSGFRECLLRLLAAIAHDASP The peptide sequence for this immunogen was taken from within the described region.
Product Application Details	
Applications	Western Blot, Immunohistochemistry-Paraffin, Immunohistochemistry
Recommended Dilutions	Western Blot 1.0 ug/ml, Immunohistochemistry, Immunohistochemistry-Paraffin

Images

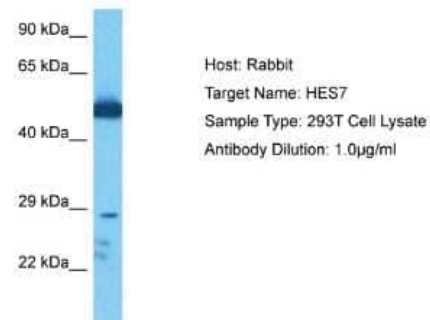
Western Blot: HES7 Antibody [NBP2-85042] - WB Suggested Anti-HES7 Antibody Titration: 0.2-1 ug/ml. ELISA Titer: 1:312500. Positive Control: Human heart



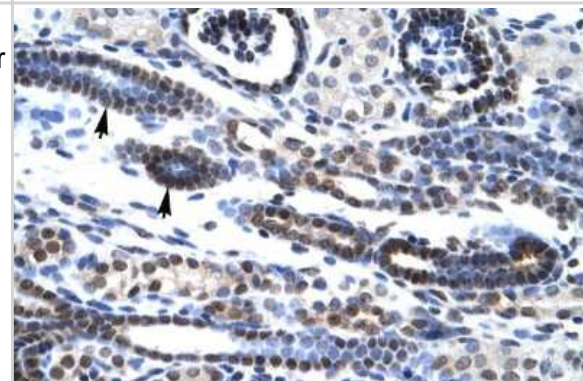
Immunohistochemistry-Paraffin: HES7 Antibody [NBP2-85042] - Rabbit Anti-HES7 Antibody. Paraffin Embedded Tissue: Human Pancreas. Cellular Data: Epithelial cells of pancreatic acinus. Antibody Concentration: 4.0-8.0 ug/ml. Magnification: 400X



Western Blot: HES7 Antibody [NBP2-85042] - Host: Rabbit. Target Name: HES7. Sample Tissue: Human 293T Whole Cell. Antibody Dilution: 1ug/ml



Immunohistochemistry-Paraffin: HES7 Antibody [NBP2-85042] - Rabbit Anti-HES7 Antibody. Paraffin Embedded Tissue: Human Kidney. Cellular Data: Epithelial cells of renal tubule. Antibody Concentration: 4.0-8.0 ug/ml. Magnification: 400X





Novus Biologicals USA

10730 E. Briarwood Avenue
Centennial, CO 80112
USA
Phone: 303.730.1950
Toll Free: 1.888.506.6887
Fax: 303.730.1966
nb-customerservice@bio-techne.com

Bio-Techne Canada

21 Canmotor Ave
Toronto, ON M8Z 4E6
Canada
Phone: 905.827.6400
Toll Free: 855.668.8722
Fax: 905.827.6402
canada.inquires@bio-techne.com

Bio-Techne Ltd

19 Barton Lane
Abingdon Science Park
Abingdon, OX14 3NB, United Kingdom
Phone: (44) (0) 1235 529449
Free Phone: 0800 37 34 15
Fax: (44) (0) 1235 533420
info.EMEA@bio-techne.com

General Contact Information

www.novusbio.com
Technical Support: nb-technical@bio-techne.com
Orders: nb-customerservice@bio-techne.com
General: novus@novusbio.com

Products Related to NBP2-85042-0.1ml

NBP2-33376H	Blue Marker Antibody (6F4-F6) [HRP]
HAF008	Goat anti-Rabbit IgG Secondary Antibody [HRP]
NB7160	Goat anti-Rabbit IgG (H+L) Secondary Antibody [HRP]
NBP2-23100	Recombinant Human HES7 His Protein

Limitations

This product is for research use only and is not approved for use in humans or in clinical diagnosis. Primary Antibodies are guaranteed for 1 year from date of receipt.

For more information on our 100% guarantee, please visit www.novusbio.com/guarantee

Earn gift cards/discounts by submitting a review: www.novusbio.com/reviews/submit/NBP2-85042

Earn gift cards/discounts by submitting a publication using this product:
www.novusbio.com/publications

