

Product Datasheet

GPM6A Antibody - BSA Free

NBP2-85000-0.1ml

Unit Size: 0.1 ml

Store at 4C short term. Aliquot and store at -20C long term. Avoid freeze-thaw cycles.

www.novusbio.com



technical@novusbio.com

Protocols, Publications, Related Products, Reviews, Research Tools and Images at:
www.novusbio.com/NBP2-85000

Updated 9/9/2025 v.20.1

Earn rewards for product
reviews and publications.

Submit a publication at www.novusbio.com/publications

Submit a review at www.novusbio.com/reviews/destination/NBP2-85000



NBP2-85000-0.1ml

GPM6A Antibody - BSA Free

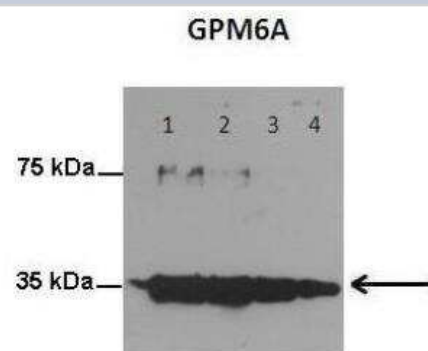
Product Information	
Unit Size	0.1 ml
Concentration	0.5 mg/ml
Storage	Store at 4C short term. Aliquot and store at -20C long term. Avoid freeze-thaw cycles.
Clonality	Polyclonal
Preservative	0.09% Sodium Azide
Purity	Affinity purified
Buffer	PBS, 2% Sucrose

Product Description	
Description	Novus Biologicals Rabbit GPM6A Antibody - BSA Free (NBP2-85000) is a polyclonal antibody validated for use in IHC and WB. All Novus Biologicals antibodies are covered by our 100% guarantee.
Host	Rabbit
Gene ID	2823
Gene Symbol	GPM6A
Species	Human, Rat
Immunogen	The immunogen is a synthetic peptide directed towards the C-terminal region of GPM6A. Peptide sequence: IAMVHYLMVLSANWAYVKDACRMQKYEDIKSKEEQELHDIHSTRSKERLN The peptide sequence for this immunogen was taken from within the described region.

Product Application Details	
Applications	Western Blot, Immunohistochemistry-Paraffin, Immunohistochemistry
Recommended Dilutions	Western Blot 1.0 ug/ml, Immunohistochemistry, Immunohistochemistry-Paraffin

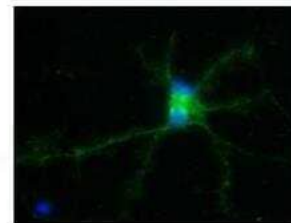
Images

Western Blot: GPM6A Antibody [NBP2-85000] - Lanes: Lane1: 250ug rat hippocampal culture neurons. Lane2: 200ug rat hippocampal culture neurons. Lane3: 100ug rat hippocampal culture neurons. Lane4: 50ug rat hippocampal culture neurons. Primary Antibody Dilution: 1:1000. Secondary Antibody: Anti-rabbit HRP. Secondary Antibody Dilution: 1:8000. Gene Name: GPM6A. Submitted by: Anonymous.



Immunohistochemistry: GPM6A Antibody [NBP2-85000] - Primary Antibody Dilution: 1:250. Secondary Antibody: Anti-rabbit-AlexaFluor 488. Secondary Antibody Dilution: 1:1000. Color/Signal Descriptions: GPM6A: Green DAPI: Blue. Gene Name: GPM6A. Submitted by: Anonymous

GPM6A



Green: GPM6A
Blue: DAPI

Western Blot: GPM6A Antibody [NBP2-85000] - Host: Rabbit. Target Name: GPM6A. Antibody Dilution: 1.0ug/ml. Sample Type: Human brain

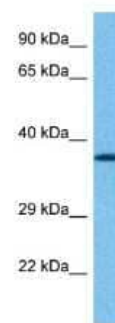


Western Blot: GPM6A Antibody [NBP2-85000] - Host: Rabbit. Target: GPM6A. Positive control (+): Human Liver (LI). Negative control (-): Human Stomach Tumor (T-ST). Antibody concentration: 3ug/ml



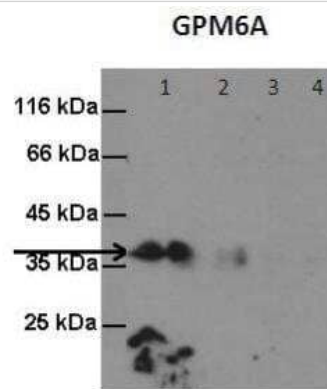
Host: Rabbit
Target name: GPM6A
Positive control: ~25ug Human Liver (LI)
Negative control: ~25ug Human Stomach Tumor (T-ST)
Antibody concentration: 3ug/ml

Western Blot: GPM6A Antibody [NBP2-85000] - Host: Rabbit. Target Name: GPM6A. Sample Tissue: Human Brain. Antibody Dilution: 1ug/ml

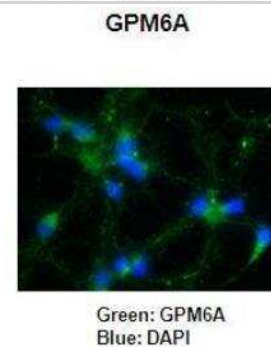


Host: Rabbit
Target Name: GPM6A
Sample Type: Human Brain Lysate
Antibody Dilution: 1.0µg/ml

Western Blot: GPM6A Antibody [NBP2-85000] - Lanes: Lane1: 400ug rat hippocampal. Lane2: 300ug rat hippocampal. Lane3: 200ug rat hippocampal. Lane4: 100ug rat hippocampal. Primary Antibody Dilution: 1:1000. Secondary Antibody: Anti-rabbit HRP. Secondary Antibody Dilution: 1:8000. Gene Name: GPM6A. Submitted by: Anonymous.



Immunohistochemistry: GPM6A Antibody [NBP2-85000] - Primary Antibody Dilution: 1:250. Secondary Antibody: Anti-rabbit-AlexaFluor 488. Secondary Antibody Dilution: 1:1000. Color/Signal Descriptions: GPM6A: Green DAPI: Blue. Gene Name: GPM6A. Submitted by: Anonymous





Novus Biologicals USA

10730 E. Briarwood Avenue
Centennial, CO 80112
USA
Phone: 303.730.1950
Toll Free: 1.888.506.6887
Fax: 303.730.1966
nb-customerservice@bio-techne.com

Bio-Techne Canada

21 Canmotor Ave
Toronto, ON M8Z 4E6
Canada
Phone: 905.827.6400
Toll Free: 855.668.8722
Fax: 905.827.6402
canada.inquires@bio-techne.com

Bio-Techne Ltd

19 Barton Lane
Abingdon Science Park
Abingdon, OX14 3NB, United Kingdom
Phone: (44) (0) 1235 529449
Free Phone: 0800 37 34 15
Fax: (44) (0) 1235 533420
info.EMEA@bio-techne.com

General Contact Information

www.novusbio.com
Technical Support: nb-technical@bio-techne.com
Orders: nb-customerservice@bio-techne.com
General: novus@novusbio.com

Products Related to NBP2-85000-0.1ml

NBP2-33376H	Blue Marker Antibody (6F4-F6) [HRP]
HAF008	Goat anti-Rabbit IgG Secondary Antibody [HRP]
NB7160	Goat anti-Rabbit IgG (H+L) Secondary Antibody [HRP]
NBP1-81799PEP	GPM6A Recombinant Protein Antigen

Limitations

This product is for research use only and is not approved for use in humans or in clinical diagnosis. Primary Antibodies are guaranteed for 1 year from date of receipt.

For more information on our 100% guarantee, please visit www.novusbio.com/guarantee

Earn gift cards/discounts by submitting a review: www.novusbio.com/reviews/submit/NBP2-85000

Earn gift cards/discounts by submitting a publication using this product:
www.novusbio.com/publications

