

# Product Datasheet

## Lysine (K)-specific Demethylase 6B/KDM6B/JMJD3 Antibody - BSA Free NBP2-82107

Unit Size: 0.1 mg

Store at 4C short term. Aliquot and store at -20C long term. Avoid freeze-thaw cycles.

[www.novusbio.com](http://www.novusbio.com)



[technical@novusbio.com](mailto:technical@novusbio.com)

Protocols, Publications, Related Products, Reviews, Research Tools and Images at:  
[www.novusbio.com/NBP2-82107](http://www.novusbio.com/NBP2-82107)

Updated 3/4/2026 v.20.1

Earn rewards for product  
reviews and publications.

Submit a publication at [www.novusbio.com/publications](http://www.novusbio.com/publications)

Submit a review at [www.novusbio.com/reviews/destination/NBP2-82107](http://www.novusbio.com/reviews/destination/NBP2-82107)



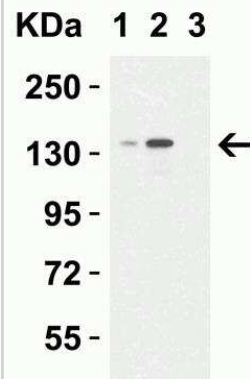
**NBP2-82107**

Lysine (K)-specific Demethylase 6B/KDM6B/JMJD3 Antibody - BSA Free

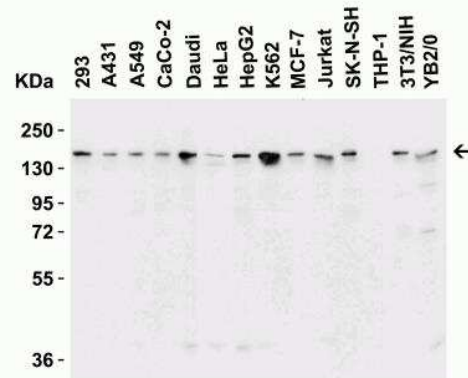
<b>Product Information</b>	
<b>Unit Size</b>	0.1 mg
<b>Concentration</b>	1 mg/ml
<b>Storage</b>	Store at 4C short term. Aliquot and store at -20C long term. Avoid freeze-thaw cycles.
<b>Clonality</b>	Polyclonal
<b>Preservative</b>	0.02% Sodium Azide
<b>Isotype</b>	IgG
<b>Purity</b>	Peptide affinity purified
<b>Buffer</b>	PBS
<b>Target Molecular Weight</b>	180 kDa
<b>Product Description</b>	
<b>Host</b>	Rabbit
<b>Gene ID</b>	23135
<b>Gene Symbol</b>	KDM6B
<b>Species</b>	Human, Mouse, Rat
<b>Specificity/Sensitivity</b>	This antibody is specific for Lysine (K)-specific Demethylase 6B/KDM6B/JMJD3 and will not recognize other JMJD proteins. Human Lysine (K)-specific Demethylase 6B/KDM6B/JMJD3 has 2 isoforms, including isoform 1 (1682aa, 181kD) and isoform 2 (1643aa, 177kD). Mouse Lysine (K)-specific Demethylase 6B/KDM6B/JMJD3 has one isoform (1641aa, 176kD) and rat Lysine (K)-specific Demethylase 6B/KDM6B/JMJD3 also has one isoform (1356aa, 146kD). NBP2-82107 can detect human, mouse and rat.
<b>Immunogen</b>	Antibody was raised against a peptide corresponding to 16 amino acids near the carboxy terminus of human Lysine (K)-specific Demethylase 6B/KDM6B/JMJD3. The immunogen is located within amino acids 1370-1420 of Lysine (K)-specific Demethylase 6B/KDM6B/JMJD3. Amino Acid Sequence: KVPGRSRTPGHQENNNF
<b>Product Application Details</b>	
<b>Applications</b>	Western Blot, ELISA, Immunocytochemistry/ Immunofluorescence, Immunocytochemistry
<b>Recommended Dilutions</b>	Western Blot 0.25-4 ug/mL, ELISA, Immunocytochemistry/ Immunofluorescence 2.5-20 ug/mL, Immunocytochemistry 2.5 ug/mL

## Images

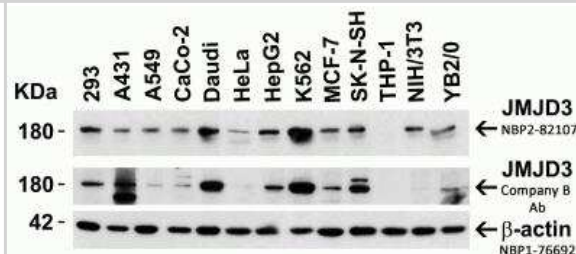
Western Blot: Lysine (K)-specific Demethylase 6B/KDM6B/JMJD3 Antibody [NBP2-82107] - Western Blot Validation in HepG2 Cell Lysate. Loading: 15 ug of lysates per lane. Antibodies: Lysine (K)-specific Demethylase 6B/KDM6B/JMJD3, NBP2-82107, 1h incubation at RT in 5% NFDm/TBST. Secondary: Goat anti-rabbit IgG HRP conjugate at 1:10000 dilution. Lane 1: 0.25 ug/mL Lane 2: 0.5 ug/mL Lane 3: 0.25 ug/mL with blocking peptide



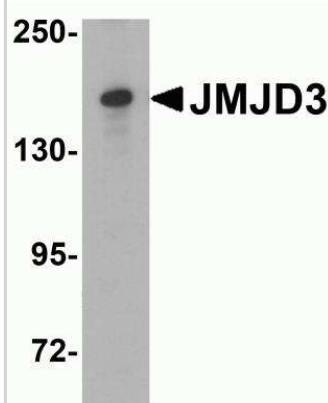
Western Blot: Lysine (K)-specific Demethylase 6B/KDM6B/JMJD3 Antibody [NBP2-82107] - Western Blot Validation in Human, Mouse, and Rat Cell Lines. Loading: 15 ug of lysates per lane. Antibodies: Lysine (K)-specific Demethylase 6B/KDM6B/JMJD3 [NBP2-82107], (1 ug/ml), 1h incubation at RT in 5% NFDm/TBST. Secondary: Goat anti-rabbit IgG HRP conjugate at 1:10000 dilution.



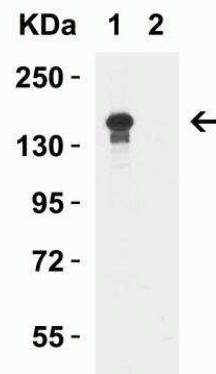
Western Blot: Lysine (K)-specific Demethylase 6B/KDM6B/JMJD3 Antibody [NBP2-82107] - Independent Antibody Validation (IAV) via Protein Expression Profile in Cell Lines. Loading: 15 ug of lysates per lane. Antibodies: Lysine (K)-specific Demethylase 6B/KDM6B/JMJD3 NBP2-82107 (1 ug/mL), JMJD3 from Company B, (2 ug/mL) and beta-actin NBP1-76692 (1 ug/mL), 1h incubation at RT in 5% NFDm/TBST. Secondary: Goat anti-rabbit IgG HRP conjugate at 1:10000 dilution.



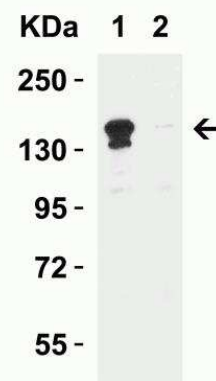
Western Blot: Lysine (K)-specific Demethylase 6B/KDM6B/JMJD3 Antibody [NBP2-82107] - Western Blot Validation in HeLa Cell Lysate. Loading: 15 ug of lysates per lane. Antibodies: Lysine (K)-specific Demethylase 6B/KDM6B/JMJD3, NBP2-82107 (0.25 ug/mL), 1h incubation at RT in 5% NFDm/TBST. Secondary: Goat anti-rabbit IgG HRP conjugate at 1:10000 dilution.



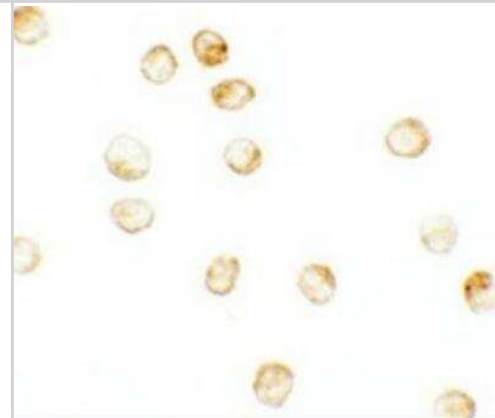
Western Blot: Lysine (K)-specific Demethylase 6B/KDM6B/JMJD3 Antibody [NBP2-82107] - Western Blot Validation in K562 Cell Lysate. Loading: 15 ug of lysates per lane. Antibodies: Lysine (K)-specific Demethylase 6B/KDM6B/JMJD3, NBP2-82107 (0.5 ug/mL) , 1h incubation at RT in 5% NFDM/TBST. Secondary: Goat anti-rabbit IgG HRP conjugate at 1:10000 dilution. Lane 1: in the absence and Lane 2: in the presence of blocking peptide.



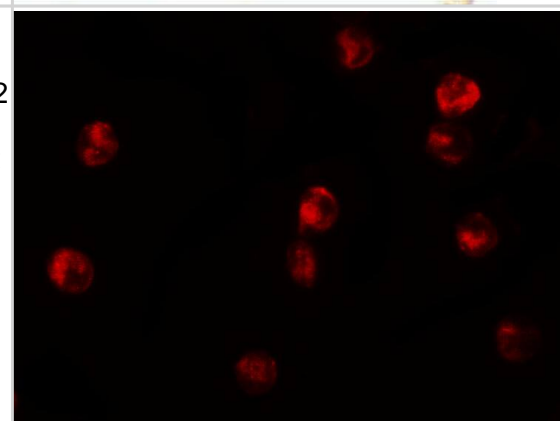
Western Blot: Lysine (K)-specific Demethylase 6B/KDM6B/JMJD3 Antibody [NBP2-82107] - Western Blot Validation in Mouse A-20 Cell Lysate. Loading: 15 ug of lysates per lane. Antibodies: Lysine (K)-specific Demethylase 6B/KDM6B/JMJD3, NBP2-82107 (0.5 ug/mL) , 1h incubation at RT in 5% NFDM/TBST. Secondary: Goat anti-rabbit IgG HRP conjugate at 1:10000 dilution. Lane 1: in the absence and Lane 2: in the presence of blocking peptide



Immunocytochemistry/Immunofluorescence: Lysine (K)-specific Demethylase 6B/KDM6B/JMJD3 Antibody [NBP2-82107] - Immunocytochemistry Validation of JMJD3 in K562 Cells. Immunocytochemical analysis of K562 cells using Lysine (K)-specific Demethylase 6B/KDM6B/JMJD3 antibody (NBP2-82107) at 2.5 ug/ml. Cells were fixed with formaldehyde and blocked with 10% serum for 1 h at RT; antigen retrieval was by heat mediation with a citrate buffer (pH6). Samples were incubated with primary antibody overnight at 4C. A goat anti-rabbit IgG H&L (HRP) at 1/250 was used as secondary. Counter stained with Hematoxylin.



Immunocytochemistry/ Immunofluorescence: Lysine (K)-specific Demethylase 6B/KDM6B/JMJD3 Antibody - BSA Free [NBP2-82107] - Validation of Lysine (K)-specific Demethylase 6B/KDM6B/JMJD3 in K562 Cells. Immunofluorescent analysis of 4% paraformaldehyde-fixed K562 cells labeling Lysine (K)-specific Demethylase 6B/KDM6B/JMJD3 with at 20 ug/mL, followed by goat anti-rabbit IgG secondary antibody at 1/500 dilution (red).





### Novus Biologicals USA

10730 E. Briarwood Avenue  
Centennial, CO 80112  
USA  
Phone: 303.730.1950  
Toll Free: 1.888.506.6887  
Fax: 303.730.1966  
nb-customerservice@bio-techne.com

### Bio-Techne Canada

21 Canmotor Ave  
Toronto, ON M8Z 4E6  
Canada  
Phone: 905.827.6400  
Toll Free: 855.668.8722  
Fax: 905.827.6402  
canada.inquires@bio-techne.com

### Bio-Techne Ltd

19 Barton Lane  
Abingdon Science Park  
Abingdon, OX14 3NB, United Kingdom  
Phone: (44) (0) 1235 529449  
Free Phone: 0800 37 34 15  
Fax: (44) (0) 1235 533420  
info.EMEA@bio-techne.com

### General Contact Information

www.novusbio.com  
Technical Support: nb-technical@bio-techne.com  
Orders: nb-customerservice@bio-techne.com  
General: novus@novusbio.com

### Products Related to NBP2-82107

---

HAF008	Goat anti-Rabbit IgG Secondary Antibody [HRP]
NB7160	Goat anti-Rabbit IgG (H+L) Secondary Antibody [HRP]
NBP2-24891	Rabbit IgG Isotype Control
NBP1-06640PEP	Lysine (K)-specific Demethylase 6B/KDM6B/JMJD3 Antibody Blocking Peptide

---

### Limitations

This product is for research use only and is not approved for use in humans or in clinical diagnosis. Primary Antibodies are guaranteed for 1 year from date of receipt.

For more information on our 100% guarantee, please visit [www.novusbio.com/guarantee](http://www.novusbio.com/guarantee)

Earn gift cards/discounts by submitting a review: [www.novusbio.com/reviews/submit/NBP2-82107](http://www.novusbio.com/reviews/submit/NBP2-82107)

Earn gift cards/discounts by submitting a publication using this product:  
[www.novusbio.com/publications](http://www.novusbio.com/publications)

