

Product Datasheet

ZFYVE21 Antibody - BSA Free NBP2-82050

Unit Size: 0.1 mg

Store at 4C short term. Aliquot and store at -20C long term. Avoid freeze-thaw cycles.

www.novusbio.com



technical@novusbio.com

Protocols, Publications, Related Products, Reviews, Research Tools and Images at:
www.novusbio.com/NBP2-82050

Updated 3/4/2026 v.20.1

Earn rewards for product
reviews and publications.

Submit a publication at www.novusbio.com/publications

Submit a review at www.novusbio.com/reviews/destination/NBP2-82050



NBP2-82050

ZFYVE21 Antibody - BSA Free

| Product Information | |
|---------------------|--|
| Unit Size | 0.1 mg |
| Concentration | 1 mg/ml |
| Storage | Store at 4C short term. Aliquot and store at -20C long term. Avoid freeze-thaw cycles. |
| Clonality | Polyclonal |
| Preservative | 0.02% Sodium Azide |
| Isotype | IgG |
| Purity | Peptide affinity purified |
| Buffer | PBS |

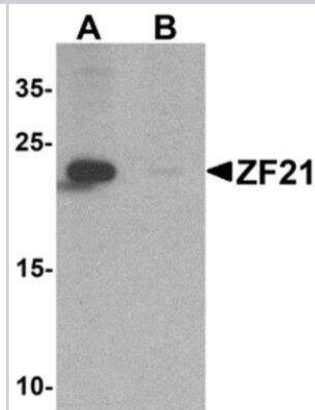
| Product Description | |
|-------------------------|---|
| Host | Rabbit |
| Gene ID | 79038 |
| Gene Symbol | ZFYVE21 |
| Species | Human, Mouse, Rat |
| Specificity/Sensitivity | At least two isoforms of ZFYVE21 are known to exist; this antibody will detect both isoforms. |
| Immunogen | ZFYVE21 antibody was raised against a 15 amino acid synthetic peptide near the amino terminus of human ZFYVE21. The immunogen is located within the first 50 amino acids of ZFYVE21. Amino Acid Sequence: SPFGLEEPQWVPDKE |

| Product Application Details | |
|-----------------------------|---|
| Applications | Western Blot, ELISA, Immunocytochemistry/ Immunofluorescence |
| Recommended Dilutions | Western Blot 1 ug/ml, ELISA, Immunocytochemistry/ Immunofluorescence 20 ug/ml |

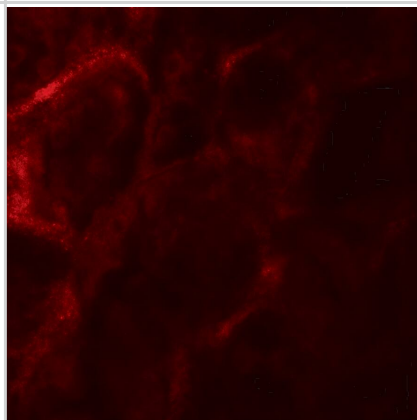


Images

Western Blot: ZFYVE21 Antibody [NBP2-82050] - Western blot analysis of ZFYVE21 in 3T3 cell tissue lysate with ZFYVE21 antibody at 1 ug/ml in (A) the absence and (B) the presence of blocking peptide.



Immunocytochemistry/ Immunofluorescence: ZFYVE21 Antibody - BSA Free [NBP2-82050] - Immunofluorescence of ZFYVE21 in human kidney tissue with ZFYVE21 antibody at 20 ug/mL.





Novus Biologicals USA

10730 E. Briarwood Avenue
Centennial, CO 80112
USA
Phone: 303.730.1950
Toll Free: 1.888.506.6887
Fax: 303.730.1966
nb-customerservice@bio-techne.com

Bio-Techne Canada

21 Canmotor Ave
Toronto, ON M8Z 4E6
Canada
Phone: 905.827.6400
Toll Free: 855.668.8722
Fax: 905.827.6402
canada.inquires@bio-techne.com

Bio-Techne Ltd

19 Barton Lane
Abingdon Science Park
Abingdon, OX14 3NB, United Kingdom
Phone: (44) (0) 1235 529449
Free Phone: 0800 37 34 15
Fax: (44) (0) 1235 533420
info.EMEA@bio-techne.com

General Contact Information

www.novusbio.com
Technical Support: nb-technical@bio-techne.com
Orders: nb-customerservice@bio-techne.com
General: novus@novusbio.com

Products Related to NBP2-82050

| | |
|--------------------|---|
| HAF008 | Goat anti-Rabbit IgG Secondary Antibody [HRP] |
| NB7160 | Goat anti-Rabbit IgG (H+L) Secondary Antibody [HRP] |
| NBP2-24891 | Rabbit IgG Isotype Control |
| H00079038-P01-10ug | Recombinant Human ZFYVE21 GST (N-Term) Protein |

Limitations

This product is for research use only and is not approved for use in humans or in clinical diagnosis. Primary Antibodies are guaranteed for 1 year from date of receipt.

For more information on our 100% guarantee, please visit www.novusbio.com/guarantee

Earn gift cards/discounts by submitting a review: www.novusbio.com/reviews/submit/NBP2-82050

Earn gift cards/discounts by submitting a publication using this product:
www.novusbio.com/publications

