

# Product Datasheet

## Birch pollen Bet V1 Antibody (BV16) - Chimeric - Azide and BSA Free NBP2-81093-0.2mg

Unit Size: 0.2 mg

Store at 4C for up to 3 months. For longer storage, aliquot and store at -20C.

[www.novusbio.com](http://www.novusbio.com)



[technical@novusbio.com](mailto:technical@novusbio.com)

Protocols, Publications, Related Products, Reviews, Research Tools and Images at:  
[www.novusbio.com/NBP2-81093](http://www.novusbio.com/NBP2-81093)

Updated 9/9/2025 v.20.1

Earn rewards for product  
reviews and publications.

Submit a publication at [www.novusbio.com/publications](http://www.novusbio.com/publications)

Submit a review at [www.novusbio.com/reviews/destination/NBP2-81093](http://www.novusbio.com/reviews/destination/NBP2-81093)



**NBP2-81093-0.2mg**

Birch pollen Bet V1 Antibody (BV16) - Chimeric - Azide and BSA Free

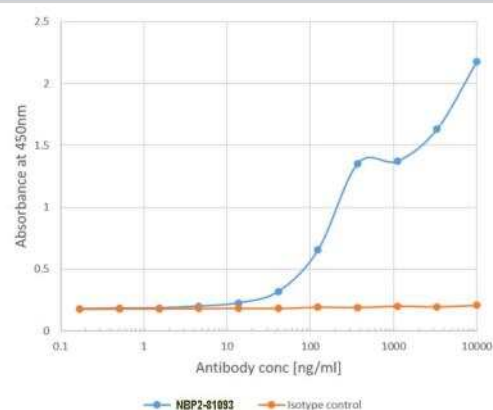
Product Information	
Unit Size	0.2 mg
Concentration	1 mg/ml
Storage	Store at 4C for up to 3 months. For longer storage, aliquot and store at -20C.
Clonality	Monoclonal
Clone	BV16
Preservative	0.02% Proclin 300
Isotype	IgG Kappa
Purity	Protein A purified
Buffer	PBS

Product Description	
Description	Novus Biologicals Rabbit Birch pollen Bet V1 Antibody (BV16) - Chimeric - Azide and BSA Free (NBP2-81093) is a recombinant monoclonal antibody validated for use in WB and ELISA. All Novus Biologicals antibodies are covered by our 100% guarantee.
Host	Rabbit
Species	Plant
Reactivity Notes	Birch ( <i>Betula pendula</i> )
Specificity/Sensitivity	This antibody binds to Birch pollen Bet V1.
Immunogen	Birch pollen Bet V1-A, a major allergen of the European white birch.

Product Application Details	
Applications	Western Blot, ELISA
Recommended Dilutions	Western Blot, ELISA
Application Notes	This chimeric rabbit antibody was made using the variable domain sequences of the original Mouse IgG1 format, for improved compatibility with existing reagents, assays and techniques. This antibody binds to Bet v 1 via an epitope commonly used by allergenic IgE. Fab versions of this antibody have been used in co-crystallization studies of Bet v 1.

**Images**

ELISA: Birch pollen Bet V1 Antibody (BV16) [NBP2-81093] - Binding curve of [NBP2-81093] to Bet v 1. ELISA Plate coated with Bet v 1-A at a concentration of 2 ug/ml. A 3-fold serial dilution from 10,000 to 0.1 ng/ml was performed using NBP2-81093. For detection, a 1:4000 dilution of HRP-labelled goat anti-rabbit antibody was used. Absorbance at 450nm does not reach a plateau but falls slightly before increasing once more. This is suggestive of two binding sites on Bet v 1-A for which NBP2-81093 has differing affinities.





### **Novus Biologicals USA**

10730 E. Briarwood Avenue  
Centennial, CO 80112  
USA  
Phone: 303.730.1950  
Toll Free: 1.888.506.6887  
Fax: 303.730.1966  
nb-customerservice@bio-techne.com

### **Bio-Techne Canada**

21 Canmotor Ave  
Toronto, ON M8Z 4E6  
Canada  
Phone: 905.827.6400  
Toll Free: 855.668.8722  
Fax: 905.827.6402  
canada.inquires@bio-techne.com

### **Bio-Techne Ltd**

19 Barton Lane  
Abingdon Science Park  
Abingdon, OX14 3NB, United Kingdom  
Phone: (44) (0) 1235 529449  
Free Phone: 0800 37 34 15  
Fax: (44) (0) 1235 533420  
info.EMEA@bio-techne.com

### **General Contact Information**

www.novusbio.com  
Technical Support: nb-technical@bio-techne.com  
Orders: nb-customerservice@bio-techne.com  
General: novus@novusbio.com

### **Products Related to NBP2-81093-0.2mg**

---

NBP2-33376H	Blue Marker Antibody (6F4-F6) [HRP]
HAF008	Goat anti-Rabbit IgG Secondary Antibody [HRP]
NB7160	Goat anti-Rabbit IgG (H+L) Secondary Antibody [HRP]

---

### **Limitations**

This product is for research use only and is not approved for use in humans or in clinical diagnosis. Primary Antibodies are guaranteed for 1 year from date of receipt.

For more information on our 100% guarantee, please visit [www.novusbio.com/guarantee](http://www.novusbio.com/guarantee)

Earn gift cards/discounts by submitting a review: [www.novusbio.com/reviews/submit/NBP2-81093](http://www.novusbio.com/reviews/submit/NBP2-81093)

Earn gift cards/discounts by submitting a publication using this product:  
[www.novusbio.com/publications](http://www.novusbio.com/publications)

