

# Product Datasheet

## CD38 Antibody (AT13/5) - Chimeric - Azide and BSA Free NBP2-81055-0.2mg

Unit Size: 0.2 mg

Store at 4C for up to 3 months. For longer storage, aliquot and store at -20C.

[www.novusbio.com](http://www.novusbio.com)



[technical@novusbio.com](mailto:technical@novusbio.com)

Protocols, Publications, Related Products, Reviews, Research Tools and Images at:  
[www.novusbio.com/NBP2-81055](http://www.novusbio.com/NBP2-81055)

Updated 7/28/2024 v.20.1

Earn rewards for product  
reviews and publications.

Submit a publication at [www.novusbio.com/publications](http://www.novusbio.com/publications)

Submit a review at [www.novusbio.com/reviews/destination/NBP2-81055](http://www.novusbio.com/reviews/destination/NBP2-81055)



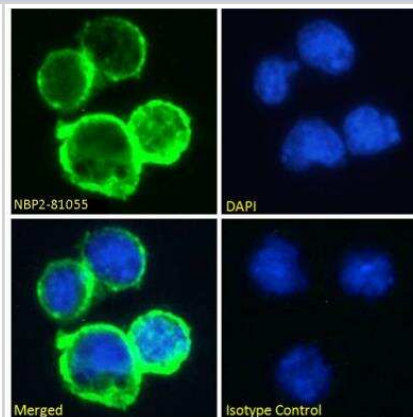
**NBP2-81055-0.2mg**

CD38 Antibody (AT13/5) - Chimeric - Azide and BSA Free

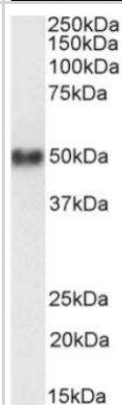
<b>Product Information</b>	
<b>Unit Size</b>	0.2 mg
<b>Concentration</b>	1 mg/ml
<b>Storage</b>	Store at 4C for up to 3 months. For longer storage, aliquot and store at -20C.
<b>Clonality</b>	Monoclonal
<b>Clone</b>	AT13/5
<b>Preservative</b>	0.02% Proclin 300
<b>Isotype</b>	IgG Kappa
<b>Purity</b>	Protein A purified
<b>Buffer</b>	PBS
<b>Product Description</b>	
<b>Description</b>	This chimeric rabbit antibody was made using the variable domain sequences of the original Mouse IgG1 format, for improved compatibility with existing reagents, assays and techniques. The antibody binds to CD38, a glycoprotein on the surface of various immune cells that catalyzes the hydrolysis of cyclic ADP-ribose to NAD <sup>+</sup> and ADP-ribose.
<b>Host</b>	Rabbit
<b>Gene ID</b>	952
<b>Gene Symbol</b>	CD38
<b>Species</b>	Human
<b>Specificity/Sensitivity</b>	Binds specifically to human CD38, an approximately 45 kDa type II transmembrane protein, expressed on essentially all pre-B lymphocytes, plasma cells, and thymocytes. Also present on activated T lymphocytes, natural killer (NK) lymphocytes, myeloblasts, and erythroblasts. Bimodally expressed during B cell development, modulating from high in immature cells to low in intermediate ones and back to high on mature B cells. This antibody competes with clone HB7 (Ellis 1995) which has been shown to bind to an epitope between amino acids 273-285.
<b>Immunogen</b>	Namalwa cells emulsified in CFA
<b>Product Application Details</b>	
<b>Applications</b>	Western Blot, Flow Cytometry, Immunocytochemistry/ Immunofluorescence
<b>Recommended Dilutions</b>	Western Blot, Flow Cytometry, Immunocytochemistry/ Immunofluorescence

## Images

**Immunocytochemistry/Immunofluorescence: CD38 Antibody (AT13/5) [NBP2-81055]** - Immunofluorescence staining of fixed Daudi cells with anti-CD38 antibody AT13/5 [NBP2-81055]. Immunofluorescence analysis of paraformaldehyde fixed Daudi cells on Shi-fix coverslips, permeabilized with 0.15% Triton and stained with the chimeric rabbit IgG version of AT13/5 [NBP2-81055] at 10 ug/mL for 1h followed by Alexa Fluor 488 secondary antibody (1 ug/mL), showing membrane staining. The nuclear stain is DAPI (blue). Panels show from left-right, top-bottom NBP2-81055, DAPI, merged channels and an isotype control. The isotype control was stained with an anti-Fluorescein antibody followed by Alexa Fluor 488 secondary antibody.



**Western Blot: CD38 Antibody (AT13/5) [NBP2-81055]** - Western Blot using anti-CD38 antibody (AT13/5) [NBP2-81055]. Human spleen lysate samples (35 ug protein in RIPA buffer) were resolved on a 10% SDS PAGE gel and blots probed with the chimeric rabbit version of AT13/5 [NBP2-81055] at 1 ug/mL before detection using an anti-rabbit secondary antibody. A primary incubation of 1h was used and protein was detected by chemiluminescence. The expected running size for CD38 is 34.3 kDa, but this protein is glycosylated at several residues. NBP2-81055 successfully detected CD38 in human spleen lysate.





### **Novus Biologicals USA**

10730 E. Briarwood Avenue  
Centennial, CO 80112  
USA  
Phone: 303.730.1950  
Toll Free: 1.888.506.6887  
Fax: 303.730.1966  
nb-customerservice@bio-techne.com

### **Bio-Techne Canada**

21 Canmotor Ave  
Toronto, ON M8Z 4E6  
Canada  
Phone: 905.827.6400  
Toll Free: 855.668.8722  
Fax: 905.827.6402  
canada.inquires@bio-techne.com

### **Bio-Techne Ltd**

19 Barton Lane  
Abingdon Science Park  
Abingdon, OX14 3NB, United Kingdom  
Phone: (44) (0) 1235 529449  
Free Phone: 0800 37 34 15  
Fax: (44) (0) 1235 533420  
info.EMEA@bio-techne.com

### **General Contact Information**

www.novusbio.com  
Technical Support: nb-technical@bio-techne.com  
Orders: nb-customerservice@bio-techne.com  
General: novus@novusbio.com

### **Products Related to NBP2-81055-0.2mg**

---

NBP2-33376H	Blue Marker Antibody (6F4-F6) [HRP]
HAF008	Goat anti-Rabbit IgG Secondary Antibody [HRP]
NB7160	Goat anti-Rabbit IgG (H+L) Secondary Antibody [HRP]
NBP2-52339-0.05mg	Recombinant Human CD38 His Protein

---

### **Limitations**

This product is for research use only and is not approved for use in humans or in clinical diagnosis. Primary Antibodies are guaranteed for 1 year from date of receipt.

For more information on our 100% guarantee, please visit [www.novusbio.com/guarantee](http://www.novusbio.com/guarantee)

Earn gift cards/discounts by submitting a review: [www.novusbio.com/reviews/submit/NBP2-81055](http://www.novusbio.com/reviews/submit/NBP2-81055)

Earn gift cards/discounts by submitting a publication using this product:  
[www.novusbio.com/publications](http://www.novusbio.com/publications)

