

Product Datasheet

Insulin R/CD220 Antibody (83-14) - Chimeric - Azide and BSA Free NBP2-81038-0.2mg

Unit Size: 0.2 mg

Store at 4C for up to 3 months. For longer storage, aliquot and store at -20C.

www.novusbio.com



technical@novusbio.com

Protocols, Publications, Related Products, Reviews, Research Tools and Images at:
www.novusbio.com/NBP2-81038

Updated 9/9/2025 v.20.1

Earn rewards for product
reviews and publications.

Submit a publication at www.novusbio.com/publications

Submit a review at www.novusbio.com/reviews/destination/NBP2-81038



NBP2-81038-0.2mg

Insulin R/CD220 Antibody (83-14) - Chimeric - Azide and BSA Free

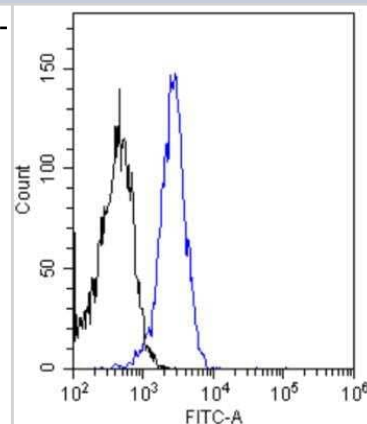
Product Information	
Unit Size	0.2 mg
Concentration	1 mg/ml
Storage	Store at 4C for up to 3 months. For longer storage, aliquot and store at -20C.
Clonality	Monoclonal
Clone	83-14
Preservative	0.02% Proclin 300
Isotype	IgG Kappa
Purity	Protein A purified
Buffer	PBS

Product Description	
Description	Novus Biologicals Rabbit Insulin R/CD220 Antibody (83-14) - Chimeric - Azide and BSA Free (NBP2-81038) is a recombinant monoclonal antibody validated for use in IHC, WB, ELISA, Flow, ICC/IF and IP. All Novus Biologicals antibodies are covered by our 100% guarantee.
Host	Rabbit
Gene ID	3643
Gene Symbol	INSR
Species	Human, Porcine, Bovine, Sheep
Specificity/Sensitivity	Recognises the extracellular domain of the Insulin R/CD220. Amino acids 469 - 592 (exon 7 and 8) of Insulin R/CD220.
Immunogen	This antibody was raised by immunizing mice with IM-9 lymphocytes followed by purified insulin receptor.

Product Application Details	
Applications	Western Blot, ELISA, Flow Cytometry, Immunocytochemistry/ Immunofluorescence, Immunohistochemistry, Immunoprecipitation
Recommended Dilutions	Western Blot, Flow Cytometry, ELISA, Immunohistochemistry, Immunocytochemistry/ Immunofluorescence, Immunoprecipitation
Application Notes	This chimeric rabbit antibody was made using the variable domain sequences of the original murine IgG2a format, for improved compatibility with existing reagents, assays and techniques.

Images

Flow Cytometry: Insulin R/CD220 Antibody (83-14) [NBP2-81038] - Flow-cytometry using the Insulin R/CD220 Antibody (83-14) [NBP2-81038]. Jurkat cells were stained with unimmunized rabbit IgG antibody (black line) or the rabbit-chimeric version of 83-14 (NBP2-81038, blue line) at a concentration of 10 ug/ml for 30 mins at RT. After washing, bound antibody was detected using anti-rabbit IgG JK (FITC-conjugate) antibody at 2 ug/ml and cells analyzed on a FACSCanto flow-cytometer.





Novus Biologicals USA

10730 E. Briarwood Avenue
Centennial, CO 80112
USA
Phone: 303.730.1950
Toll Free: 1.888.506.6887
Fax: 303.730.1966
nb-customerservice@bio-techne.com

Bio-Techne Canada

21 Canmotor Ave
Toronto, ON M8Z 4E6
Canada
Phone: 905.827.6400
Toll Free: 855.668.8722
Fax: 905.827.6402
canada.inquires@bio-techne.com

Bio-Techne Ltd

19 Barton Lane
Abingdon Science Park
Abingdon, OX14 3NB, United Kingdom
Phone: (44) (0) 1235 529449
Free Phone: 0800 37 34 15
Fax: (44) (0) 1235 533420
info.EMEA@bio-techne.com

General Contact Information

www.novusbio.com
Technical Support: nb-technical@bio-techne.com
Orders: nb-customerservice@bio-techne.com
General: novus@novusbio.com

Products Related to NBP2-81038-0.2mg

NBP2-33376H	Blue Marker Antibody (6F4-F6) [HRP]
HAF008	Goat anti-Rabbit IgG Secondary Antibody [HRP]
NB7160	Goat anti-Rabbit IgG (H+L) Secondary Antibody [HRP]
NBP2-14124PEP	Insulin R/CD220 Recombinant Protein Antigen

Limitations

This product is for research use only and is not approved for use in humans or in clinical diagnosis. Primary Antibodies are guaranteed for 1 year from date of receipt.

For more information on our 100% guarantee, please visit www.novusbio.com/guarantee

Earn gift cards/discounts by submitting a review: www.novusbio.com/reviews/submit/NBP2-81038

Earn gift cards/discounts by submitting a publication using this product:
www.novusbio.com/publications

