

Product Datasheet

VEGFR2/KDR/FIk-1 Antibody (2C6) - Azide and BSA Free NBP2-81009

Unit Size: 0.1 mg

Store at 4C short term. Aliquot and store at -20C long term. Avoid freeze-thaw cycles.

www.novusbio.com



technical@novusbio.com

Protocols, Publications, Related Products, Reviews, Research Tools and Images at:
www.novusbio.com/NBP2-81009

Updated 9/9/2025 v.20.1

Earn rewards for product
reviews and publications.

Submit a publication at www.novusbio.com/publications

Submit a review at www.novusbio.com/reviews/destination/NBP2-81009



NBP2-81009**VEGFR2/KDR/FIk-1 Antibody (2C6) - Azide and BSA Free**

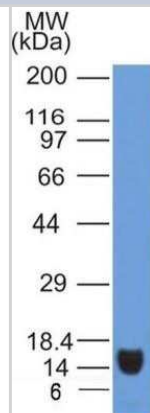
Product Information	
Unit Size	0.1 mg
Concentration	1 mg/ml
Storage	Store at 4C short term. Aliquot and store at -20C long term. Avoid freeze-thaw cycles.
Clonality	Monoclonal
Clone	2C6
Preservative	No Preservative
Isotype	IgG1 Kappa
Purity	Protein G purified
Buffer	PBS

Product Description	
Description	Novus Biologicals Mouse VEGFR2/KDR/FIk-1 Antibody (2C6) - Azide and BSA Free (NBP2-36429) is a monoclonal antibody validated for use in IHC, WB and ICC/IF. All Novus Biologicals antibodies are covered by our 100% guarantee.
Host	Mouse
Gene ID	3791
Gene Symbol	KDR
Species	Human
Immunogen	Partial recombinant human VEGFR2 protein (between amino acids 300-600) [UniProt# P35968].

Product Application Details	
Applications	Western Blot, Immunohistochemistry-Paraffin, Flow (Cell Surface), Immunocytochemistry/ Immunofluorescence, Immunohistochemistry
Recommended Dilutions	Western Blot 1.0 ug/ml, Immunohistochemistry, Immunocytochemistry/ Immunofluorescence 1:50 - 1:100, Immunohistochemistry-Paraffin 5 ug/ml, Flow (Cell Surface)

Images

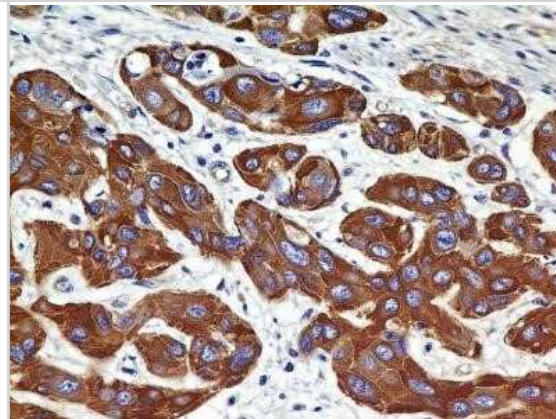
Western Blot: VEGFR2/KDR/FIk-1 Antibody (2C6) - Azide and BSA Free [NBP2-81009] - Analysis of VEGF R2/KDR/FIk-1 (clone 2C6) in partial recombinant protein. Image from the standard format of this antibody.



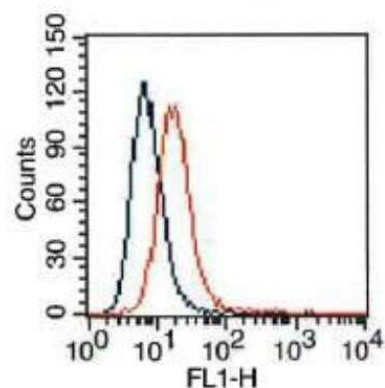
Immunocytochemistry: VEGFR2/KDR/FIk-1 Antibody (2C6) - Azide and BSA Free [NBP2-81009] - Analysis of FFPE tissue section of Human Hepatocellular Carcinoma with antibody at 5 ug/ml concentration. The cancer cells depicted a specific and strong staining in the cytoplasm. Image from the standard format of this antibody.



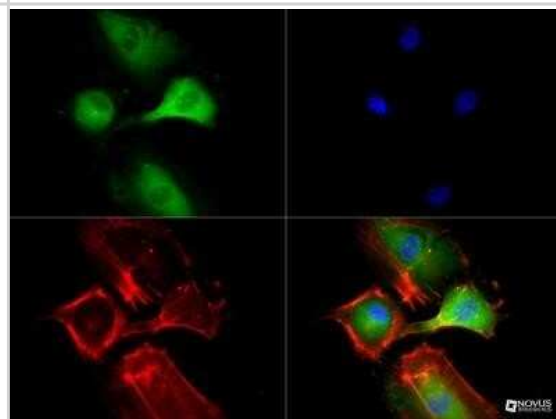
Immunohistochemistry-Paraffin: VEGFR2/KDR/FIk-1 Antibody (2C6) - Azide and BSA Free [NBP2-81009] - Analysis of FFPE tissue section of Human SCC of Esophagus with antibody at 5 ug/ml concentration. The cancer cells depicted a specific and strong staining in the cytoplasm while the tumor stroma was negative for VEGF R2/KDR/FIk-1 immunopositivity. Image f



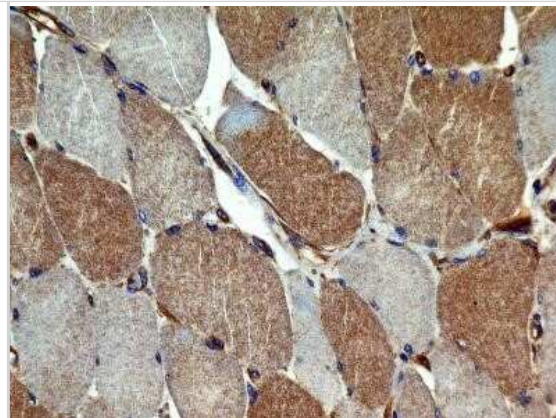
Flow (Cell Surface): VEGFR2/KDR/FIk-1 Antibody (2C6) - Azide and BSA Free [NBP2-81009] - HepG2 cells were stained (surface) with antibody (orange) or isotype control, mouse IgG1 (blue). Positive staining observed using FITC conjugated mouse anti-IgG(H+L) secondary antibody. Live cells (PPI negative) were gated for analysis. Image from the standard format of this antibody.



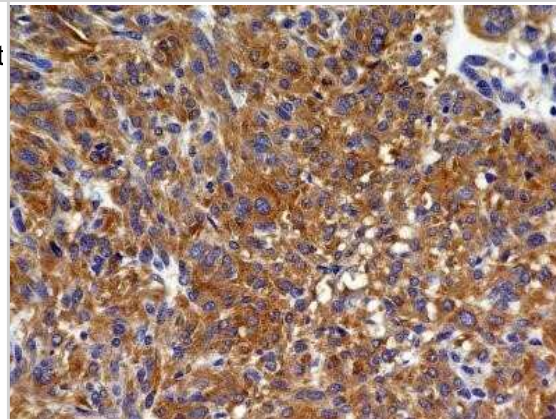
Immunocytochemistry/Immunofluorescence: VEGFR2/KDR/FIk-1 Antibody (2C6) - Azide and BSA Free [NBP2-81009] - Antibody (1:50) was tested in HUVEC cells with DyLight 488 (green). Nuclei and alpha-tubulin were counterstained with DAPI (blue) and DyLight 550 (red). Image from the standard format of this antibody.



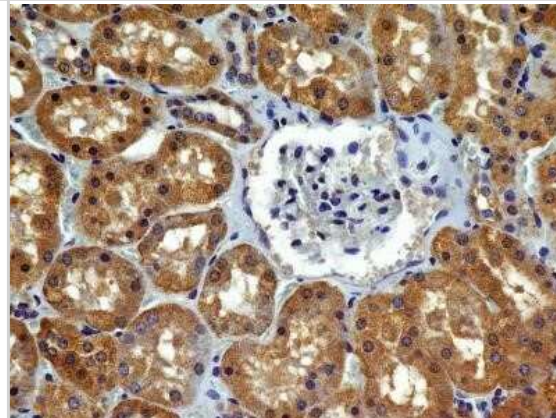
Immunohistochemistry: VEGFR2/KDR/Flk-1 Antibody (2C6) - Azide and BSA Free [NBP2-81009] - Analysis of FFPE transverse section of normal human skeletal muscle with antibody at 5 ug/ml concentration. The myocytes showed a moderate diffused to granular staining in the cytoplasm. Image from the standard format of this antibody.



Immunohistochemistry: VEGFR2/KDR/Flk-1 Antibody (2C6) - Azide and BSA Free [NBP2-81009] - Analysis of FFPE tissue section of a malignant stromal tumor of the human small bowel with antibody at 5 ug/ml concentration. The cancer cells depicted a specific and strong staining in the cytoplasm. Image from the standard format of this antibody.



Immunohistochemistry-Paraffin: VEGFR2/KDR/Flk-1 Antibody (2C6) - Azide and BSA Free [NBP2-81009] - Analysis of FFPE tissue section of human normal kidney with antibody at 5 ug/ml concentration. The cuboidal epithelial cells of various tubules/ducts showed a specific cytoplasmic immunopositivity of VEGF R2/KDR/Flk-1 protein. Image from the standard f





Novus Biologicals USA

10730 E. Briarwood Avenue
Centennial, CO 80112
USA
Phone: 303.730.1950
Toll Free: 1.888.506.6887
Fax: 303.730.1966
nb-customerservice@bio-techne.com

Bio-Techne Canada

21 Canmotor Ave
Toronto, ON M8Z 4E6
Canada
Phone: 905.827.6400
Toll Free: 855.668.8722
Fax: 905.827.6402
canada.inquires@bio-techne.com

Bio-Techne Ltd

19 Barton Lane
Abingdon Science Park
Abingdon, OX14 3NB, United Kingdom
Phone: (44) (0) 1235 529449
Free Phone: 0800 37 34 15
Fax: (44) (0) 1235 533420
info.EMEA@bio-techne.com

General Contact Information

www.novusbio.com
Technical Support: nb-technical@bio-techne.com
Orders: nb-customerservice@bio-techne.com
General: novus@novusbio.com

Products Related to NBP2-81009

NBP2-33376H	Blue Marker Antibody (6F4-F6) [HRP]
HAF007	Goat anti-Mouse IgG Secondary Antibody [HRP]
NB7539	Goat anti-Mouse IgG (H+L) Secondary Antibody [HRP]
NBP1-43319-0.5mg	Mouse IgG1 Kappa Isotype Control (P3.6.2.8.1)

Limitations

This product is for research use only and is not approved for use in humans or in clinical diagnosis. Primary Antibodies are guaranteed for 1 year from date of receipt.

For more information on our 100% guarantee, please visit www.novusbio.com/guarantee

Earn gift cards/discounts by submitting a review: www.novusbio.com/reviews/submit/NBP2-81009

Earn gift cards/discounts by submitting a publication using this product:
www.novusbio.com/publications

