

# Product Datasheet

## VEGFR2/KDR/FIk-1 Antibody (1B6) - Azide and BSA Free NBP2-81008

Unit Size: 0.1 mg

Store at 4C short term. Aliquot and store at -20C long term. Avoid freeze-thaw cycles.

[www.novusbio.com](http://www.novusbio.com)



[technical@novusbio.com](mailto:technical@novusbio.com)

Protocols, Publications, Related Products, Reviews, Research Tools and Images at:  
[www.novusbio.com/NBP2-81008](http://www.novusbio.com/NBP2-81008)

Updated 9/9/2025 v.20.1

Earn rewards for product  
reviews and publications.

Submit a publication at [www.novusbio.com/publications](http://www.novusbio.com/publications)

Submit a review at [www.novusbio.com/reviews/destination/NBP2-81008](http://www.novusbio.com/reviews/destination/NBP2-81008)



**NBP2-81008****VEGFR2/KDR/FIk-1 Antibody (1B6) - Azide and BSA Free**

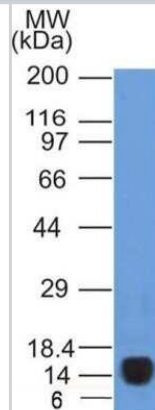
<b>Product Information</b>	
<b>Unit Size</b>	0.1 mg
<b>Concentration</b>	1 mg/ml
<b>Storage</b>	Store at 4C short term. Aliquot and store at -20C long term. Avoid freeze-thaw cycles.
<b>Clonality</b>	Monoclonal
<b>Clone</b>	1B6
<b>Preservative</b>	No Preservative
<b>Isotype</b>	IgG1 Kappa
<b>Purity</b>	Protein G purified
<b>Buffer</b>	PBS

<b>Product Description</b>	
<b>Description</b>	Novus Biologicals Mouse VEGFR2/KDR/FIk-1 Antibody (1B6) - Azide and BSA Free (NBP2-36428) is a monoclonal antibody validated for use in IHC, WB, Flow and ICC/IF. All Novus Biologicals antibodies are covered by our 100% guarantee.
<b>Host</b>	Mouse
<b>Gene ID</b>	3791
<b>Gene Symbol</b>	KDR
<b>Species</b>	Human
<b>Immunogen</b>	Partial recombinant human VEGFR2 protein (between amino acids 300-600) [Uniprot: P35968]

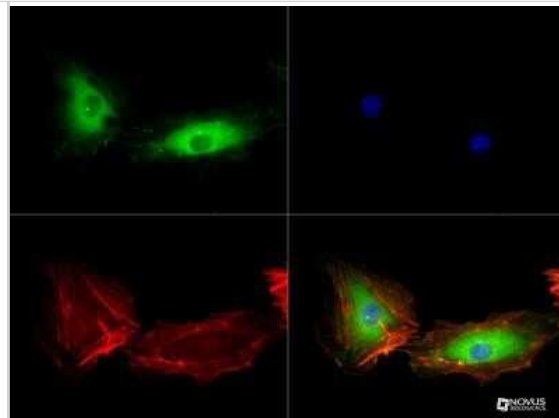
<b>Product Application Details</b>	
<b>Applications</b>	Western Blot, Immunohistochemistry-Paraffin, Flow Cytometry, Flow (Cell Surface), Immunocytochemistry/ Immunofluorescence, Immunohistochemistry, CyTOF-ready
<b>Recommended Dilutions</b>	Western Blot 1 ug/ml, Flow Cytometry, Immunohistochemistry, Immunocytochemistry/ Immunofluorescence 1:50 - 1:100, Immunohistochemistry-Paraffin 5 ug/ml, Flow (Cell Surface), CyTOF-ready

**Images**

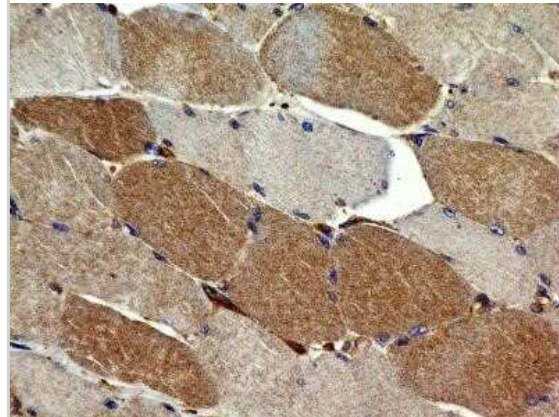
Western Blot: VEGFR2/KDR/FIk-1 Antibody (1B6) - Azide and BSA Free [NBP2-81008] - Analysis of VEGF R2/KDR/FIk-1 (1B6) in purified human recombinant protein. Image from the standard format of this antibody.



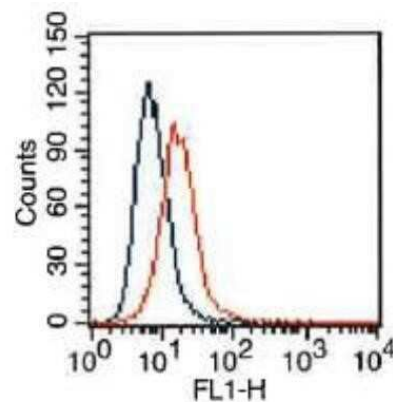
Immunocytochemistry/Immunofluorescence: VEGFR2/KDR/Flk-1 Antibody (1B6) - Azide and BSA Free [NBP2-81008] - Detection in HUVEC cells at 1:50 Image from the standard format of this antibody.



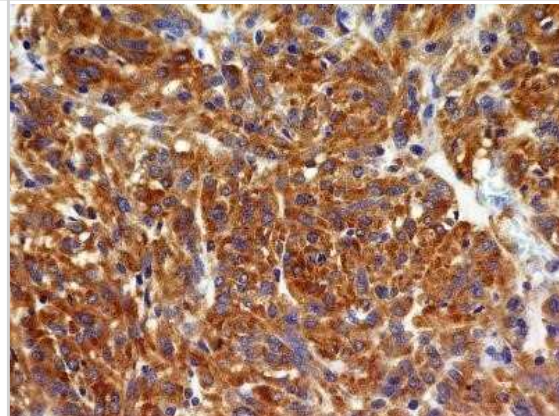
Immunohistochemistry-Paraffin: VEGFR2/KDR/Flk-1 Antibody (1B6) - Azide and BSA Free [NBP2-81008] - Analysis of FFPE transverse section of normal human skeletal muscle with mouse monoclonal VEGF R2/KDR/Flk-1 antibody (clone 1B6) at 5 ug/ml concentration. The myocytes showed a moderate diffused to granular staining in the cytoplasm. Image from the standa



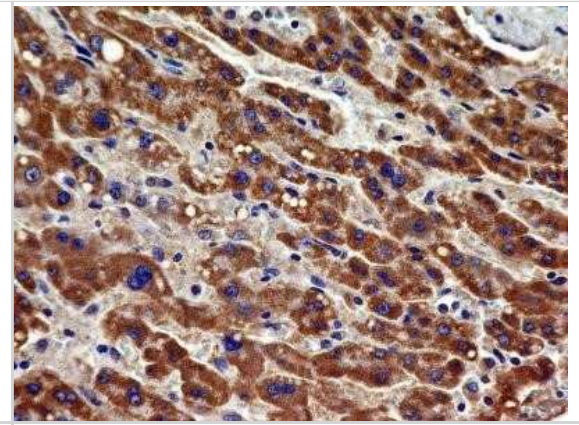
Flow Cytometry: VEGFR2/KDR/Flk-1 Antibody (1B6) - Azide and BSA Free [NBP2-81008] - HepG2 cells were stained (surface) with VEGF R2/KDR/Flk-1 antibody (clone: 2B5.1B6, orange) or isotype control (mouse IgG1, blue) and positive staining observed using FITC conjugated mouse anti-IgG(H+L) secondary antibody. Live cells (PPI negative) were gated for analysis Image from the standard format of this antibody.



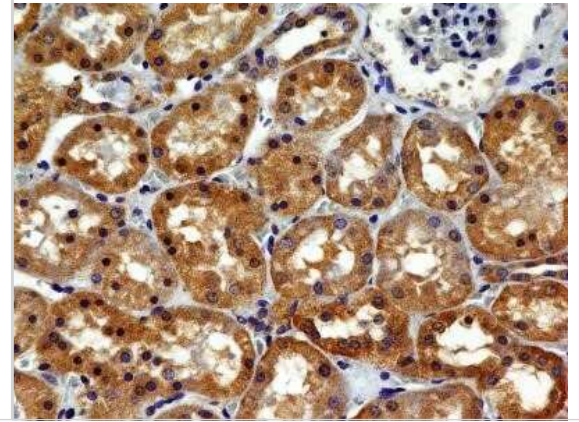
Immunohistochemistry-Paraffin: VEGFR2/KDR/Flk-1 Antibody (1B6) - Azide and BSA Free [NBP2-81008] - Analysis of FFPE tissue section of a malignant stromal tumor of the human small bowel with mouse monoclonal VEGF R2/KDR/Flk-1 antibody (clone 1B6) at 5 ug/ml concentration. The cancer cells depicted a specific and strong staining in the cytoplasm. Image f



Immunohistochemistry-Paraffin: VEGFR2/KDR/Flk-1 Antibody (1B6) - Azide and BSA Free [NBP2-81008] - Analysis of FFPE tissue section of human liver cancer with mouse monoclonal VEGF R2/KDR/Flk-1 antibody (clone 1B6) at 5 ug/ml concentration. The cancer cells showed a specific and strong staining in the cytoplasm. Image from the standard format of this an



Immunohistochemistry-Paraffin: VEGFR2/KDR/Flk-1 Antibody (1B6) - Azide and BSA Free [NBP2-81008] - Analysis of FFPE tissue section of human normal kidney with mouse monoclonal VEGF R2/KDR/Flk-1 antibody (clone 1B6) at 5 ug/ml concentration. The cuboidal epithelial cells of various tubules/ducts showed a specific cytoplasmic immunopositivity of prote





### **Novus Biologicals USA**

10730 E. Briarwood Avenue  
Centennial, CO 80112  
USA  
Phone: 303.730.1950  
Toll Free: 1.888.506.6887  
Fax: 303.730.1966  
nb-customerservice@bio-techne.com

### **Bio-Techne Canada**

21 Canmotor Ave  
Toronto, ON M8Z 4E6  
Canada  
Phone: 905.827.6400  
Toll Free: 855.668.8722  
Fax: 905.827.6402  
canada.inquires@bio-techne.com

### **Bio-Techne Ltd**

19 Barton Lane  
Abingdon Science Park  
Abingdon, OX14 3NB, United Kingdom  
Phone: (44) (0) 1235 529449  
Free Phone: 0800 37 34 15  
Fax: (44) (0) 1235 533420  
info.EMEA@bio-techne.com

### **General Contact Information**

www.novusbio.com  
Technical Support: nb-technical@bio-techne.com  
Orders: nb-customerservice@bio-techne.com  
General: novus@novusbio.com

### **Products Related to NBP2-81008**

---

NBP2-33376H	Blue Marker Antibody (6F4-F6) [HRP]
HAF007	Goat anti-Mouse IgG Secondary Antibody [HRP]
NB7539	Goat anti-Mouse IgG (H+L) Secondary Antibody [HRP]
NBP1-43319-0.5mg	Mouse IgG1 Kappa Isotype Control (P3.6.2.8.1)

---

### **Limitations**

This product is for research use only and is not approved for use in humans or in clinical diagnosis. Primary Antibodies are guaranteed for 1 year from date of receipt.

For more information on our 100% guarantee, please visit [www.novusbio.com/guarantee](http://www.novusbio.com/guarantee)

Earn gift cards/discounts by submitting a review: [www.novusbio.com/reviews/submit/NBP2-81008](http://www.novusbio.com/reviews/submit/NBP2-81008)

Earn gift cards/discounts by submitting a publication using this product:  
[www.novusbio.com/publications](http://www.novusbio.com/publications)

