

# Product Datasheet

## RPE65 Antibody (401.8B11.3D9) - Azide and BSA Free NBP2-80931

Unit Size: 0.2 ml

Aliquot and store at -20C or -80C. Avoid freeze-thaw cycles.

[www.novusbio.com](http://www.novusbio.com)



[technical@novusbio.com](mailto:technical@novusbio.com)

Protocols, Publications, Related Products, Reviews, Research Tools and Images at:  
[www.novusbio.com/NBP2-80931](http://www.novusbio.com/NBP2-80931)

Updated 9/9/2025 v.20.1

Earn rewards for product  
reviews and publications.

Submit a publication at [www.novusbio.com/publications](http://www.novusbio.com/publications)

Submit a review at [www.novusbio.com/reviews/destination/NBP2-80931](http://www.novusbio.com/reviews/destination/NBP2-80931)



**NBP2-80931**

RPE65 Antibody (401.8B11.3D9) - Azide and BSA Free

Product Information	
Unit Size	0.2 ml
Concentration	1 mg/ml
Storage	Aliquot and store at -20C or -80C. Avoid freeze-thaw cycles.
Clonality	Monoclonal
Clone	401.8B11.3D9
Preservative	No Preservative
Isotype	IgG1 Kappa
Purity	Protein G purified
Buffer	PBS
Target Molecular Weight	65 kDa

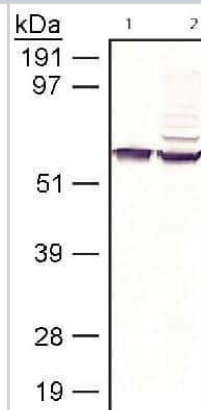
Product Description	
Description	Novus Biologicals Mouse RPE65 Antibody (401.8B11.3D9) - Azide and BSA Free (NB100-355) is a monoclonal antibody validated for use in IHC, WB, Flow, ICC/IF and IP. All Novus Biologicals antibodies are covered by our 100% guarantee.
Host	Mouse
Gene ID	6121
Gene Symbol	RPE65
Species	Human, Mouse, Rat, Porcine, Bovine, Canine, Chicken, Primate, Xenopus
Reactivity Notes	Based on immunogen sequence similarity, this RPE65 Antibody (401.8B11.3D9) is predicted to react with most Birds species (89%).
Immunogen	This RPE65 Antibody (401.8B11.3D9) - Azide and BSA Free was developed against bovine RPE65 microsomal membrane proteins. [UniProt# Q28175]

Product Application Details	
Applications	Western Blot, Immunohistochemistry-Paraffin, Flow Cytometry, Immunocytochemistry/ Immunofluorescence, Immunohistochemistry, Immunohistochemistry-Frozen, Immunoprecipitation, CyTOF-ready
Recommended Dilutions	Western Blot 1:500 - 1:1000, Flow Cytometry, Immunohistochemistry 1:250, Immunocytochemistry/ Immunofluorescence 1:10-1:500, Immunoprecipitation reported by customer review, Immunohistochemistry-Paraffin 1:250-1:500, Immunohistochemistry-Frozen 1:250, CyTOF-ready
Application Notes	For Western blot, this antibody has been validated in lysates of bovine RPE membrane and COS7 cells transfected with human RPE65, and in both samples, the antibody recognized a band at ~65 kDa, representing RPE65 protein. Note:- Hamel et al. have reported that in cultured bovine RPE cells, the levels of RPE65 are undetectable in WB after day 14, however, the mRNA levels are detectable by Northern for at least 7 weeks (PMID: 8340400). The observed molecular weight of the protein may vary from the listed predicted molecular weight due to post translational modifications, post translation cleavages, relative charges, and other experimental factors. This antibody is CyTOF ready.

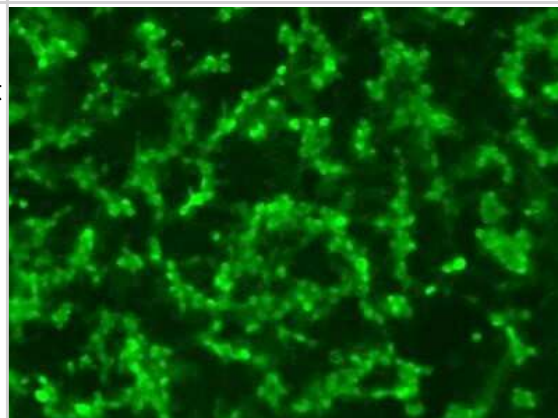


## Images

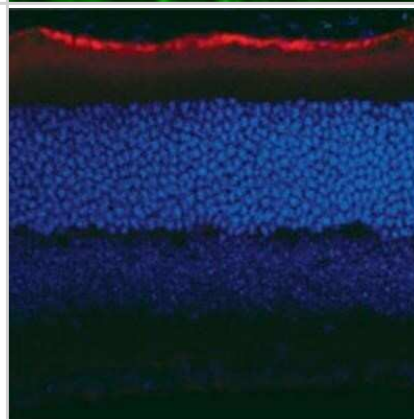
Western Blot: RPE65 Antibody (401.8B11.3D9) - Azide and BSA Free [NBP2-80931] - WB analysis of RPE65 in 20ug lysate of COS7 cells expressing recombinant Human RPE65 (Lane 1) and 5ug of Bovine retinal pigment epithelium membrane fraction (Lane 2). Blot processed for detection with alkaline phosphatase conjugated goat-anti Mouse IgG secondary antibody and NBT/BCIP substrate. Image from the standard format of this antibody.



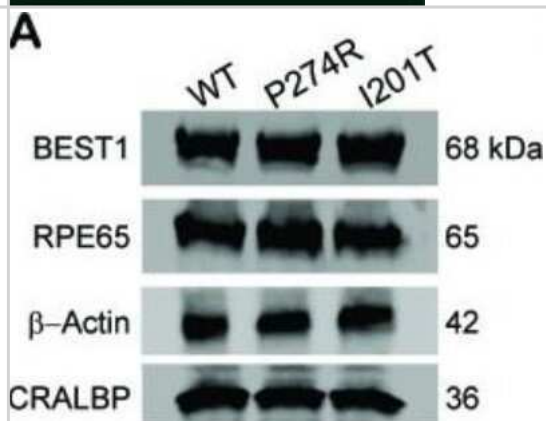
Immunocytochemistry/Immunofluorescence: RPE65 Antibody (401.8B11.3D9) - Azide and BSA Free [NBP2-80931] - ICC-IF analysis of cultured ARPE19 cells, a spontaneously arising human retinal pigment epithelia cell line - 10 minutes fixation in 4% PFA, 10 minutes permeabilization in PBS containing 0.2% Triton X-100 (PBS-T), 1 hour blocking in 10% normal goat serum containing 1% BSA in PBS-T, 1:100 primary antibody dilution in PBS, ON 4C incubation. Image from the standard format of this antibody.



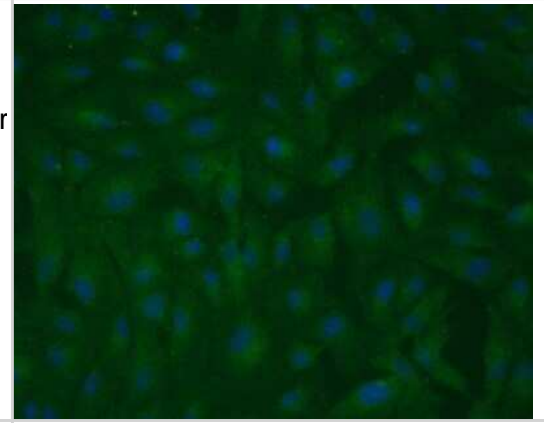
Immunohistochemistry-Frozen: RPE65 Antibody (401.8B11.3D9) - Azide and BSA Free [NBP2-80931] - Staining of RPE65 in a cryosection of mouse retina tissue using RPE65 antibody (clone 401.8B11.3D9). Image from the standard format of this antibody.



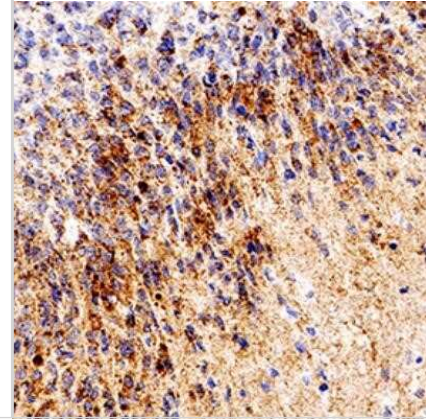
Western Blot: RPE65 Antibody (401.8B11.3D9) - Azide and BSA Free [NBP2-80931] - Subcellular localization of BEST1 and surface Ca<sup>2+</sup>-dependent Cl<sup>-</sup> current in patient-derived iPSC-RPEs. Western blots show similar BEST1 expression levels in WT and patient-derived iPSC-RPEs. Each sample was from one cell lysis (BEST1 and beta-actin, RPE65 and CRALBP were on two gels, respectively). Image collected and cropped by CiteAb from the following publication (<https://elifesciences.org/articles/29914>), licensed under a CC-BY license. Image from the standard format of this antibody.



Immunocytochemistry/Immunofluorescence: RPE65 Antibody (401.8B11.3D9) - Azide and BSA Free [NBP2-80931] - ARPE-19 monolayer on glass substrate. Fixative Methanol Blocking Goat Serum. Dilution 1:250. Incubation 1h RT. This image was submitted via customer Review. Image from the standard format of this antibody.



Immunohistochemistry-Paraffin: RPE65 Antibody (401.8B11.3D9) - Azide and BSA Free [NBP2-80931] - Analysis of FFPE human glioblastoma tissue section using 1:500 dilution of RPE65 [401.8B11.3D9] antibody on a Bond Rx autostainer (Leica Biosystems). The assay involved 20 minutes of heat induced antigen retrieval (HIER) with 10mM sodium citrate buffer (p





### **Novus Biologicals USA**

10730 E. Briarwood Avenue  
Centennial, CO 80112  
USA  
Phone: 303.730.1950  
Toll Free: 1.888.506.6887  
Fax: 303.730.1966  
nb-customerservice@bio-techne.com

### **Bio-Techne Canada**

21 Canmotor Ave  
Toronto, ON M8Z 4E6  
Canada  
Phone: 905.827.6400  
Toll Free: 855.668.8722  
Fax: 905.827.6402  
canada.inquires@bio-techne.com

### **Bio-Techne Ltd**

19 Barton Lane  
Abingdon Science Park  
Abingdon, OX14 3NB, United Kingdom  
Phone: (44) (0) 1235 529449  
Free Phone: 0800 37 34 15  
Fax: (44) (0) 1235 533420  
info.EMEA@bio-techne.com

### **General Contact Information**

www.novusbio.com  
Technical Support: nb-technical@bio-techne.com  
Orders: nb-customerservice@bio-techne.com  
General: novus@novusbio.com

### **Products Related to NBP2-80931**

---

NBP2-33376H	Blue Marker Antibody (6F4-F6) [HRP]
HAF007	Goat anti-Mouse IgG Secondary Antibody [HRP]
NB7539	Goat anti-Mouse IgG (H+L) Secondary Antibody [HRP]
NBP1-43319-0.5mg	Mouse IgG1 Kappa Isotype Control (P3.6.2.8.1)

---

### **Limitations**

This product is for research use only and is not approved for use in humans or in clinical diagnosis. Primary Antibodies are guaranteed for 1 year from date of receipt.

For more information on our 100% guarantee, please visit [www.novusbio.com/guarantee](http://www.novusbio.com/guarantee)

Earn gift cards/discounts by submitting a review: [www.novusbio.com/reviews/submit/NBP2-80931](http://www.novusbio.com/reviews/submit/NBP2-80931)

Earn gift cards/discounts by submitting a publication using this product:  
[www.novusbio.com/publications](http://www.novusbio.com/publications)

