

Product Datasheet

PSGL-1/CD162 Antibody (HECA-452) - Azide and BSA Free NBP2-80921

Unit Size: 0.1 ml

Store at 4C short term. Aliquot and store at -20C long term. Avoid freeze-thaw cycles.

www.novusbio.com



technical@novusbio.com

Protocols, Publications, Related Products, Reviews, Research Tools and Images at:
www.novusbio.com/NBP2-80921

Updated 9/9/2025 v.20.1

Earn rewards for product
reviews and publications.

Submit a publication at www.novusbio.com/publications

Submit a review at www.novusbio.com/reviews/destination/NBP2-80921

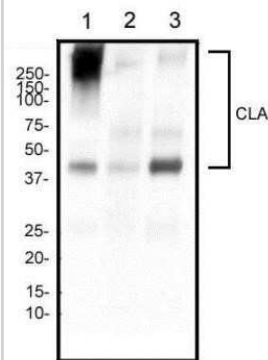


NBP2-80921**PSGL-1/CD162 Antibody (HECA-452) - Azide and BSA Free**

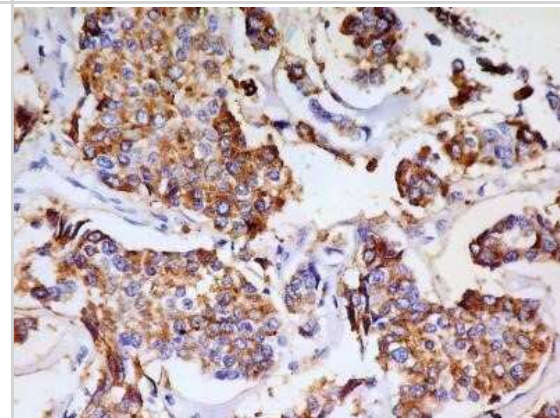
Product Information	
Unit Size	0.1 ml
Concentration	1 mg/ml
Storage	Store at 4C short term. Aliquot and store at -20C long term. Avoid freeze-thaw cycles.
Clonality	Monoclonal
Clone	HECA-452
Preservative	No Preservative
Isotype	IgM Kappa
Purity	IgM purified
Buffer	PBS
Product Description	
Description	Novus Biologicals Rat PSGL-1/CD162 Antibody (HECA-452) - Azide and BSA Free (NB100-78039) is a monoclonal antibody validated for use in IHC, WB, ELISA and Flow. All Novus Biologicals antibodies are covered by our 100% guarantee.
Host	Rat
Gene ID	6404
Gene Symbol	SELPLG
Species	Human, Mouse
Specificity/Sensitivity	CLA antibody clone HECA-452 is known to recognize the cutaneous lymphocyte-associated antigen / CLA which is a specialized glycosylated form of P-selectin glycoprotein ligand-1/PSGL-1. Besides lymphocytes, this clone has been shown to react with normal endometrium as well as breast cancer tissues (PMID 19625313 and 22970241).
Immunogen	Human tonsil stroma
Product Application Details	
Applications	Western Blot, Immunohistochemistry-Paraffin, ELISA, Flow Cytometry, Flow (Cell Surface), Immunohistochemistry, Immunohistochemistry-Frozen, CyTOF-ready
Recommended Dilutions	Western Blot 2 ug/ml, Flow Cytometry 2 ug/10 ⁶ cells in 100 ul, ELISA, Immunohistochemistry 1:10-1:500, Immunohistochemistry-Paraffin 1:10-1:500, Immunohistochemistry-Frozen 1:10-1:500, Flow (Cell Surface), CyTOF-ready
Application Notes	This antibody is Cytof ready.

Images

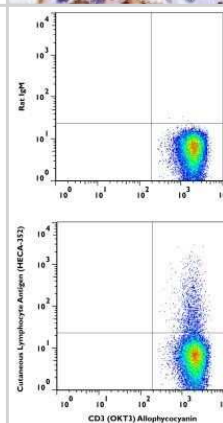
Western Blot: PSGL-1/CD162 Antibody (HECA-452) - Azide and BSA Free [NBP2-80921] - Analysis of human tonsil (1), human spleen (2), and human lymph node (3) tissue using CD162 antibody at a concentration of 2 ug/ml. Image from the standard format of this antibody.



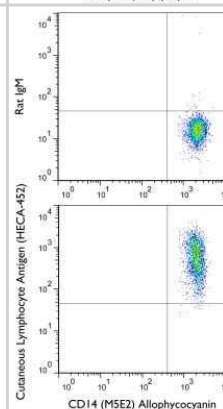
Immunohistochemistry: PSGL-1/CD162 Antibody (HECA-452) - Azide and BSA Free [NBP2-80921] - IHC analysis of formalin-fixed paraffin-embedded tissue section of human breast adenocarcinoma using CLA antibody (clone HECA-452) at 5 ug/ml concentration. The antibody generated a membrane-cytoplasmic staining in the cancerous cells of breast adenocarci



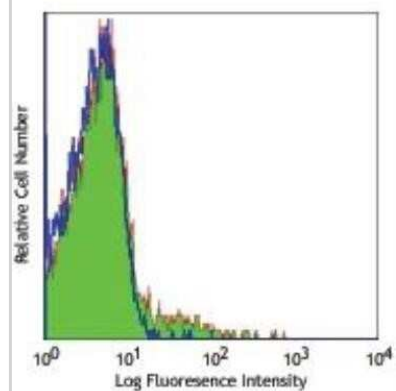
Flow (Cell Surface): PSGL-1/CD162 Antibody (HECA-452) - Azide and BSA Free [NBP2-80921] - A cell surface stain was performed on CD3+ hPBMCs with Cutaneous Lymphocyte Antigen (CLA) antibody (HECA-452) NB100-78039 and a matched isotype control NBP2-31379. Cells were incubated in an antibody dilution of 1 ug/mL for 20 minutes at room temperature, followed by mouse F(ab)2 IgG (H+L) APC-conjugated secondary antibody [F0101B, R&D Systems]. A co-stain was performed using CD3 antibody NBP2-25186APC. Image from the standard format of this antibody.



Flow (Cell Surface): PSGL-1/CD162 Antibody (HECA-452) - Azide and BSA Free [NBP2-80921] - A cell surface stain was performed on CD14+ hPBMCs with Cutaneous Lymphocyte Antigen (CLA) antibody (HECA-452) NB100-78039 and a matched isotype control NBP2-31379. Cells were incubated in an antibody dilution of 1 ug/mL for 20 minutes at room temperature, followed by rat-Dylight 488 conjugated secondary antibody. A co-stain was performed using CD14 antibody NB100-77758AF488. Image from the standard format of this antibody.



Flow Cytometry: PSGL-1/CD162 Antibody (HECA-452) - Azide and BSA Free [NBP2-80921] - Human peripheral blood lymphocytes stained with purified HECA-452, followed by anti-mouse IgG FITC Image from the standard format of this antibody.





Novus Biologicals USA

10730 E. Briarwood Avenue
Centennial, CO 80112
USA
Phone: 303.730.1950
Toll Free: 1.888.506.6887
Fax: 303.730.1966
nb-customerservice@bio-techne.com

Bio-Techne Canada

21 Canmotor Ave
Toronto, ON M8Z 4E6
Canada
Phone: 905.827.6400
Toll Free: 855.668.8722
Fax: 905.827.6402
canada.inquires@bio-techne.com

Bio-Techne Ltd

19 Barton Lane
Abingdon Science Park
Abingdon, OX14 3NB, United Kingdom
Phone: (44) (0) 1235 529449
Free Phone: 0800 37 34 15
Fax: (44) (0) 1235 533420
info.EMEA@bio-techne.com

General Contact Information

www.novusbio.com
Technical Support: nb-technical@bio-techne.com
Orders: nb-customerservice@bio-techne.com
General: novus@novusbio.com

Products Related to NBP2-80921

NBP2-33376H	Blue Marker Antibody (6F4-F6) [HRP]
HAF005	Goat anti-Rat IgG Secondary Antibody [HRP]
NB7115	Goat anti-Rat IgG (H+L) Secondary Antibody [HRP]
NBP3-16974PEP	PSGL-1/CD162 Recombinant Protein Antigen

Limitations

This product is for research use only and is not approved for use in humans or in clinical diagnosis. Primary Antibodies are guaranteed for 1 year from date of receipt.

For more information on our 100% guarantee, please visit www.novusbio.com/guarantee

Earn gift cards/discounts by submitting a review: www.novusbio.com/reviews/submit/NBP2-80921

Earn gift cards/discounts by submitting a publication using this product:
www.novusbio.com/publications

