

Product Datasheet

PLA2R1 Antibody (12-6-5) - Azide and BSA Free NBP2-80912

Unit Size: 0.1 ml

Store at 4C short term. Aliquot and store at -20C long term. Avoid freeze-thaw cycles.

www.novusbio.com



technical@novusbio.com

Protocols, Publications, Related Products, Reviews, Research Tools and Images at:
www.novusbio.com/NBP2-80912

Updated 9/9/2025 v.20.1

Earn rewards for product
reviews and publications.

Submit a publication at www.novusbio.com/publications

Submit a review at www.novusbio.com/reviews/destination/NBP2-80912



NBP2-80912

PLA2R1 Antibody (12-6-5) - Azide and BSA Free

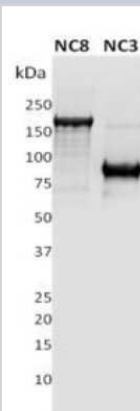
| Product Information | |
|---------------------|--|
| Unit Size | 0.1 ml |
| Concentration | 1 mg/ml |
| Storage | Store at 4C short term. Aliquot and store at -20C long term. Avoid freeze-thaw cycles. |
| Clonality | Monoclonal |
| Clone | 12-6-5 |
| Preservative | No Preservative |
| Isotype | IgG2b |
| Purity | Protein G purified |
| Buffer | PBS |

| Product Description | |
|---------------------|---|
| Description | Novus Biologicals Mouse PLA2R1 Antibody (12-6-5) - Azide and BSA Free (NBP2-50248) is a monoclonal antibody validated for use in IHC, WB, ELISA, Flow and ICC/IF. All Novus Biologicals antibodies are covered by our 100% guarantee. |
| Host | Mouse |
| Gene ID | 22925 |
| Gene Symbol | PLA2R1 |
| Species | Human |
| Immunogen | Human PLA2R extracellular sequence N-C3 (containing domains N-terminal Cysteine rich-FibII-CTLD1-CTLD2-CTLD3). Genbank acc no. U17033; amino acids 20-663 Recombinant protein expressed in HEK 293-EBNA-1 cells |

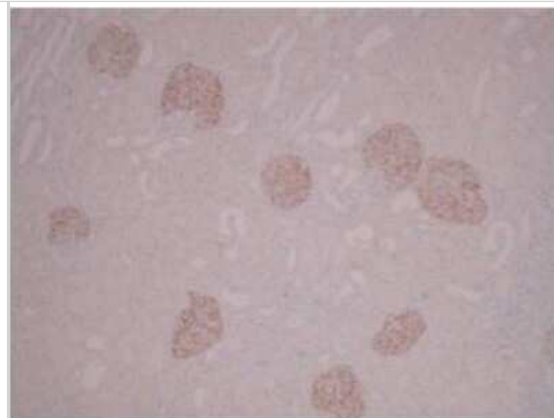
| Product Application Details | |
|-----------------------------|---|
| Applications | Western Blot, ELISA, Flow Cytometry, Immunocytochemistry/ Immunofluorescence, Immunohistochemistry, CyTOF-ready |
| Recommended Dilutions | Western Blot 1:5000 - 1:10000, Flow Cytometry 1:200, ELISA 1:5000 - 1:20000, Immunohistochemistry 1:5000 - 1:20000, Immunocytochemistry/ Immunofluorescence 1:10 - 1:500, CyTOF-ready |
| Application Notes | This antibody is Cytof ready. |

Images

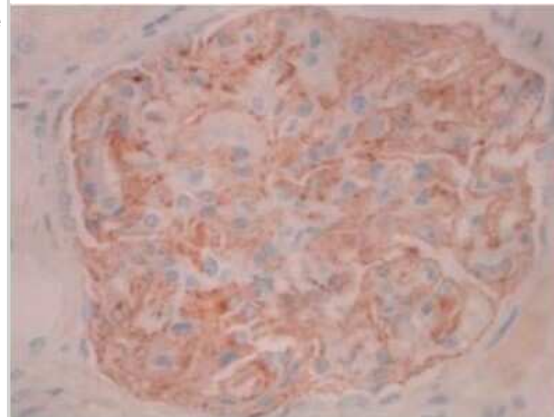
Western Blot: PLA2R1 Antibody (12-6-5) - Azide and BSA Free [NBP2-80912] - 1ug of recombinant full length extracellular domain of human PLA2R (NC8) and a N-terminus fragment of PLA2R (NC3) were subjected to SDS PAGE followed by western blot using Ms anti-PLAR (C112-6-5) at dilution 1:10000. Image from the standard format of this antibody.



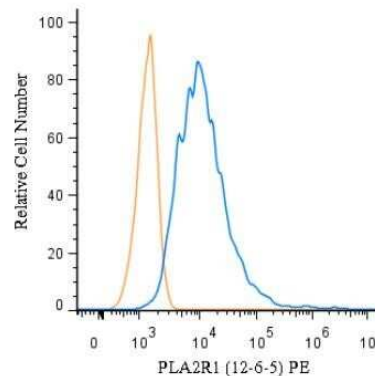
Immunocytochemistry: PLA2R1 Antibody (12-6-5) - Azide and BSA Free [NBP2-80912] - Normal human kidney showing glomerular specific staining. IHC Protocol Info: HIER pH8 (CC1) for 64 minutes, 36 minute primary antibody (PLA2R Mouse 12-6-5) incubation at room temperature using a dilution of 1:5000, using Ventana Ultraview DAB detection sy



Immunohistochemistry: PLA2R1 Antibody (12-6-5) - Azide and BSA Free [NBP2-80912] - Normal human kidney showing podocyte specific staining. IHC Protocol Info: HIER pH8 (CC1) for 64 minutes, 36 minute primary antibody (PLA2R Mouse 12-6-5) incubation at room temperature using a dilution of 1:5000, using Ventana Ultraview DAB detection syst

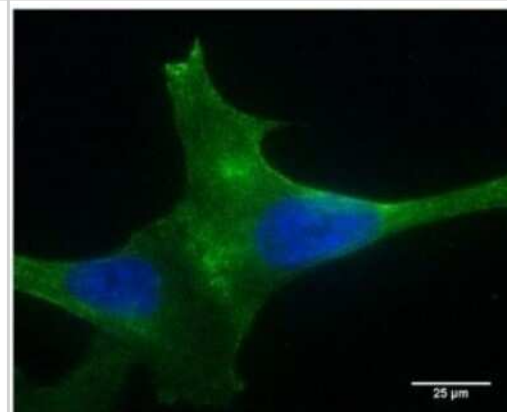


Flow Cytometry: PLA2R1 Antibody (12-6-5) - Azide and BSA Free [NBP2-80912] - A surface stain was performed on HeLa cells with PLA2R1 Antibody (12-6-5) NBP2-50248PE (blue) and a matched isotype control (orange). Cells were incubated in an antibody dilution of 2.5 ug/mL for 20 minutes at room temperature. Both antibodies were directly conjugated to phycoerythrin.

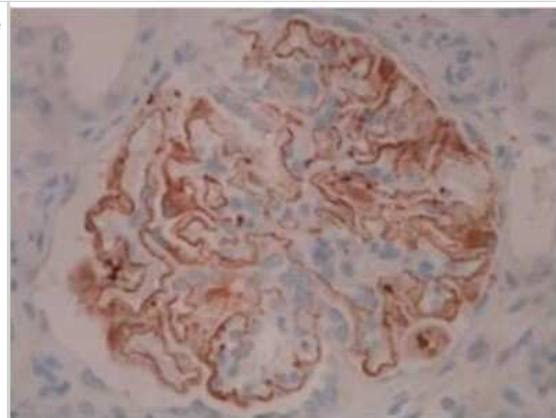


Copyright © 2018 Novus Biologicals

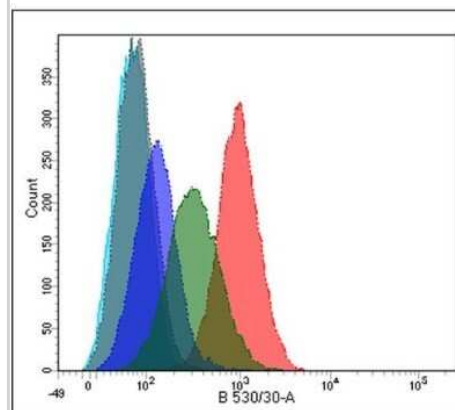
Immunocytochemistry/Immunofluorescence: PLA2R1 Antibody (12-6-5) - Azide and BSA Free [NBP2-80912] - Staining of PLA2R over-expressing podocytes revealing cell surface expression of the PLA2R receptor. Dilution 1:400 (under 40x lens). Image from the standard format of this antibody.



Immunohistochemistry: PLA2R1 Antibody (12-6-5) - Azide and BSA Free [NBP2-80912] - Membranous nephropathy kidney showing staining of PLA2R in the capillary wall of the glomerular basement membrane. IHC Protocol Info: HIER pH8 (CC1) for 64 minutes, 36 minute primary antibody (PLA2R Mouse 12-6-5) incubation at room temperature using a dil



Flow Cytometry: PLA2R1 Antibody (12-6-5) - Azide and BSA Free [NBP2-80912] - Overlay flow cytometry histograms of wild type (dark blue line) and over-expressing PLA2R podocytes (low expressor, green line; high expressor, red line) stained with Ms C12-6-5) at dilution 1:200. Negative controls were unlabelled cells (turquoise line) and mouse IgG (grey line). Image from the standard format of this antibody.





Novus Biologicals USA

10730 E. Briarwood Avenue
Centennial, CO 80112
USA
Phone: 303.730.1950
Toll Free: 1.888.506.6887
Fax: 303.730.1966
nb-customerservice@bio-techne.com

Bio-Techne Canada

21 Canmotor Ave
Toronto, ON M8Z 4E6
Canada
Phone: 905.827.6400
Toll Free: 855.668.8722
Fax: 905.827.6402
canada.inquires@bio-techne.com

Bio-Techne Ltd

19 Barton Lane
Abingdon Science Park
Abingdon, OX14 3NB, United Kingdom
Phone: (44) (0) 1235 529449
Free Phone: 0800 37 34 15
Fax: (44) (0) 1235 533420
info.EMEA@bio-techne.com

General Contact Information

www.novusbio.com
Technical Support: nb-technical@bio-techne.com
Orders: nb-customerservice@bio-techne.com
General: novus@novusbio.com

Products Related to NBP2-80912

| | |
|-------------|--|
| NBP2-33376H | Blue Marker Antibody (6F4-F6) [HRP] |
| HAF007 | Goat anti-Mouse IgG Secondary Antibody [HRP] |
| NB7539 | Goat anti-Mouse IgG (H+L) Secondary Antibody [HRP] |
| NBP2-27231 | Mouse IgG2b Isotype Control (MPC-11) |

Limitations

This product is for research use only and is not approved for use in humans or in clinical diagnosis. Primary Antibodies are guaranteed for 1 year from date of receipt.

For more information on our 100% guarantee, please visit www.novusbio.com/guarantee

Earn gift cards/discounts by submitting a review: www.novusbio.com/reviews/submit/NBP2-80912

Earn gift cards/discounts by submitting a publication using this product:
www.novusbio.com/publications

