

Product Datasheet

Integrin beta 1/CD29 Antibody (P4C10) - Azide and BSA Free NBP2-80818

Unit Size: 0.1 ml

Store at 4C short term. Aliquot and store at -20C long term. Avoid freeze-thaw cycles.

www.novusbio.com



technical@novusbio.com

Protocols, Publications, Related Products, Reviews, Research Tools and Images at:
www.novusbio.com/NBP2-80818

Updated 9/9/2025 v.20.1

Earn rewards for product reviews and publications.

Submit a publication at www.novusbio.com/publications

Submit a review at www.novusbio.com/reviews/destination/NBP2-80818

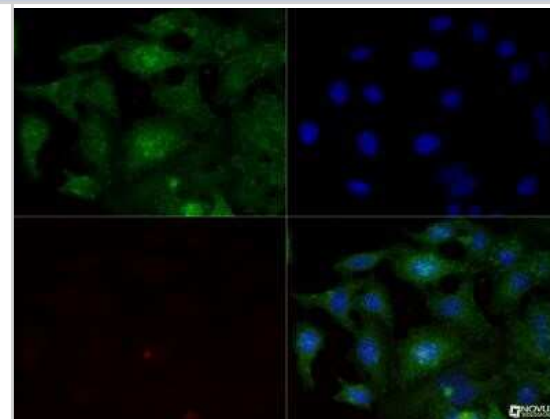


NBP2-80818**Integrin beta 1/CD29 Antibody (P4C10) - Azide and BSA Free**

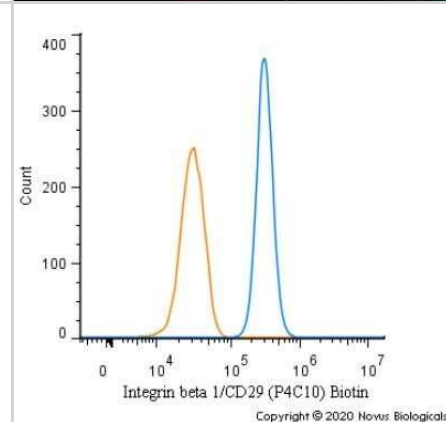
Product Information	
Unit Size	0.1 ml
Concentration	1 mg/ml
Storage	Store at 4C short term. Aliquot and store at -20C long term. Avoid freeze-thaw cycles.
Clonality	Monoclonal
Clone	P4C10
Preservative	No Preservative
Isotype	IgG1
Purity	Protein G purified
Buffer	PBS
Target Molecular Weight	88 kDa
Product Description	
Description	Novus Biologicals Mouse Integrin beta 1/CD29 Antibody (P4C10) - Azide and BSA Free (NBP2-36561) is a monoclonal antibody validated for use in IHC, WB, ELISA, Flow, ICC/IF and IP. All Novus Biologicals antibodies are covered by our 100% guarantee.
Host	Mouse
Gene ID	3688
Gene Symbol	ITGB1
Species	Human, Mouse
Reactivity Notes	Mouse reactivity reported in scientific literature (PMID: 27550917).
Immunogen	HT1080 cells human fibrosarcoma
Product Application Details	
Applications	Western Blot, ELISA, Flow Cytometry, Immunocytochemistry/Immunofluorescence, Immunohistochemistry, Immunohistochemistry-Frozen, Immunoprecipitation, Block/Neutralize, CyTOF-ready
Recommended Dilutions	Western Blot reported in scientific literature (PMID 27550917), Flow Cytometry 1:10, ELISA, Immunohistochemistry, Immunocytochemistry/Immunofluorescence 1:10-1:100, Immunoprecipitation, Immunohistochemistry-Frozen 1:10-1:100, CyTOF-ready, Block/Neutralize
Application Notes	For ICC/IF ,methanol fixation is recommended. The P4C10 antibody inhibits endodermal cell and keratinocyte attachment to collagen type 1, fibronectin and laminin; also inhibits cell-cell adhesion.

Images

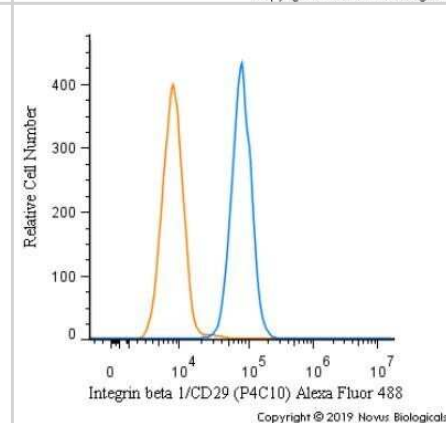
Immunocytochemistry/Immunofluorescence: Integrin beta 1/CD29 Antibody (P4C10) - Azide and BSA Free [NBP2-80818] - Integrin beta 1 (P4C10) antibody was tested in -20 degree MeOH fixed HeLa cells at a 1:200 dilution against DyLight 488 (green). Actin and nuclei were counterstained against Phalloidin 568 (red) and DAPI (blue), respectively. Image from the standard format of this antibody.



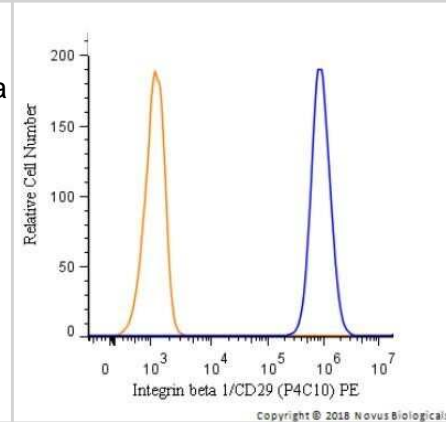
Flow Cytometry: Integrin beta 1/CD29 Antibody (P4C10) - Azide and BSA Free [NBP2-80818] - An intracellular stain was performed on A431 cells with Integrin beta 1/CD29 [P4C10] Antibody NBP2-36561B (blue) and a matched isotype control (orange). Both antibodies were directly conjugated to Biotin. Cells were fixed with 4% PFA and then permeabilized with 0.1% saponin. Cells were incubated in an antibody dilution of 2.5 ug/mL for 30 minutes at room temperature, followed by Streptavidin - R-Phycoerythrin Protein (2012-1000, Novus Biologicals). Image from the standard format of this antibody.



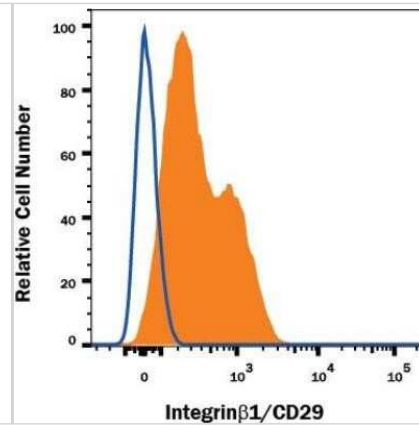
Flow Cytometry: Integrin beta 1/CD29 Antibody (P4C10) - Azide and BSA Free [NBP2-80818] - A surface stain was performed on HeLa cells with Integrin beta 1/CD29 [P4C10] Antibody NBP2-36561AF488 (blue) and a matched isotype control (orange). Cells were incubated in an antibody dilution of 5 ug/mL for 20 minutes at room temperature. Both antibodies were directly conjugated to Alexa Fluor 488.



Flow Cytometry: Integrin beta 1/CD29 Antibody (P4C10) - Azide and BSA Free [NBP2-80818] - A surface stain was performed on HeLa cells with Integrin beta 1/CD29 [P4C10] Antibody NBP2-36561PE (blue) and a matched isotype control (orange). Cells were incubated in an antibody dilution of 2.5 ug/mL for 20 minutes at room temperature. Both antibodies were directly conjugated to phycoerythrin.



Flow Cytometry: Integrin beta 1/CD29 Antibody (P4C10) - Azide and BSA Free [NBP2-80818] - Flow Cytometry: Integrin beta 1/CD29 Antibody (P4C10) [NBP2-36561] Image from the standard format of this antibody.





Novus Biologicals USA

10730 E. Briarwood Avenue
Centennial, CO 80112
USA
Phone: 303.730.1950
Toll Free: 1.888.506.6887
Fax: 303.730.1966
nb-customerservice@bio-techne.com

Bio-Techne Canada

21 Canmotor Ave
Toronto, ON M8Z 4E6
Canada
Phone: 905.827.6400
Toll Free: 855.668.8722
Fax: 905.827.6402
canada.inquires@bio-techne.com

Bio-Techne Ltd

19 Barton Lane
Abingdon Science Park
Abingdon, OX14 3NB, United Kingdom
Phone: (44) (0) 1235 529449
Free Phone: 0800 37 34 15
Fax: (44) (0) 1235 533420
info.EMEA@bio-techne.com

General Contact Information

www.novusbio.com
Technical Support: nb-technical@bio-techne.com
Orders: nb-customerservice@bio-techne.com
General: novus@novusbio.com

Products Related to NBP2-80818

NBP2-33376H	Blue Marker Antibody (6F4-F6) [HRP]
HAF007	Goat anti-Mouse IgG Secondary Antibody [HRP]
NB7539	Goat anti-Mouse IgG (H+L) Secondary Antibody [HRP]
NBP1-97005-0.5mg	Mouse IgG1 Isotype Control (MG1)

Limitations

This product is for research use only and is not approved for use in humans or in clinical diagnosis. Primary Antibodies are guaranteed for 1 year from date of receipt.

For more information on our 100% guarantee, please visit www.novusbio.com/guarantee

Earn gift cards/discounts by submitting a review: www.novusbio.com/reviews/submit/NBP2-80818

Earn gift cards/discounts by submitting a publication using this product:
www.novusbio.com/publications

