

# Product Datasheet

## HLA-DR Antibody (L243) - Azide and BSA Free NBP2-80773

Unit Size: 0.1 ml

Store at 4C short term. Aliquot and store at -20C long term. Avoid freeze-thaw cycles.

[www.novusbio.com](http://www.novusbio.com)



[technical@novusbio.com](mailto:technical@novusbio.com)

Protocols, Publications, Related Products, Reviews, Research Tools and Images at:  
[www.novusbio.com/NBP2-80773](http://www.novusbio.com/NBP2-80773)

Updated 9/9/2025 v.20.1

Earn rewards for product  
reviews and publications.

Submit a publication at [www.novusbio.com/publications](http://www.novusbio.com/publications)

Submit a review at [www.novusbio.com/reviews/destination/NBP2-80773](http://www.novusbio.com/reviews/destination/NBP2-80773)



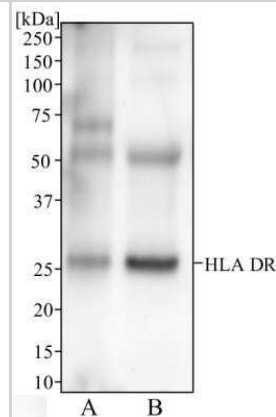
**NBP2-80773**

HLA-DR Antibody (L243) - Azide and BSA Free

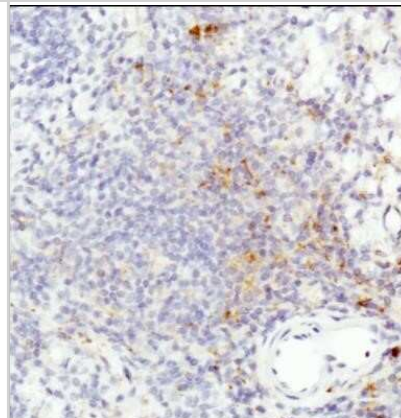
<b>Product Information</b>	
<b>Unit Size</b>	0.1 ml
<b>Concentration</b>	1 mg/ml
<b>Storage</b>	Store at 4C short term. Aliquot and store at -20C long term. Avoid freeze-thaw cycles.
<b>Clonality</b>	Monoclonal
<b>Clone</b>	L243
<b>Preservative</b>	No Preservative
<b>Isotype</b>	IgG2a Kappa
<b>Purity</b>	Protein A purified
<b>Buffer</b>	PBS
<b>Target Molecular Weight</b>	28 kDa
<b>Product Description</b>	
<b>Description</b>	Novus Biologicals Mouse HLA-DR Antibody (L243) - Azide and BSA Free (NB100-77855) is a monoclonal antibody validated for use in IHC, WB, ELISA, Flow, Dual RNAscope ISH-IHC, ICC/IF and IP. All Novus Biologicals antibodies are covered by our 100% guarantee.
<b>Host</b>	Mouse
<b>Gene ID</b>	3122
<b>Gene Symbol</b>	HLA-DRA
<b>Species</b>	Human, Canine, Baboon, Primate
<b>Reactivity Notes</b>	Predicted cross-reactivity with Chimpanzee, Baboon, Cynomolgus, Rhesus, Marmoset, Tamarin, Squirrel Monkey
<b>Immunogen</b>	Human lymphoblastoid cell line (RPMI 8866).
<b>Product Application Details</b>	
<b>Applications</b>	Western Blot, Immunohistochemistry-Paraffin, ELISA, Electron Microscopy, Flow Cytometry, Flow (Cell Surface), Functional, Immunocytochemistry/ Immunofluorescence, Immunohistochemistry, Immunohistochemistry-Frozen, In vitro assay, Immunoprecipitation, Block/Neutralize, CyTOF-ready, Dual RNAscope ISH-IHC
<b>Recommended Dilutions</b>	Western Blot 1:100 - 1:2000, Flow Cytometry 0.5 ug/10 <sup>6</sup> cells, ELISA reported in scientific literature (PMID 11070170), Immunohistochemistry 1:10 - 1:500, Immunocytochemistry/ Immunofluorescence reported in scientific literature (PMID 7835916), Immunoprecipitation 1:10 - 1:500, Immunohistochemistry-Paraffin 1:100, Immunohistochemistry-Frozen 1:10 - 1:500, Functional reported in scientific literature (PMID 17900279), In vitro assay reported in scientific literature (PMID 19620786), Electron Microscopy reported in scientific literature (PMID 21660937), Flow (Cell Surface), CyTOF-ready, Block/Neutralize reported in scientific literature (PMID 12874328), Dual RNAscope ISH-IHC
<b>Application Notes</b>	It is recommended that the reagent be titrated for optimal performance for each application. This antibody is CyTOF ready.

## Images

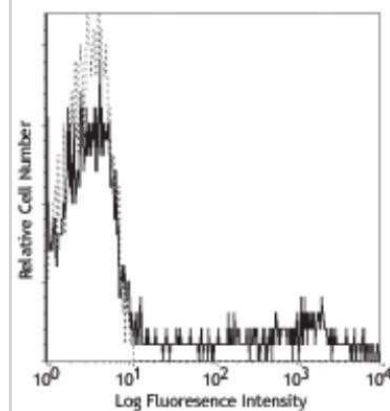
Western Blot: HLA-DR Antibody (L243) - Azide and BSA Free [NBP2-80773] - Analysis of human spleen (A) and human tonsil (B) tissue using HLA-DR antibody at 2 ug/mL. Image from the standard format of this antibody.



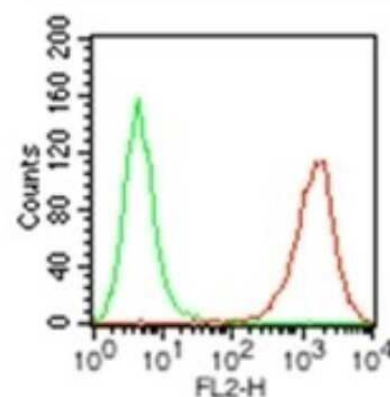
Immunohistochemistry: HLA-DR Antibody (L243) - Azide and BSA Free [NBP2-80773] - Staining of HLA-DR in human spleen using DAB with hematoxylin counterstain. Image from the standard format of this antibody.



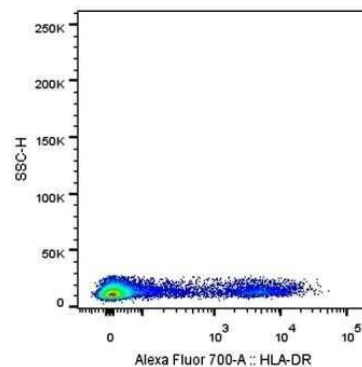
Flow Cytometry: HLA-DR Antibody (L243) - Azide and BSA Free [NBP2-80773] - Human peripheral blood lymphocytes stained with L243 PE. Image from the standard format of this antibody.



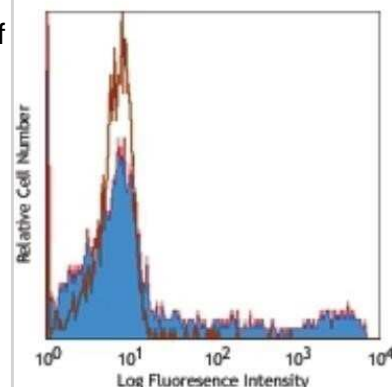
Flow (Cell Surface): HLA-DR Antibody (L243) - Azide and BSA Free [NBP2-80773] - Analysis using the Azide Free version of NB100-77855. Staining of HLA-DR expression by  $5 \times 10^5$  BDCM cells using 0.5 ug of (red) and 0.5 ug of isotype control (green). This antibody and an anti-mouse IgG PE conjugated secondary antibody were used.



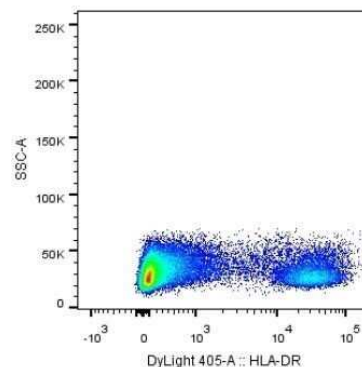
Flow Cytometry: HLA-DR Antibody (L243) - Azide and BSA Free [NBP2-80773] - Analysis using the Alexa Fluor (R) 700 conjugate of NB100-77855. Staining of HLA-DR protein in human PBMCs using HLA-DR antibody [clone L243; conjugated to Alexa Fluor (R) 700] at 1:100 with 25 minutes incubation at 4C in 2% human serum, 0.5 mM EDTA in DPBS. Image from verified customer review.



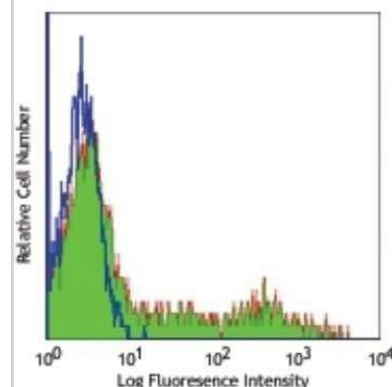
Flow Cytometry: HLA-DR Antibody (L243) - Azide and BSA Free [NBP2-80773] - Analysis using the Biotin conjugate of NB100-77855. Staining of Human peripheral blood lymphocytes with biotinylated L243, followed by Sav-PE.



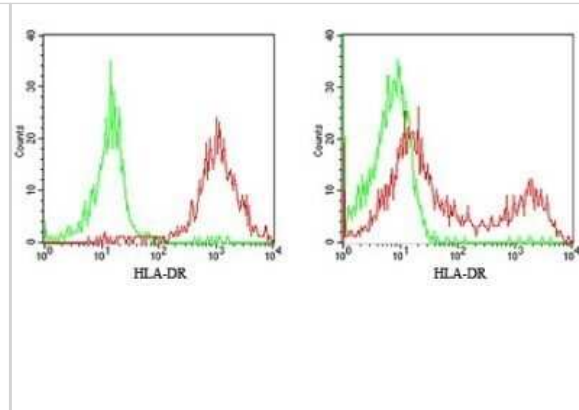
Flow Cytometry: HLA-DR Antibody (L243) - Azide and BSA Free [NBP2-80773] - Analysis using the DyLight 405 conjugate of NB100-77855. Staining of HLA-DR in human PBMCs using anti-HLA-DR antibody. Image from verified customer review.



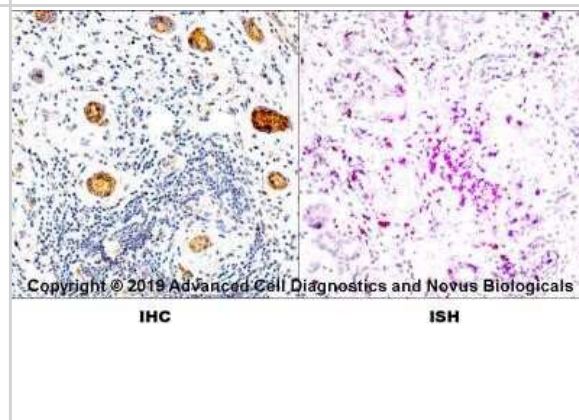
Flow Cytometry: HLA-DR Antibody (L243) - Azide and BSA Free [NBP2-80773] - Analysis using the FITC conjugate of NB100-77855. Staining of Human peripheral blood lymphocytes with L243 FITC.



Flow Cytometry: HLA-DR Antibody (L243) - Azide and BSA Free [NBP2-80773] - Analysis using the PerCP/Cy5.5 conjugate of NB100-77855. Staining of HLA-DR expression by  $5 \times 10^5$  human PBMC using 10  $\mu$ L (0.25  $\mu$ g) of this antibody. Cell surface flow kit was used for this test. Left panel shows the monocyte gate, right panel shows the lymphocyte gate.



Dual RNAscope ISH-IHC: HLA-DR Antibody (L243) - Azide and BSA Free [NBP2-80773] - Formalin-fixed paraffin-embedded tissue sections of human metastatic tonsil were probed for HLA-DR mRNA (ACD RNAscope probe, catalog # 475891; Fast Red chromogen, ACD catalog # 322500). Adjacent tissue section was processed for immunohistochemistry using mouse monoclonal (Novus catalog # NB100-77855) at 1:50 dilution for 1 hour at room temperature followed by incubation with the anti-mouse IgG VisUCyte HRP Polymer Antibody (Catalog # VC001) and DAB chromogen (yellow-brown). Tissue was counterstained with hematoxylin (blue). Image from the standard format of this antibody.





### **Novus Biologicals USA**

10730 E. Briarwood Avenue  
Centennial, CO 80112  
USA  
Phone: 303.730.1950  
Toll Free: 1.888.506.6887  
Fax: 303.730.1966  
nb-customerservice@bio-techne.com

### **Bio-Techne Canada**

21 Canmotor Ave  
Toronto, ON M8Z 4E6  
Canada  
Phone: 905.827.6400  
Toll Free: 855.668.8722  
Fax: 905.827.6402  
canada.inquires@bio-techne.com

### **Bio-Techne Ltd**

19 Barton Lane  
Abingdon Science Park  
Abingdon, OX14 3NB, United Kingdom  
Phone: (44) (0) 1235 529449  
Free Phone: 0800 37 34 15  
Fax: (44) (0) 1235 533420  
info.EMEA@bio-techne.com

### **General Contact Information**

www.novusbio.com  
Technical Support: nb-technical@bio-techne.com  
Orders: nb-customerservice@bio-techne.com  
General: novus@novusbio.com

### **Products Related to NBP2-80773**

---

NBP2-33376H	Blue Marker Antibody (6F4-F6) [HRP]
HAF007	Goat anti-Mouse IgG Secondary Antibody [HRP]
NB7539	Goat anti-Mouse IgG (H+L) Secondary Antibody [HRP]
NBP1-96981-0.5mg	Mouse IgG2a Kappa Isotype Control (M2AK)

---

### **Limitations**

This product is for research use only and is not approved for use in humans or in clinical diagnosis. Primary Antibodies are guaranteed for 1 year from date of receipt.

For more information on our 100% guarantee, please visit [www.novusbio.com/guarantee](http://www.novusbio.com/guarantee)

Earn gift cards/discounts by submitting a review: [www.novusbio.com/reviews/submit/NBP2-80773](http://www.novusbio.com/reviews/submit/NBP2-80773)

Earn gift cards/discounts by submitting a publication using this product:  
[www.novusbio.com/publications](http://www.novusbio.com/publications)

