

Product Datasheet

HIF-1 alpha Antibody (ESEE122) - Azide and BSA Free NBP2-80762

Unit Size: 0.1 ml

Aliquot and store at -20C or -80C. Avoid freeze-thaw cycles.

www.novusbio.com



technical@novusbio.com

Protocols, Publications, Related Products, Reviews, Research Tools and Images at:
www.novusbio.com/NBP2-80762

Updated 9/9/2025 v.20.1

Earn rewards for product
reviews and publications.

Submit a publication at www.novusbio.com/publications

Submit a review at www.novusbio.com/reviews/destination/NBP2-80762



NBP2-80762

HIF-1 alpha Antibody (ESEE122) - Azide and BSA Free

Product Information	
Unit Size	0.1 ml
Concentration	1 mg/ml
Storage	Aliquot and store at -20C or -80C. Avoid freeze-thaw cycles.
Clonality	Monoclonal
Clone	ESEE122
Preservative	No Preservative
Isotype	IgG1
Purity	Protein G purified
Buffer	Tris-Glycine, 0.15M NaCl
Target Molecular Weight	93 kDa

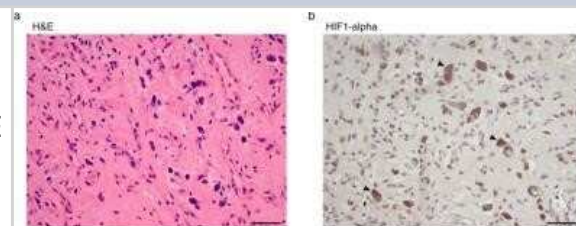
Product Description	
Description	Novus Biologicals Mouse HIF-1 alpha Antibody (ESEE122) - Azide and BSA Free (NB100-131) is a monoclonal antibody validated for use in IHC, WB, ICC/IF, Simple Western and IP. All Novus Biologicals antibodies are covered by our 100% guarantee.
Host	Mouse
Gene ID	3091
Gene Symbol	HIF1A
Species	Human, Mouse, Rat, Bovine, Canine
Reactivity Notes	Please note that this antibody is reactive to Mouse and derived from the same host, Mouse. Additional Mouse on Mouse blocking steps may be required for IHC and ICC experiments. Please contact Technical Support for more information.
Immunogen	This HIF-1 alpha Antibody (ESEE122) was developed against Human HIF-1 alpha, corresponding to amino acids 329 - 530 [Uniprot# Q16665].

Product Application Details	
Applications	Western Blot, Simple Western, Immunohistochemistry-Paraffin, Immunoblotting, Immunocytochemistry/ Immunofluorescence, Immunohistochemistry, Immunohistochemistry-Frozen, Immunoprecipitation
Recommended Dilutions	Western Blot 1:500 - 1:1000, Simple Western 1:2000, Immunohistochemistry, Immunocytochemistry/ Immunofluorescence 1:100, Immunoprecipitation 1:10 - 1:500. Use reported in scientific literature (PMID 26757928 Fig1G), Immunohistochemistry-Paraffin 1:100 - 1:5000, Immunohistochemistry-Frozen 1:100 - 1:5000, Immunoblotting
Application Notes	Variable results have been obtained in Western blot. In Simple Western only 10 - 15 uL of the recommended dilution is used per data point. See Simple Western Antibody Database for Simple Western validation: antibody dilution of 1:2000. Separated by Size-Wes, Sally Sue/Peggy Sue.

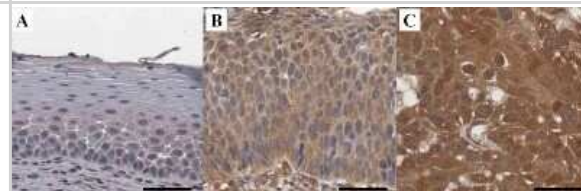


Images

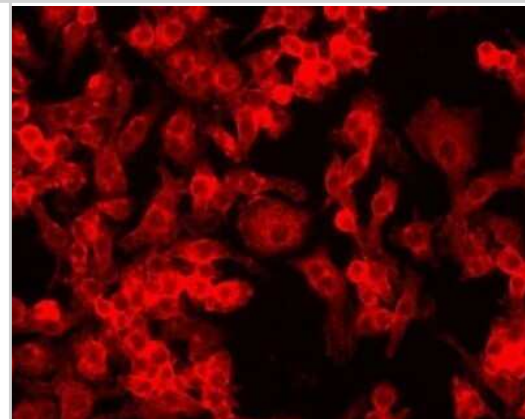
Immunocytochemistry: HIF-1 alpha Antibody (ESEE122) - Azide and BSA Free [NBP2-80762] - Histologically distinct cell types in hemangioblastomas do not arise from a common ancestral clone. Representative images of sample SH-0622 acquired at 400x of (a) H + E and IHC for (b) HIF1-alpha reveal heterogenous cell types in this tumor characterized



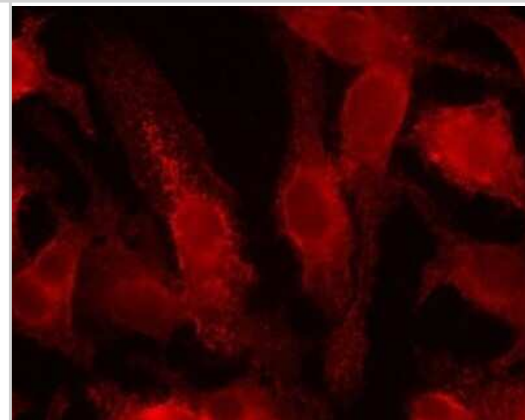
Immunohistochemistry: HIF-1 alpha Antibody (ESEE122) - Azide and BSA Free [NBP2-80762] - Representative immunohistochemical expression for HIF-1alpha, c-Met, CA9 and GLUT1. HIF-1alpha is stained in cytoplasm shown with no staining in normal cervix (A), weak staining intensity in high grade CIN (B), and strong staining intensity in squamous ce



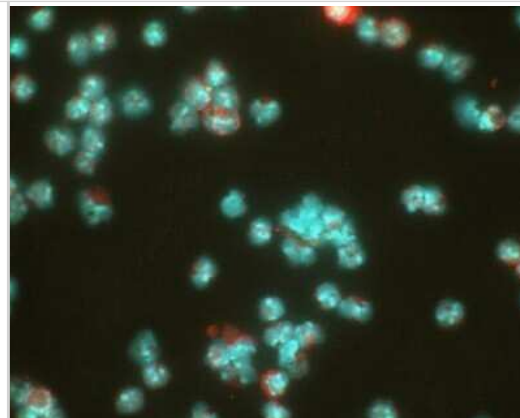
Immunocytochemistry/Immunofluorescence: HIF-1 alpha Antibody (ESEE122) - Azide and BSA Free [NBP2-80762] - Detection of HIF-1 alpha (red dye 568) in a cultured raw mouse macrophage cell line, using NB100-131. Photos courtesy of Susan Alexander and Hattie Gresham, PhD. Image from the standard format of this antibody.



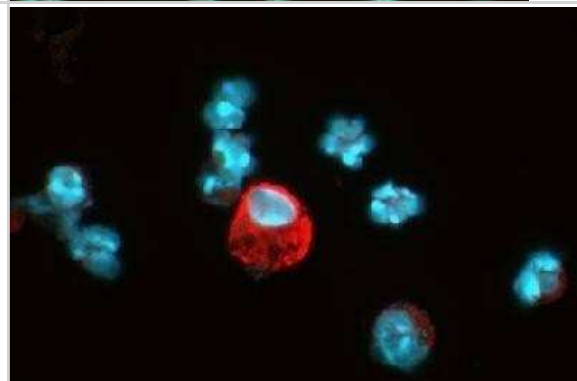
Immunocytochemistry/Immunofluorescence: HIF-1 alpha Antibody (ESEE122) - Azide and BSA Free [NBP2-80762] - Detection of HIF-1 alpha (red dye 568) in a cultured raw mouse macrophage cell line. 100X magnification. Image courtesy of Susan Alexander and Hattie Gresham, PhD. Image from the standard format of this antibody.



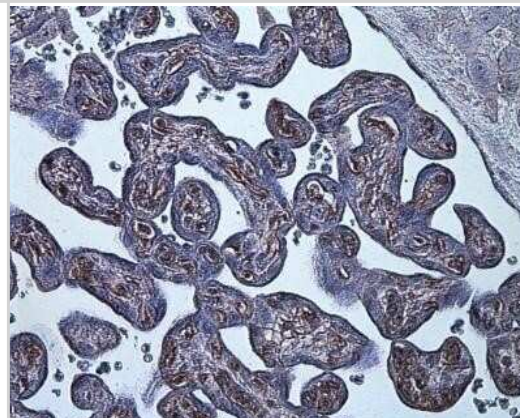
Immunocytochemistry/Immunofluorescence: HIF-1 alpha Antibody (ESEE122) - Azide and BSA Free [NBP2-80762] - Detection of HIF-1 alpha (red dye) in a cell cytospin from a lavage of a murine skin pouch infected with *S. aureus*, using NB100-131. Blue: DAPI nuclear staining. Image courtesy of Susan Alexander and Hattie Gresham, PhD. Image from the standard format of this antibody.



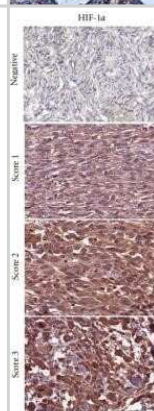
Immunocytochemistry/Immunofluorescence: HIF-1 alpha Antibody (ESEE122) - Azide and BSA Free [NBP2-80762] - Detection of HIF-1 alpha (red dye) in a cell cytospin from a lavage of a murine skin pouch infected with *S. aureus*. 100X magnification. Blue: DAPI nuclear staining. Image from the standard format of this antibody.



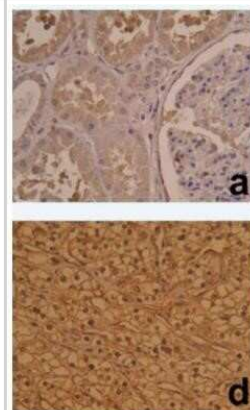
Immunohistochemistry: HIF-1 alpha Antibody (ESEE122) - Azide and BSA Free [NBP2-80762] - HIF-1 alpha staining in hypoxia-induced human placenta. Image from the standard format of this antibody.



Immunohistochemistry: HIF-1 alpha Antibody (ESEE122) - Azide and BSA Free [NBP2-80762] - Immunohistochemical analysis in non-GIST STS representing negative, and score 1-3 of Carbonic Anhydrase IX/CA9, GLUT-1, HIF-1 alpha, and HIF-2 alpha/EPAS1. non-GIST STS: non-gastrointestinal stromal tumor soft-tissue sarcomas, Carbonic Anhydrase IX/CA9: c

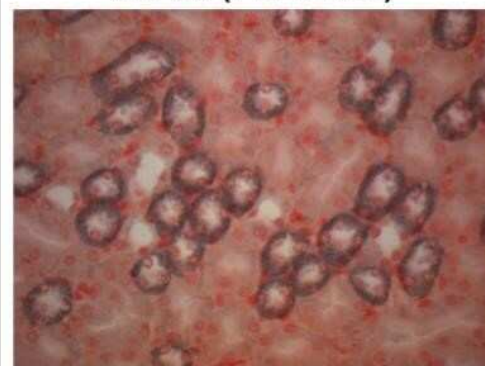


Immunohistochemistry: HIF-1 alpha Antibody (ESEE122) - Azide and BSA Free [NBP2-80762] - Immunohistochemical staining of HIF-1 alpha in normal renal tissue (A) and clear cell renal cell carcinoma (CCRCC) (D). A homogeneous cytoplasmic staining of tubular cells and weak staining in glomerules was observed with HIF-1 alpha (A). In CCRCC, HIF-1

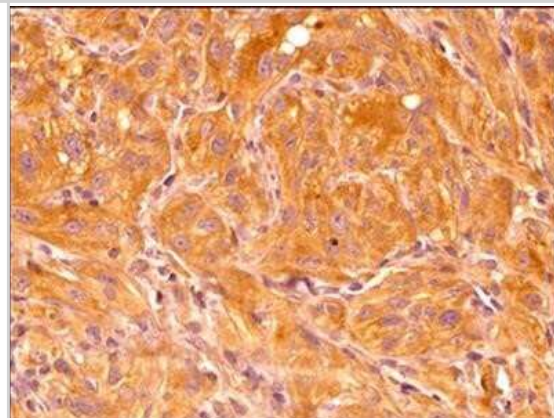


Immunohistochemistry-Paraffin: HIF-1 alpha Antibody (ESEE122) - Azide and BSA Free [NBP2-80762] - Analysis of a FFPE mouse kidney tissue section using HIF-1 alpha antibody clone ESEE122 at 1ug/mL concentration. The detection was performed using X-cell plus universal HRP polymer detection system with Vector SG chromagen substrate. Image courtesy of a p

HIF1 α (ESEE122)



Immunohistochemistry-Paraffin: HIF-1 alpha Antibody (ESEE122) - Azide and BSA Free [NBP2-80762] - Analysis of a FFPE tissue section of human renal cancer xenograft using HIF-1 alpha antibody (NB100-131 Lot 83115) at 1:200 dilution. The antibody generated a strong cytoplasmic staining mainly in the cancer cells. Only a fraction of cells depicted nuclei



Immunohistochemistry-Paraffin: HIF-1 alpha Antibody (ESEE122) - Azide and BSA Free [NBP2-80762] - Analysis of HIF-1 alpha in paraffin-embedded mouse kidney tissue section using anti-HIF-1 alpha antibody. Image from verified customer review. Image from the standard format of this antibody.



Immunohistochemistry: HIF-1 alpha Antibody (ESEE122) - Azide and BSA Free [NBP2-80762] - Negative control stain of human placenta (from sea level) using mouse IgG at 1:100. 4uM paraffin-embedded section. Image from the standard format of this antibody.



Simple Western: HIF-1 alpha Antibody (ESEE122) - Azide and BSA Free [NBP2-80762] - Image shows a specific band for HIF-1 alpha in 0.5 mg/mL of Hypoxic HeLa lysate. This experiment was performed under reducing conditions using the 12-230 kDa separation system. Image from the standard format of this antibody.





Novus Biologicals USA

10730 E. Briarwood Avenue
Centennial, CO 80112
USA
Phone: 303.730.1950
Toll Free: 1.888.506.6887
Fax: 303.730.1966
nb-customerservice@bio-techne.com

Bio-Techne Canada

21 Canmotor Ave
Toronto, ON M8Z 4E6
Canada
Phone: 905.827.6400
Toll Free: 855.668.8722
Fax: 905.827.6402
canada.inquires@bio-techne.com

Bio-Techne Ltd

19 Barton Lane
Abingdon Science Park
Abingdon, OX14 3NB, United Kingdom
Phone: (44) (0) 1235 529449
Free Phone: 0800 37 34 15
Fax: (44) (0) 1235 533420
info.EMEA@bio-techne.com

General Contact Information

www.novusbio.com
Technical Support: nb-technical@bio-techne.com
Orders: nb-customerservice@bio-techne.com
General: novus@novusbio.com

Products Related to NBP2-80762

NBP3-11855	NIH 3T3 CoCl ₂ treated/Untreated Cell Lysate
NBP2-33376H	Blue Marker Antibody (6F4-F6) [HRP]
HAF007	Goat anti-Mouse IgG Secondary Antibody [HRP]
NB7539	Goat anti-Mouse IgG (H+L) Secondary Antibody [HRP]
NBP1-97005-0.5mg	Mouse IgG1 Isotype Control (MG1)

Limitations

This product is for research use only and is not approved for use in humans or in clinical diagnosis. Primary Antibodies are guaranteed for 1 year from date of receipt.

For more information on our 100% guarantee, please visit www.novusbio.com/guarantee

Earn gift cards/discounts by submitting a review: www.novusbio.com/reviews/submit/NBP2-80762

Earn gift cards/discounts by submitting a publication using this product:
www.novusbio.com/publications

