

Product Datasheet

EpCAM/TROP1 Antibody (AUA1) - Azide and BSA Free NBP2-80721

Unit Size: 0.1 ml

Store at 4C short term. Aliquot and store at -20C long term. Avoid freeze-thaw cycles.

www.novusbio.com



technical@novusbio.com

Protocols, Publications, Related Products, Reviews, Research Tools and Images at:
www.novusbio.com/NBP2-80721

Updated 9/9/2025 v.20.1

Earn rewards for product
reviews and publications.

Submit a publication at www.novusbio.com/publications

Submit a review at www.novusbio.com/reviews/destination/NBP2-80721



NBP2-80721

EpCAM/TROP1 Antibody (AUA1) - Azide and BSA Free

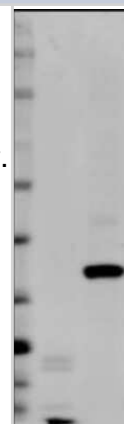
Product Information	
Unit Size	0.1 ml
Concentration	1 mg/ml
Storage	Store at 4C short term. Aliquot and store at -20C long term. Avoid freeze-thaw cycles.
Clonality	Monoclonal
Clone	AUA1
Preservative	No Preservative
Isotype	IgG1
Purity	Protein G purified
Buffer	PBS
Target Molecular Weight	35 kDa

Product Description	
Description	Novus Biologicals Mouse EpCAM/TROP1 Antibody (AUA1) - Azide and BSA Free (NB600-1182) is a monoclonal antibody validated for use in IHC, WB, ELISA, Flow and ICC/IF. All Novus Biologicals antibodies are covered by our 100% guarantee.
Host	Mouse
Gene ID	4072
Gene Symbol	EPCAM
Species	Human
Immunogen	LoVo cell line preparation (Human).

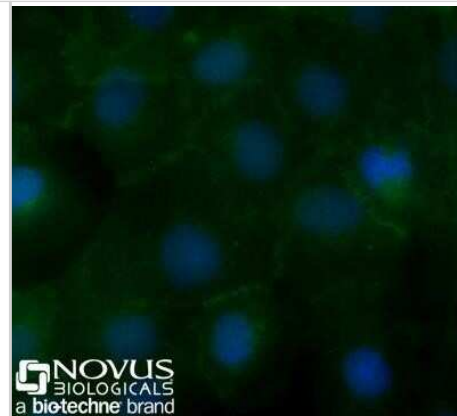
Product Application Details	
Applications	Western Blot, Immunohistochemistry-Paraffin, ELISA, Flow Cytometry, Immunocytochemistry/ Immunofluorescence, Immunohistochemistry, CyTOF-ready
Recommended Dilutions	Western Blot 1:500, Flow Cytometry 1 ug per million cells, ELISA 1:100-1:2000, Immunohistochemistry 1:10-1:500, Immunocytochemistry/ Immunofluorescence 1:10-1:500, Immunohistochemistry-Paraffin 1:10-1:500. Use reported in scientific literature (PMID 21763624), CyTOF-ready
Application Notes	This antibody is CyTOF ready.

Images

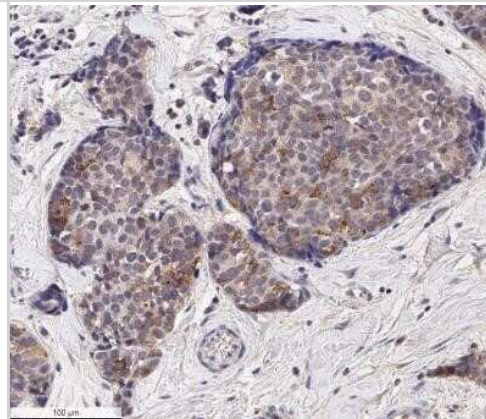
Western Blot: EpCAM/TROP1 Antibody (AUA1) - Azide and BSA Free [NBP2-80721] - Detection of EpCAM/CD326 in two Human mammary tumor cell lines, MDA-MB-231 (mesenchyme-like) and MCF-7 (epithelium-like). Dilution: 1:500 in PBS with 5% BSA. Secondary Ab: anti-Mouse IgG 1:5,000. This image was submitted via customer Review. Image from the standard format of this antibody.



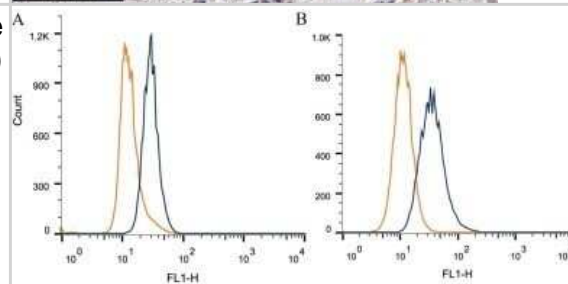
Immunocytochemistry/Immunofluorescence: EpCAM/TROP1 Antibody (AUA1) - Azide and BSA Free [NBP2-80721] - A431 cells were fixed for 10 minutes using 10% formalin and then permeabilized for 5 minutes using 1X PBS + 0.05% Triton X-100. The cells were incubated with anti-EpCAM/TROP1 (AUA1) conjugated to Alexa Fluor 488 [NB600-1182AF488] at 10ug/ml for 1 hour at room temperature. Nuclei were counterstained with DAPI (blue). Cells were imaged using a 40X objective.



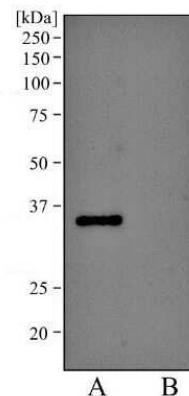
Immunohistochemistry: EpCAM/TROP1 Antibody (AUA1) - Azide and BSA Free [NBP2-80721] - Analysis of a FFPE human breast carcinoma tissue with 1:500 dilution of EpCAM/TROP1 antibody (clone AUA1) on a Bond Rx autostainer (Leica Biosystems). The assay involved 20 minutes of heat induced antigen retrieval (HIER) with 10mM sodium citrate buffer (



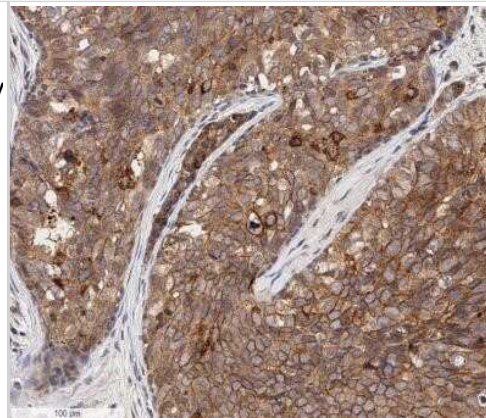
Flow Cytometry: EpCAM/TROP1 Antibody (AUA1) - Azide and BSA Free [NBP2-80721] - Intracellular flow cytometric staining of 1×10^6 CHO (A) and HeLa (B) cells using EpCAM/CD326 antibody (blue) and matched Isotype control (orange). An antibody concentration of 1 ug/ 1×10^6 cells was used. Image from the standard format of this antibody.



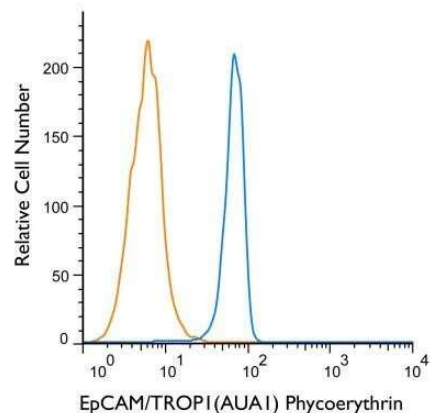
Western Blot: EpCAM/TROP1 Antibody (AUA1) - Azide and BSA Free [NBP2-80721] - Analysis of A431 lysate (A) and Hek293 lysate (B) using EpCAM/CD326 antibody (AUA1) at 2 ug/ml. Non-reduced lysate was used in each lane. Image from the standard format of this antibody.



Immunohistochemistry-Paraffin: EpCAM/TROP1 Antibody (AUA1) - Azide and BSA Free [NBP2-80721] - Analysis of a FFPE human breast carcinoma tissue section using 1:100 dilution of EpCAM/TROP1 antibody (clone AUA1) on a Bond Rx autostainer (Leica Biosystems). The assay involved 20 minutes of heat induced antigen retrieval (HIER) with 10mM sodium citrate



Flow Cytometry: EpCAM/TROP1 Antibody (AUA1) - Azide and BSA Free [NBP2-80721] - Using the PE direct conjugate A cell surface stain was performed on HT-29 cells with EpCAM (AUA1) antibody NB600-1182PE (blue) and a matched isotype control NBP2-27287PE (orange). Cells were incubated in an antibody dilution of 5 ug/mL for 20 minutes at room temperature. Both antibodies were directly conjugated to phycoerythrin.





Novus Biologicals USA

10730 E. Briarwood Avenue
Centennial, CO 80112
USA
Phone: 303.730.1950
Toll Free: 1.888.506.6887
Fax: 303.730.1966
nb-customerservice@bio-techne.com

Bio-Techne Canada

21 Canmotor Ave
Toronto, ON M8Z 4E6
Canada
Phone: 905.827.6400
Toll Free: 855.668.8722
Fax: 905.827.6402
canada.inquires@bio-techne.com

Bio-Techne Ltd

19 Barton Lane
Abingdon Science Park
Abingdon, OX14 3NB, United Kingdom
Phone: (44) (0) 1235 529449
Free Phone: 0800 37 34 15
Fax: (44) (0) 1235 533420
info.EMEA@bio-techne.com

General Contact Information

www.novusbio.com
Technical Support: nb-technical@bio-techne.com
Orders: nb-customerservice@bio-techne.com
General: novus@novusbio.com

Products Related to NBP2-80721

NBP2-33376H	Blue Marker Antibody (6F4-F6) [HRP]
HAF007	Goat anti-Mouse IgG Secondary Antibody [HRP]
NB7539	Goat anti-Mouse IgG (H+L) Secondary Antibody [HRP]
NBP1-97005-0.5mg	Mouse IgG1 Isotype Control (MG1)

Limitations

This product is for research use only and is not approved for use in humans or in clinical diagnosis. Primary Antibodies are guaranteed for 1 year from date of receipt.

For more information on our 100% guarantee, please visit www.novusbio.com/guarantee

Earn gift cards/discounts by submitting a review: www.novusbio.com/reviews/submit/NBP2-80721

Earn gift cards/discounts by submitting a publication using this product:
www.novusbio.com/publications

