

# Product Datasheet

## CTLA-4 Antibody (37B3D8.2F2) - Azide and BSA Free NBP2-80683

Unit Size: 0.1 mg

Store at 4C short term. Aliquot and store at -20C long term. Avoid freeze-thaw cycles.

[www.novusbio.com](http://www.novusbio.com)



[technical@novusbio.com](mailto:technical@novusbio.com)

Protocols, Publications, Related Products, Reviews, Research Tools and Images at:  
[www.novusbio.com/NBP2-80683](http://www.novusbio.com/NBP2-80683)

Updated 9/9/2025 v.20.1

Earn rewards for product  
reviews and publications.

Submit a publication at [www.novusbio.com/publications](http://www.novusbio.com/publications)

Submit a review at [www.novusbio.com/reviews/destination/NBP2-80683](http://www.novusbio.com/reviews/destination/NBP2-80683)



**NBP2-80683**

CTLA-4 Antibody (37B3D8.2F2) - Azide and BSA Free

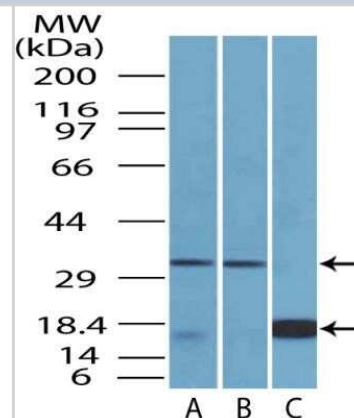
Product Information	
Unit Size	0.1 mg
Concentration	1 mg/ml
Storage	Store at 4C short term. Aliquot and store at -20C long term. Avoid freeze-thaw cycles.
Clonality	Monoclonal
Clone	37B3D8.2F2
Preservative	No Preservative
Purity	Protein A purified
Buffer	PBS

Product Description	
Description	Novus Biologicals Mouse CTLA-4 Antibody (37B3D8.2F2) - Azide and BSA Free (NBP2-31143) is a monoclonal antibody validated for use in WB. All Novus Biologicals antibodies are covered by our 100% guarantee.
Host	Mouse
Gene ID	1493
Gene Symbol	CTLA4
Species	Human, Mouse
Immunogen	Mouse CTLA4

Product Application Details	
Applications	Western Blot
Recommended Dilutions	Western Blot 2 ug/ml
Application Notes	CTLA4 protein is 223 amino acids long (~24.7 kDa) which is processed via cleavage at AA35 to produce 188 amino acids long chain which further undergoes post-translational modifications such as N-glycosylation, disulfide bond formation/dimerization and phosphorylation. In Western blot, the mature CTLA4 protein runs between ~35-45kDa position.

**Images**

Western Blot: CTLA-4 Antibody (37B3D8.2F2) - Azide and BSA Free [NBP2-80683] - Analysis of CTLA-4 protein on (A) mouse Kidney lysate (B) human Kidney lysate and on (C) partial recombinant protein using CTLA-4 monoclonal antibody at a concentration of 2 ug/ml. Image from the standard format of this antibody.





### **Novus Biologicals USA**

10730 E. Briarwood Avenue  
Centennial, CO 80112  
USA  
Phone: 303.730.1950  
Toll Free: 1.888.506.6887  
Fax: 303.730.1966  
nb-customerservice@bio-techne.com

### **Bio-Techne Canada**

21 Canmotor Ave  
Toronto, ON M8Z 4E6  
Canada  
Phone: 905.827.6400  
Toll Free: 855.668.8722  
Fax: 905.827.6402  
canada.inquires@bio-techne.com

### **Bio-Techne Ltd**

19 Barton Lane  
Abingdon Science Park  
Abingdon, OX14 3NB, United Kingdom  
Phone: (44) (0) 1235 529449  
Free Phone: 0800 37 34 15  
Fax: (44) (0) 1235 533420  
info.EMEA@bio-techne.com

### **General Contact Information**

www.novusbio.com  
Technical Support: nb-technical@bio-techne.com  
Orders: nb-customerservice@bio-techne.com  
General: novus@novusbio.com

### **Products Related to NBP2-80683**

---

NBP2-33376H	Blue Marker Antibody (6F4-F6) [HRP]
HAF007	Goat anti-Mouse IgG Secondary Antibody [HRP]
NB7539	Goat anti-Mouse IgG (H+L) Secondary Antibody [HRP]
NBP2-22987	Recombinant Human CTLA-4 His Protein

---

### **Limitations**

This product is for research use only and is not approved for use in humans or in clinical diagnosis. Primary Antibodies are guaranteed for 1 year from date of receipt.

For more information on our 100% guarantee, please visit [www.novusbio.com/guarantee](http://www.novusbio.com/guarantee)

Earn gift cards/discounts by submitting a review: [www.novusbio.com/reviews/submit/NBP2-80683](http://www.novusbio.com/reviews/submit/NBP2-80683)

Earn gift cards/discounts by submitting a publication using this product:  
[www.novusbio.com/publications](http://www.novusbio.com/publications)

