

# Product Datasheet

## CD2 Antibody (RPA-2.10) - Azide and BSA Free NBP2-80635

Unit Size: 0.1 mg

Store at 4C short term. Aliquot and store at -20C long term. Avoid freeze-thaw cycles.

[www.novusbio.com](http://www.novusbio.com)



[technical@novusbio.com](mailto:technical@novusbio.com)

Protocols, Publications, Related Products, Reviews, Research Tools and Images at:  
[www.novusbio.com/NBP2-80635](http://www.novusbio.com/NBP2-80635)

Updated 9/9/2025 v.20.1

Earn rewards for product  
reviews and publications.

Submit a publication at [www.novusbio.com/publications](http://www.novusbio.com/publications)

Submit a review at [www.novusbio.com/reviews/destination/NBP2-80635](http://www.novusbio.com/reviews/destination/NBP2-80635)



**NBP2-80635**

CD2 Antibody (RPA-2.10) - Azide and BSA Free

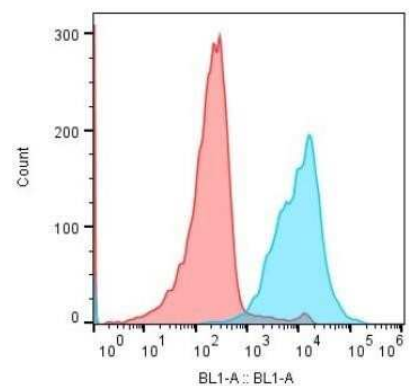
Product Information	
Unit Size	0.1 mg
Concentration	0.5 mg/ml
Storage	Store at 4C short term. Aliquot and store at -20C long term. Avoid freeze-thaw cycles.
Clonality	Monoclonal
Clone	RPA-2.10
Preservative	No Preservative
Isotype	IgG1 Kappa
Purity	Protein G purified
Buffer	PBS

Product Description	
Description	Novus Biologicals Mouse CD2 Antibody (RPA-2.10) - Azide and BSA Free (NBP2-25200) is a monoclonal antibody validated for use in IHC, WB and Flow. All Novus Biologicals antibodies are covered by our 100% guarantee.
Host	Mouse
Gene ID	914
Gene Symbol	CD2
Species	Human
Immunogen	A recombinant protein was used as the immunogen for the CD2 antibody.

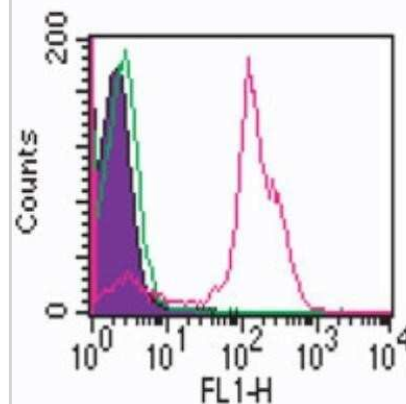
Product Application Details	
Applications	Western Blot, Flow Cytometry, Immunohistochemistry, Immunohistochemistry-Frozen, Block/Neutralize
Recommended Dilutions	Western Blot 1:100-1:2000, Flow Cytometry 0.1-0.25 ug per 1x10 <sup>6</sup> cells. Use reported by customer review, Immunohistochemistry 1:10-1:500, Immunohistochemistry-Frozen 1:10-1:500, Block/Neutralize

**Images**

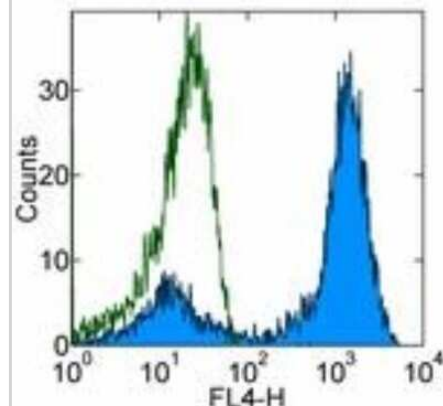
Flow Cytometry: CD2 Antibody (RPA-2.10) - Azide and BSA Free [NBP2-80635] - CD3+ T-Cells isolated from PBMCs stained with anti-CD2 Alexa Fluor 488 (BL1). Image from a verified customer review. Image from the standard format of this antibody.



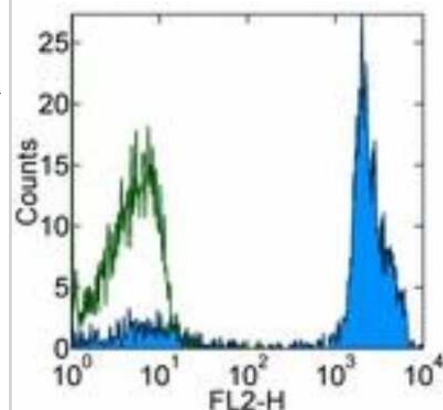
Flow Cytometry: CD2 Antibody (RPA-2.10) - Azide and BSA Free [NBP2-80635] - Analysis using the Alexa Fluor (R) 488 conjugate of NBP2-25200. Staining of CD2 in  $10^6$  human lymphocytes using 10 ul (0.25 ug) of this antibody. Shaded histogram represents cells without antibody; green represents isotype control ; red represents anti-CD2.



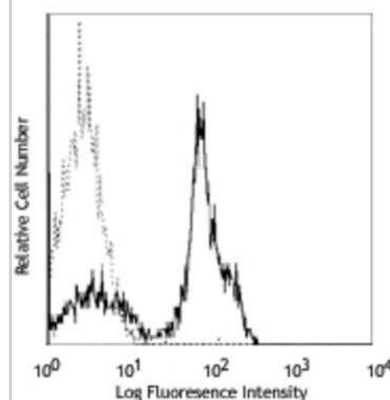
Flow Cytometry: CD2 Antibody (RPA-2.10) - Azide and BSA Free [NBP2-80635] - Analysis using the Allophycocyanin conjugate of NBP2-25200. Staining of normal human peripheral blood cells with Mouse IgG1 kappa Isotype Control APC (open histogram) or Anti-Human CD2 APC (filled histogram). Cells in the lymphocyte gate were used for analysis.



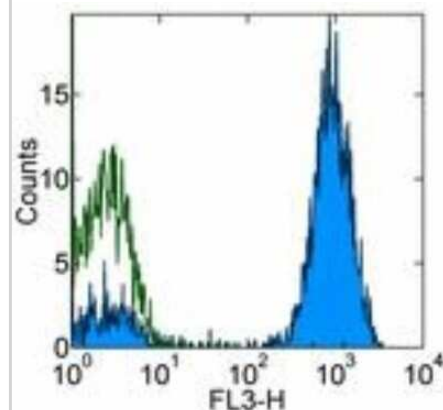
Flow Cytometry: CD2 Antibody (RPA-2.10) - Azide and BSA Free [NBP2-80635] - Analysis using the Biotin conjugate of NBP2-25200. Staining of normal human peripheral blood cells with 0.125 ug of Mouse IgG1 kappa Isotype Control Biotin (open histogram) or 0.125 ug of Anti-Human CD2 Biotin (filled histogram) followed by Streptavidin PE.



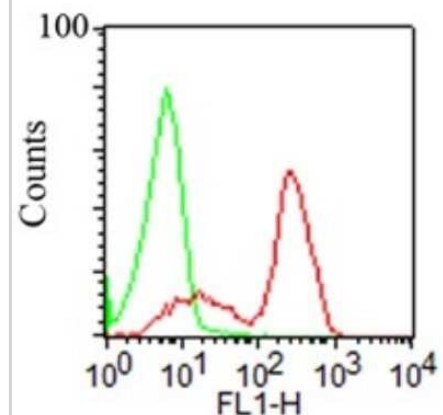
Flow Cytometry: CD2 Antibody (RPA-2.10) - Azide and BSA Free [NBP2-80635] - Analysis using the FITC conjugate of NBP2-25200. Staining of Human peripheral blood lymphocytes with RPA-2.10 FITC.



Flow Cytometry: CD2 Antibody (RPA-2.10) - Azide and BSA Free [NBP2-80635] - Analysis using the PE/Cy5 conjugate of NBP2-25200. Staining of normal human peripheral blood cells with Mouse IgG1 kappa Isotype Control PE-Cy5 (open histogram) or Anti-Human CD2 PE-Cy5 (filled histogram). Total cells were used for analysis.



Flow Cytometry: CD2 Antibody (RPA-2.10) - Azide and BSA Free [NBP2-80635] - Cell surface analysis of CD2 in  $10^6$  human lymphocytes using 0.25 ug of CD2 RPA-2.10 antibody; Shaded histogram represents cells without antibody; green represents isotype control ; red represents CD2 antibody. Goat anti-mouse IgG PE conjugated secondary was used in this test. Image from the standard format of this antibody.





### **Novus Biologicals USA**

10730 E. Briarwood Avenue  
Centennial, CO 80112  
USA  
Phone: 303.730.1950  
Toll Free: 1.888.506.6887  
Fax: 303.730.1966  
nb-customerservice@bio-techne.com

### **Bio-Techne Canada**

21 Canmotor Ave  
Toronto, ON M8Z 4E6  
Canada  
Phone: 905.827.6400  
Toll Free: 855.668.8722  
Fax: 905.827.6402  
canada.inquires@bio-techne.com

### **Bio-Techne Ltd**

19 Barton Lane  
Abingdon Science Park  
Abingdon, OX14 3NB, United Kingdom  
Phone: (44) (0) 1235 529449  
Free Phone: 0800 37 34 15  
Fax: (44) (0) 1235 533420  
info.EMEA@bio-techne.com

### **General Contact Information**

www.novusbio.com  
Technical Support: nb-technical@bio-techne.com  
Orders: nb-customerservice@bio-techne.com  
General: novus@novusbio.com

### **Products Related to NBP2-80635**

---

NBP2-33376H	Blue Marker Antibody (6F4-F6) [HRP]
HAF007	Goat anti-Mouse IgG Secondary Antibody [HRP]
NB7539	Goat anti-Mouse IgG (H+L) Secondary Antibody [HRP]
NBP1-43319-0.5mg	Mouse IgG1 Kappa Isotype Control (P3.6.2.8.1)

---

### **Limitations**

This product is for research use only and is not approved for use in humans or in clinical diagnosis. Primary Antibodies are guaranteed for 1 year from date of receipt.

For more information on our 100% guarantee, please visit [www.novusbio.com/guarantee](http://www.novusbio.com/guarantee)

Earn gift cards/discounts by submitting a review: [www.novusbio.com/reviews/submit/NBP2-80635](http://www.novusbio.com/reviews/submit/NBP2-80635)

Earn gift cards/discounts by submitting a publication using this product:  
[www.novusbio.com/publications](http://www.novusbio.com/publications)

