

Product Datasheet

Rat IL-1 RI ELISA Kit (Colorimetric) NBP2-80382

Unit Size: 1 Kit

Storage is content dependent.

www.novusbio.com



technical@novusbio.com

Protocols, Publications, Related Products, Reviews, Research Tools and Images at:
www.novusbio.com/NBP2-80382

Updated 2/16/2026 v.20.1

Earn rewards for product
reviews and publications.

Submit a publication at www.novusbio.com/publications

Submit a review at www.novusbio.com/reviews/destination/NBP2-80382



NBP2-80382**Rat IL-1 RI ELISA Kit (Colorimetric)**

Product Information	
Unit Size	1 Kit
Concentration	Concentration is not relevant for this product. Please see the protocols for proper use of this product.
Storage	Storage is content dependent.
Conjugate	HRP

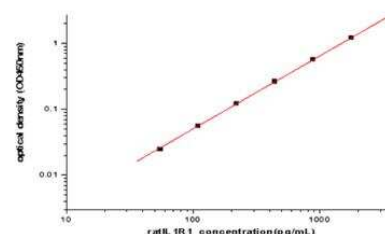
Product Description	
Gene ID	3554
Gene Symbol	IL1R1
Species	Rat
Specificity/Sensitivity	Recognizes both recombinant and natural Rat IL-1 RI.
Kit Components	1. 96 well microplate coated with Capture Antibody, 2. Detection Antibody conjugated to HRP, 3. Standards, 4. Wash Buffer Concentrate, 5. Dilution Buffer Concentrate, 6. Color Reagent A, 7. Color Reagent B, 8. Stop Solution
Standard Curve Range	54.69-3500 pg/ml (example only; lot dependent)
Sensitivity	14.76 pg/ml
Inter Assay	CV% < 8.3 %
Intra Assay	CV% < 3.1
Assay Type	Sandwich ELISA
Spiking Recovery	124-129%
Suitable Sample Type	Serum
Sample Volume	100 ul

Product Application Details	
Applications	ELISA, Sandwich ELISA
Recommended Dilutions	ELISA, Sandwich ELISA

Images

Sandwich ELISA: Rat IL-1 RI ELISA Kit (Colorimetric) [NBP2-80382] - This standard curve is only for demonstration purposes. A standard curve should be generated for each assay.

Concentration (pg/mL)	Zero standard subtracted OD
0	0
54.69	0.025
109.38	0.056
218.75	0.123
437.5	0.266
875	0.575
1750	1.222
3500	2.490





Novus Biologicals USA

10730 E. Briarwood Avenue
Centennial, CO 80112
USA
Phone: 303.730.1950
Toll Free: 1.888.506.6887
Fax: 303.730.1966
nb-customerservice@bio-techne.com

Bio-Techne Canada

21 Canmotor Ave
Toronto, ON M8Z 4E6
Canada
Phone: 905.827.6400
Toll Free: 855.668.8722
Fax: 905.827.6402
canada.inquires@bio-techne.com

Bio-Techne Ltd

19 Barton Lane
Abingdon Science Park
Abingdon, OX14 3NB, United Kingdom
Phone: (44) (0) 1235 529449
Free Phone: 0800 37 34 15
Fax: (44) (0) 1235 533420
info.EMEA@bio-techne.com

General Contact Information

www.novusbio.com
Technical Support: nb-technical@bio-
techne.com
Orders: nb-customerservice@bio-techne.com
General: novus@novusbio.com

Limitations

This product is for research use only and is not approved for use in humans or in clinical diagnosis. ELISA Kits are guaranteed for 6 months from date of receipt.

For more information on our 100% guarantee, please visit www.novusbio.com/guarantee

Earn gift cards/discounts by submitting a review: www.novusbio.com/reviews/submit/NBP2-80382

Earn gift cards/discounts by submitting a publication using this product:
www.novusbio.com/publications

