

# Product Datasheet

## TIM-1/KIM-1/HAVCR Antibody Pair [HRP] NBP2-79614-15Plates

Unit Size: 15 Plates

Storage of components varies. See protocol for specific instructions.

[www.novusbio.com](http://www.novusbio.com)



[technical@novusbio.com](mailto:technical@novusbio.com)

Protocols, Publications, Related Products, Reviews, Research Tools and Images at:  
[www.novusbio.com/NBP2-79614](http://www.novusbio.com/NBP2-79614)

Updated 10/23/2024 v.20.1

Earn rewards for product  
reviews and publications.

Submit a publication at [www.novusbio.com/publications](http://www.novusbio.com/publications)

Submit a review at [www.novusbio.com/reviews/destination/NBP2-79614](http://www.novusbio.com/reviews/destination/NBP2-79614)



**NBP2-79614-15Plates****TIM-1/KIM-1/HAVCR Antibody Pair [HRP]**

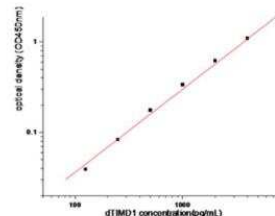
Product Information	
Unit Size	15 Plates
Concentration	Concentration of individual antibodies may be found on the vial label. If unlisted please contact technical services.
Storage	Storage of components varies. See protocol for specific instructions.
Conjugate	HRP

Product Description	
Description	Solid Phase sandwich ELISA for the quantitative determination of Canine TIM-1/KIM-1/HAVCR.
Gene ID	26762
Gene Symbol	HAVCR1
Species	Canine
Specificity/Sensitivity	This solid phase sandwich ELISA utilizes a monoclonal antibody specific for Canine TIM-1/KIM-1/HAVCR.
Kit Components	Rabbit Monoclonal Capture Antibody: (Catalog # <a href="#">NBP2-90824</a> ), Rabbit Monoclonal Detection Antibody (HRP-conjugated): (Catalog # <a href="#">NBP2-90822</a> ), Standard
Standard Curve Range	125-8000 pg/ml (example only; lot dependent)
Sensitivity	125 pg/ml (example only; lot dependent)
Assay Type	Sandwich ELISA
Sample Volume	100 ul

Product Application Details	
Applications	ELISA, Sandwich ELISA
Recommended Dilutions	ELISA, Sandwich ELISA

**Images**

Sandwich ELISA: TIM-1/KIM-1/HAVCR Antibody Pair [HRP] [NBP2-79614] - This standard curve is only for demonstration purposes. A standard curve should be generated for each assay.



Concentration (pg/ml)	Zero standard subtracted OD
0	0
125	0.039
250	0.083
500	0.176
1000	0.336
2000	0.619
4000	1.089
8000	1.757



### **Novus Biologicals USA**

10730 E. Briarwood Avenue  
Centennial, CO 80112  
USA  
Phone: 303.730.1950  
Toll Free: 1.888.506.6887  
Fax: 303.730.1966  
nb-customerservice@bio-techne.com

### **Bio-Techne Canada**

21 Canmotor Ave  
Toronto, ON M8Z 4E6  
Canada  
Phone: 905.827.6400  
Toll Free: 855.668.8722  
Fax: 905.827.6402  
canada.inquires@bio-techne.com

### **Bio-Techne Ltd**

19 Barton Lane  
Abingdon Science Park  
Abingdon, OX14 3NB, United Kingdom  
Phone: (44) (0) 1235 529449  
Free Phone: 0800 37 34 15  
Fax: (44) (0) 1235 533420  
info.EMEA@bio-techne.com

### **General Contact Information**

www.novusbio.com  
Technical Support: nb-technical@bio-techne.com  
Orders: nb-customerservice@bio-techne.com  
General: novus@novusbio.com

### **Products Related to NBP2-79614-15Plates**

---

NB100-56421PEP	TIM-1/KIM-1/HAVCR Antibody Blocking Peptide
210-TA-005	TNF-alpha [Unconjugated]
AF1817	TIM-1/KIM-1/HAVCR Antibody [Unconjugated]
6507-IL-010/CF	IL-4 [Unconjugated]

---

### **Limitations**

This product is for research use only and is not approved for use in humans or in clinical diagnosis. Antibody Pairs are guaranteed for 6 months from date of receipt.

For more information on our 100% guarantee, please visit [www.novusbio.com/guarantee](http://www.novusbio.com/guarantee)

Earn gift cards/discounts by submitting a review: [www.novusbio.com/reviews/submit/NBP2-79614](http://www.novusbio.com/reviews/submit/NBP2-79614)

Earn gift cards/discounts by submitting a publication using this product:  
[www.novusbio.com/publications](http://www.novusbio.com/publications)

