

# Product Datasheet

## IFN-gamma R1/CD119 Antibody Pair [HRP] NBP2-79602-15Plates

Unit Size: 15 Plates

Storage of components varies. See protocol for specific instructions.

[www.novusbio.com](http://www.novusbio.com)



[technical@novusbio.com](mailto:technical@novusbio.com)

Protocols, Publications, Related Products, Reviews, Research Tools and Images at:  
[www.novusbio.com/NBP2-79602](http://www.novusbio.com/NBP2-79602)

Updated 10/23/2024 v.20.1

Earn rewards for product  
reviews and publications.

Submit a publication at [www.novusbio.com/publications](http://www.novusbio.com/publications)

Submit a review at [www.novusbio.com/reviews/destination/NBP2-79602](http://www.novusbio.com/reviews/destination/NBP2-79602)



**NBP2-79602-15Plates****IFN-gamma R1/CD119 Antibody Pair [HRP]**

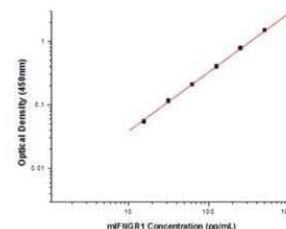
Product Information	
Unit Size	15 Plates
Concentration	Concentration of individual antibodies may be found on the vial label. If unlisted please contact technical services.
Storage	Storage of components varies. See protocol for specific instructions.
Conjugate	HRP

Product Description	
Description	Solid Phase sandwich ELISA for the quantitative determination of Mouse IFN-gamma R1/CD119.
Gene ID	3459
Gene Symbol	IFNGR1
Species	Mouse
Specificity/Sensitivity	This solid phase sandwich ELISA utilizes a monoclonal antibody specific for Mouse IFN-gamma R1/CD119.
Kit Components	Rabbit Monoclonal Capture Antibody: (Catalog # <a href="#">NBP2-90685</a> ), Rabbit Monoclonal Detection Antibody (HRP-conjugated): (Catalog # <a href="#">NBP2-90686</a> ), Standard
Standard Curve Range	15.625-1000 pg/ml (example only; lot dependent)
Sensitivity	15.625 pg/ml (example only; lot dependent)
Assay Type	Sandwich ELISA
Sample Volume	100 ul

Product Application Details	
Applications	ELISA, Sandwich ELISA
Recommended Dilutions	ELISA, Sandwich ELISA

**Images**

Sandwich ELISA: IFN-gamma R1/CD119 Antibody Pair [HRP] [NBP2-79602] - This standard curve is only for demonstration purposes. A standard curve should be generated for each assay.



Concentration ( pg/mL)	Zero standard subtracted OD
0	0
15.63	0.055
31.25	0.116
62.5	0.211
125	0.404
250	0.781
500	1.491
1000	2.623



### **Novus Biologicals USA**

10730 E. Briarwood Avenue  
Centennial, CO 80112  
USA  
Phone: 303.730.1950  
Toll Free: 1.888.506.6887  
Fax: 303.730.1966  
nb-customerservice@bio-techne.com

### **Bio-Techne Canada**

21 Canmotor Ave  
Toronto, ON M8Z 4E6  
Canada  
Phone: 905.827.6400  
Toll Free: 855.668.8722  
Fax: 905.827.6402  
canada.inquires@bio-techne.com

### **Bio-Techne Ltd**

19 Barton Lane  
Abingdon Science Park  
Abingdon, OX14 3NB, United Kingdom  
Phone: (44) (0) 1235 529449  
Free Phone: 0800 37 34 15  
Fax: (44) (0) 1235 533420  
info.EMEA@bio-techne.com

### **General Contact Information**

www.novusbio.com  
Technical Support: nb-technical@bio-techne.com  
Orders: nb-customerservice@bio-techne.com  
General: novus@novusbio.com

### **Products Related to NBP2-79602-15Plates**

---

NBP2-49406PEP	IFN-gamma R1/CD119 Recombinant Protein Antigen
210-TA-005	TNF-alpha [Unconjugated]
MAB6731	IFN-gamma R1/CD119 Antibody (92101) [Unconjugated]
M6000B-1	IL-6 [HRP]

---

### **Limitations**

This product is for research use only and is not approved for use in humans or in clinical diagnosis. Antibody Pairs are guaranteed for 6 months from date of receipt.

For more information on our 100% guarantee, please visit [www.novusbio.com/guarantee](http://www.novusbio.com/guarantee)

Earn gift cards/discounts by submitting a review: [www.novusbio.com/reviews/submit/NBP2-79602](http://www.novusbio.com/reviews/submit/NBP2-79602)

Earn gift cards/discounts by submitting a publication using this product:  
[www.novusbio.com/publications](http://www.novusbio.com/publications)

