

# Product Datasheet

## S100A1 Antibody Pair [HRP] NBP2-79557-15Plates

Unit Size: 15 Plates

Storage of components varies. See protocol for specific instructions.

[www.novusbio.com](http://www.novusbio.com)



[technical@novusbio.com](mailto:technical@novusbio.com)

Protocols, Publications, Related Products, Reviews, Research Tools and Images at:  
[www.novusbio.com/NBP2-79557](http://www.novusbio.com/NBP2-79557)

Updated 10/23/2024 v.20.1

Earn rewards for product  
reviews and publications.

Submit a publication at [www.novusbio.com/publications](http://www.novusbio.com/publications)

Submit a review at [www.novusbio.com/reviews/destination/NBP2-79557](http://www.novusbio.com/reviews/destination/NBP2-79557)



**NBP2-79557-15Plates**

S100A1 Antibody Pair [HRP]

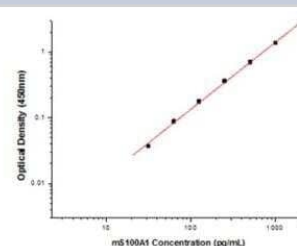
| Product Information |   |
|---------------------|---|
| Unit Size           | 15 Plates   |
| Concentration       | Concentration of individual antibodies may be found on the vial label. If unlisted please contact technical services. |
| Storage             | Storage of components varies. See protocol for specific instructions.   |
| Conjugate           | HRP   |

| Product Description     |   |
|-------------------------|---|
| Description             | Solid Phase sandwich ELISA for the quantitative determination of Mouse S100A1.  |
| Gene ID                 | 6271  |
| Gene Symbol             | S100A1  |
| Species                 | Mouse   |
| Specificity/Sensitivity | This solid phase sandwich ELISA utilizes a monoclonal antibody specific for Mouse S100A1.   |
| Kit Components          | Rabbit Monoclonal Capture Antibody: (Catalog # <a href="#">NBP2-90504</a> ), Rabbit Monoclonal Detection Antibody (HRP-conjugated): (Catalog # <a href="#">NBP2-90505</a> ), Standard |
| Standard Curve Range    | 31.25-2000 pg/ml (example only; lot dependent)  |
| Sensitivity             | 31.25 pg/ml (example only; lot dependent)   |
| Assay Type              | Sandwich ELISA  |
| Sample Volume           | 100 ul  |

| Product Application Details |                       |
|-----------------------------|-----------------------|
| Applications                | ELISA, Sandwich ELISA |
| Recommended Dilutions       | ELISA, Sandwich ELISA |

**Images**

Sandwich ELISA: S100A1 Antibody Pair [HRP] [NBP2-79557] - This standard curve is only for demonstration purposes. A standard curve should be generated for each assay.



| Concentration (pg/mL) | Zero standard subtracted OD |
|-----------------------|-----------------------------|
| 0                     | 0                           |
| 31.25                 | 0.037                       |
| 62.5                  | 0.088                       |
| 125                   | 0.176                       |
| 250                   | 0.36                        |
| 500                   | 0.704                       |
| 1000                  | 1.374                       |
| 2000                  | 2.688                       |



### **Novus Biologicals USA**

10730 E. Briarwood Avenue  
Centennial, CO 80112  
USA  
Phone: 303.730.1950  
Toll Free: 1.888.506.6887  
Fax: 303.730.1966  
nb-customerservice@bio-techne.com

### **Bio-Techne Canada**

21 Canmotor Ave  
Toronto, ON M8Z 4E6  
Canada  
Phone: 905.827.6400  
Toll Free: 855.668.8722  
Fax: 905.827.6402  
canada.inquires@bio-techne.com

### **Bio-Techne Ltd**

19 Barton Lane  
Abingdon Science Park  
Abingdon, OX14 3NB, United Kingdom  
Phone: (44) (0) 1235 529449  
Free Phone: 0800 37 34 15  
Fax: (44) (0) 1235 533420  
info.EMEA@bio-techne.com

### **General Contact Information**

www.novusbio.com  
Technical Support: nb-technical@bio-techne.com  
Orders: nb-customerservice@bio-techne.com  
General: novus@novusbio.com

### **Products Related to NBP2-79557-15Plates**

---

|                  |                                      |
|------------------|--------------------------------------|
| NBP1-72335-0.1mg | Recombinant Mouse S100A1 His Protein |
| AF1356           | CD117/c-kit Antibody [Unconjugated]  |
| NBP1-87103       | S100A1 Antibody                      |
| NB300-141        | GFAP Antibody                        |

---

### **Limitations**

This product is for research use only and is not approved for use in humans or in clinical diagnosis. Antibody Pairs are guaranteed for 6 months from date of receipt.

For more information on our 100% guarantee, please visit [www.novusbio.com/guarantee](http://www.novusbio.com/guarantee)

Earn gift cards/discounts by submitting a review: [www.novusbio.com/reviews/submit/NBP2-79557](http://www.novusbio.com/reviews/submit/NBP2-79557)

Earn gift cards/discounts by submitting a publication using this product:  
[www.novusbio.com/publications](http://www.novusbio.com/publications)

