

# Product Datasheet

## CTLA-4 Antibody Pair [HRP] NBP2-79349-15Plates

Unit Size: 15 Plates

Storage of components varies. See protocol for specific instructions.

[www.novusbio.com](http://www.novusbio.com)



[technical@novusbio.com](mailto:technical@novusbio.com)

Protocols, Publications, Related Products, Reviews, Research Tools and Images at:  
[www.novusbio.com/NBP2-79349](http://www.novusbio.com/NBP2-79349)

Updated 10/23/2024 v.20.1

Earn rewards for product  
reviews and publications.

Submit a publication at [www.novusbio.com/publications](http://www.novusbio.com/publications)

Submit a review at [www.novusbio.com/reviews/destination/NBP2-79349](http://www.novusbio.com/reviews/destination/NBP2-79349)



**NBP2-79349-15Plates****CTLA-4 Antibody Pair [HRP]**

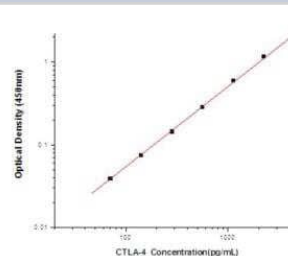
<b>Product Information</b>	
<b>Unit Size</b>	15 Plates
<b>Concentration</b>	Concentration of individual antibodies may be found on the vial label. If unlisted please contact technical services.
<b>Storage</b>	Storage of components varies. See protocol for specific instructions.
<b>Conjugate</b>	HRP

<b>Product Description</b>	
<b>Description</b>	Solid Phase sandwich ELISA for the quantitative determination of Human CTLA-4.
<b>Gene ID</b>	1493
<b>Gene Symbol</b>	CTLA4
<b>Species</b>	Human
<b>Specificity/Sensitivity</b>	This solid phase sandwich ELISA utilizes an antibody specific for Human CTLA-4.
<b>Kit Components</b>	Mouse Monoclonal Capture Antibody, Rabbit Polyclonal Detection Antibody (HRP-conjugated), Standard
<b>Standard Curve Range</b>	70.31-4500 pg/ml (example only; lot dependent)
<b>Sensitivity</b>	70.31 pg/ml (example only; lot dependent)
<b>Assay Type</b>	Sandwich ELISA
<b>Sample Volume</b>	100 ul

<b>Product Application Details</b>	
<b>Applications</b>	ELISA, Sandwich ELISA
<b>Recommended Dilutions</b>	ELISA, Sandwich ELISA

**Images**

Sandwich ELISA: CTLA-4 Antibody Pair [HRP] [NBP2-79349] - This standard curve is only for demonstration purposes. A standard curve should be generated for each assay.



Concentration ( pg/mL )	Zero standard subtracted OD
0	0
70.31	0.039
140.62	0.075
281.25	0.144
562.5	0.286
1125	0.600
2250	1.176
4500	2.035



### **Novus Biologicals USA**

10730 E. Briarwood Avenue  
Centennial, CO 80112  
USA  
Phone: 303.730.1950  
Toll Free: 1.888.506.6887  
Fax: 303.730.1966  
nb-customerservice@bio-techne.com

### **Bio-Techne Canada**

21 Canmotor Ave  
Toronto, ON M8Z 4E6  
Canada  
Phone: 905.827.6400  
Toll Free: 855.668.8722  
Fax: 905.827.6402  
canada.inquires@bio-techne.com

### **Bio-Techne Ltd**

19 Barton Lane  
Abingdon Science Park  
Abingdon, OX14 3NB, United Kingdom  
Phone: (44) (0) 1235 529449  
Free Phone: 0800 37 34 15  
Fax: (44) (0) 1235 533420  
info.EMEA@bio-techne.com

### **General Contact Information**

www.novusbio.com  
Technical Support: nb-technical@bio-techne.com  
Orders: nb-customerservice@bio-techne.com  
General: novus@novusbio.com

### **Products Related to NBP2-79349-15Plates**

---

NBP2-22987	Recombinant Human CTLA-4 His Protein
210-TA-005	TNF-alpha [Unconjugated]
7268-CT-100	CTLA-4 [Unconjugated]
M6000B-1	IL-6 [HRP]

---

### **Limitations**

This product is for research use only and is not approved for use in humans or in clinical diagnosis. Antibody Pairs are guaranteed for 6 months from date of receipt.

For more information on our 100% guarantee, please visit [www.novusbio.com/guarantee](http://www.novusbio.com/guarantee)

Earn gift cards/discounts by submitting a review: [www.novusbio.com/reviews/submit/NBP2-79349](http://www.novusbio.com/reviews/submit/NBP2-79349)

Earn gift cards/discounts by submitting a publication using this product:  
[www.novusbio.com/publications](http://www.novusbio.com/publications)

