

Product Datasheet

TIM-1/KIM-1/HAVCR Antibody Pair [HRP] NBP2-79337-15Plates

Unit Size: 15 Plates

Storage of components varies. See protocol for specific instructions.

www.novusbio.com



technical@novusbio.com

Protocols, Publications, Related Products, Reviews, Research Tools and Images at:
www.novusbio.com/NBP2-79337

Updated 10/23/2024 v.20.1

Earn rewards for product
reviews and publications.

Submit a publication at www.novusbio.com/publications

Submit a review at www.novusbio.com/reviews/destination/NBP2-79337



NBP2-79337-15Plates

TIM-1/KIM-1/HAVCR Antibody Pair [HRP]

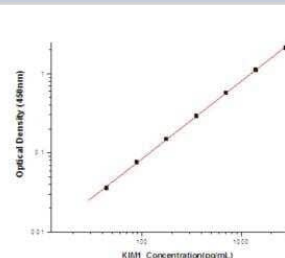
Product Information	
Unit Size	15 Plates
Concentration	Concentration of individual antibodies may be found on the vial label. If unlisted please contact technical services.
Storage	Storage of components varies. See protocol for specific instructions.
Conjugate	HRP

Product Description	
Description	Solid Phase sandwich ELISA for the quantitative determination of Human TIM-1/KIM-1/HAVCR.
Gene ID	26762
Gene Symbol	HAVCR1
Species	Human
Specificity/Sensitivity	This solid phase sandwich ELISA utilizes a monoclonal antibody specific for Human TIM-1/KIM-1/HAVCR.
Kit Components	Mouse Monoclonal Capture Antibody, Mouse Monoclonal Detection Antibody (HRP-conjugated), Standard
Standard Curve Range	43.75-2800 pg/ml (example only; lot dependent)
Sensitivity	43.75 pg/ml (example only; lot dependent)
Assay Type	Sandwich ELISA
Sample Volume	100 ul

Product Application Details	
Applications	ELISA, Sandwich ELISA
Recommended Dilutions	ELISA, Sandwich ELISA

Images

Sandwich ELISA: TIM-1/KIM-1/HAVCR Antibody Pair [HRP] [NBP2-79337] - This standard curve is only for demonstration purposes. A standard curve should be generated for each assay.



Concentration (pg/mL)	Zero standard subtracted OD
0	0
43.75	0.036
87.5	0.076
175	0.149
350	0.292
700	0.575
1400	1.119
2800	2.110



Novus Biologicals USA

10730 E. Briarwood Avenue
Centennial, CO 80112
USA
Phone: 303.730.1950
Toll Free: 1.888.506.6887
Fax: 303.730.1966
nb-customerservice@bio-techne.com

Bio-Techne Canada

21 Canmotor Ave
Toronto, ON M8Z 4E6
Canada
Phone: 905.827.6400
Toll Free: 855.668.8722
Fax: 905.827.6402
canada.inquires@bio-techne.com

Bio-Techne Ltd

19 Barton Lane
Abingdon Science Park
Abingdon, OX14 3NB, United Kingdom
Phone: (44) (0) 1235 529449
Free Phone: 0800 37 34 15
Fax: (44) (0) 1235 533420
info.EMEA@bio-techne.com

General Contact Information

www.novusbio.com
Technical Support: nb-technical@bio-techne.com
Orders: nb-customerservice@bio-techne.com
General: novus@novusbio.com

Products Related to NBP2-79337-15Plates

NB100-56421PEP	TIM-1/KIM-1/HAVCR Antibody Blocking Peptide
210-TA-005	TNF-alpha [Unconjugated]
AF1817	TIM-1/KIM-1/HAVCR Antibody [Unconjugated]
6507-IL-010/CF	IL-4 [Unconjugated]

Limitations

This product is for research use only and is not approved for use in humans or in clinical diagnosis. Antibody Pairs are guaranteed for 6 months from date of receipt.

For more information on our 100% guarantee, please visit www.novusbio.com/guarantee

Earn gift cards/discounts by submitting a review: www.novusbio.com/reviews/submit/NBP2-79337

Earn gift cards/discounts by submitting a publication using this product:
www.novusbio.com/publications

