

Product Datasheet

Serpin G1/C1 Inhibitor Antibody Pair [HRP] NBP2-79331-15Plates

Unit Size: 15 Plates

Storage of components varies. See protocol for specific instructions.

www.novusbio.com



technical@novusbio.com

Protocols, Publications, Related Products, Reviews, Research Tools and Images at:
www.novusbio.com/NBP2-79331

Updated 10/23/2024 v.20.1

Earn rewards for product
reviews and publications.

Submit a publication at www.novusbio.com/publications

Submit a review at www.novusbio.com/reviews/destination/NBP2-79331



NBP2-79331-15Plates**Serpin G1/C1 Inhibitor Antibody Pair [HRP]**

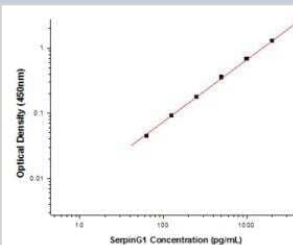
| Product Information | |
|----------------------------|---|
| Unit Size | 15 Plates |
| Concentration | Concentration of individual antibodies may be found on the vial label. If unlisted please contact technical services. |
| Storage | Storage of components varies. See protocol for specific instructions. |
| Conjugate | HRP |

| Product Description | |
|--------------------------------|---|
| Description | Solid Phase sandwich ELISA for the quantitative determination of Human Serpin G1/C1 Inhibitor. |
| Gene ID | 710 |
| Gene Symbol | SERPING1 |
| Species | Human |
| Specificity/Sensitivity | This solid phase sandwich ELISA utilizes a monoclonal antibody specific for Human Serpin G1/C1 Inhibitor. |
| Kit Components | Mouse Monoclonal Capture Antibody, Rabbit Monoclonal Detection Antibody (HRP-conjugated): (Catalog # NBP2-89738), Standard |
| Standard Curve Range | 62.5-4000 pg/ml (example only; lot dependent) |
| Sensitivity | 62.5 pg/ml (example only; lot dependent) |
| Assay Type | Sandwich ELISA |
| Sample Volume | 100 ul |

| Product Application Details | |
|------------------------------------|-----------------------|
| Applications | ELISA, Sandwich ELISA |
| Recommended Dilutions | ELISA, Sandwich ELISA |

Images

Sandwich ELISA: Serpin G1/C1 Inhibitor Antibody Pair [HRP] [NBP2-79331] - This standard curve is only for demonstration purposes. A standard curve should be generated for each assay.



| Concentration (pg/mL) | Zero standard subtracted OD |
|------------------------|-----------------------------|
| 0 | 0 |
| 62.5 | 0.045 |
| 125 | 0.092 |
| 250 | 0.178 |
| 500 | 0.360 |
| 1000 | 0.691 |
| 2000 | 1.296 |
| 4000 | 2.318 |



Novus Biologicals USA

10730 E. Briarwood Avenue
Centennial, CO 80112
USA
Phone: 303.730.1950
Toll Free: 1.888.506.6887
Fax: 303.730.1966
nb-customerservice@bio-techne.com

Bio-Techne Canada

21 Canmotor Ave
Toronto, ON M8Z 4E6
Canada
Phone: 905.827.6400
Toll Free: 855.668.8722
Fax: 905.827.6402
canada.inquires@bio-techne.com

Bio-Techne Ltd

19 Barton Lane
Abingdon Science Park
Abingdon, OX14 3NB, United Kingdom
Phone: (44) (0) 1235 529449
Free Phone: 0800 37 34 15
Fax: (44) (0) 1235 533420
info.EMEA@bio-techne.com

General Contact Information

www.novusbio.com
Technical Support: nb-technical@bio-techne.com
Orders: nb-customerservice@bio-techne.com
General: novus@novusbio.com

Products Related to NBP2-79331-15Plates

| | |
|---------------|--|
| NBP2-33536PEP | Serpin G1/C1 Inhibitor Recombinant Protein Antigen |
| NB200-540 | Complement C3 Antibody (11H9) - BSA Free |
| NBP1-32478 | Serpin G1/C1 Inhibitor Antibody |
| AF1513 | ACE/CD143 Antibody [Unconjugated] |

Limitations

This product is for research use only and is not approved for use in humans or in clinical diagnosis. Antibody Pairs are guaranteed for 6 months from date of receipt.

For more information on our 100% guarantee, please visit www.novusbio.com/guarantee

Earn gift cards/discounts by submitting a review: www.novusbio.com/reviews/submit/NBP2-79331

Earn gift cards/discounts by submitting a publication using this product:
www.novusbio.com/publications

