

Product Datasheet

Brain Frontal Lobe Tissue Slides (Progressive Supranuclear Palsy)- Frozen NBP2-77703

Unit Size: 5 Slides

Store at -70C. Avoid freeze-thaw cycles.

www.novusbio.com



technical@novusbio.com

Protocols, Publications, Related Products, Reviews, Research Tools and Images at:
www.novusbio.com/NBP2-77703

Updated 10/23/2024 v.20.1

Earn rewards for product
reviews and publications.

Submit a publication at www.novusbio.com/publications

Submit a review at www.novusbio.com/reviews/destination/NBP2-77703



NBP2-77703**Brain Frontal Lobe Tissue Slides (Progressive Supranuclear Palsy)- Frozen**

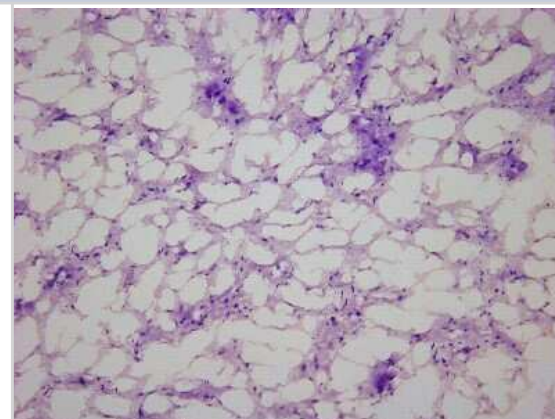
Product Information	
Unit Size	5 Slides
Concentration	Concentration is not relevant for this product. Please see the protocols for proper use of this product.
Storage	Store at -70C. Avoid freeze-thaw cycles.

Product Description	
Description	<p>Each slide contains a single human adult tissue section, 5-10 um thickness that is mounted on a positively charged glass slide and fixed by cold acetone. The slides included in this package are adjacent/serial sections of brain frontal lobe tissue from one donor. Tissue was snap frozen in liquid nitrogen immediately after excision and embedded in OCT. This product can be used for both immunohistochemistry and in-situ hybridization, especially for antibodies that don't recognize paraffin embedded tissue. At least one of the tissue slides from each lot was stained with H & E to ensure the quality (not included in the package).</p> <p>Samples are IRB-approved from consented donors. Documentation on tissues' clinical histories may be available upon request. Donor information is also available upon request. Please contact nb-technical@bio-techne.com for any questions or requests.</p> <p>Please contact nb-custom@bio-techne.com for all custom requests related to this product.</p>
Species	Human
Notes	Donor information available upon request
Lysate Type	Tissue
Lysate Tissue	Brain
Lysate Tissue Condition	Progressive Supranuclear Palsy

Product Application Details	
Applications	Immunohistochemistry, Immunohistochemistry-Frozen, In-situ Hybridization
Recommended Dilutions	Immunohistochemistry, Immunohistochemistry-Frozen, In-situ Hybridization

Images

Hematoxylin & Eosin Stain: Brain Frontal Lobe Tissue Slides (Progressive Supranuclear Palsy) [NBP2-77703] - Tissue: Human Brain (Frontal Lobe), Pathology: Progressive Supranuclear Palsy





Novus Biologicals USA

10730 E. Briarwood Avenue
Centennial, CO 80112
USA
Phone: 303.730.1950
Toll Free: 1.888.506.6887
Fax: 303.730.1966
nb-customerservice@bio-techne.com

Bio-Techne Canada

21 Canmotor Ave
Toronto, ON M8Z 4E6
Canada
Phone: 905.827.6400
Toll Free: 855.668.8722
Fax: 905.827.6402
canada.inquires@bio-techne.com

Bio-Techne Ltd

19 Barton Lane
Abingdon Science Park
Abingdon, OX14 3NB, United Kingdom
Phone: (44) (0) 1235 529449
Free Phone: 0800 37 34 15
Fax: (44) (0) 1235 533420
info.EMEA@bio-techne.com

General Contact Information

www.novusbio.com
Technical Support: nb-technical@bio-
techne.com
Orders: nb-customerservice@bio-techne.com
General: novus@novusbio.com

Products Related to NBP2-77703

NB820-59186	Human Brain Frontal Lobe Whole Tissue Lysate (Adult Whole Normal)
-------------	---

Limitations

This product is for research use only and is not approved for use in humans or in clinical diagnosis. Slides are guaranteed for 3 months from date of receipt.

For more information on our 100% guarantee, please visit www.novusbio.com/guarantee

Earn gift cards/discounts by submitting a review: www.novusbio.com/reviews/submit/NBP2-77703

Earn gift cards/discounts by submitting a publication using this product:
www.novusbio.com/publications

