

# Product Datasheet

## Brain Medulla Oblongata Tissue Slides (Parkinson's)- Frozen NBP2-77693

Unit Size: 5 Slides

Store at -70C. Avoid freeze-thaw cycles.

[www.novusbio.com](http://www.novusbio.com)



[technical@novusbio.com](mailto:technical@novusbio.com)

### Publications: 1

Protocols, Publications, Related Products, Reviews, Research Tools and Images at:  
[www.novusbio.com/NBP2-77693](http://www.novusbio.com/NBP2-77693)

Updated 10/23/2024 v.20.1

Earn rewards for product  
reviews and publications.

Submit a publication at [www.novusbio.com/publications](http://www.novusbio.com/publications)

Submit a review at [www.novusbio.com/reviews/destination/NBP2-77693](http://www.novusbio.com/reviews/destination/NBP2-77693)



**NBP2-77693****Brain Medulla Oblongata Tissue Slides (Parkinson's)- Frozen**

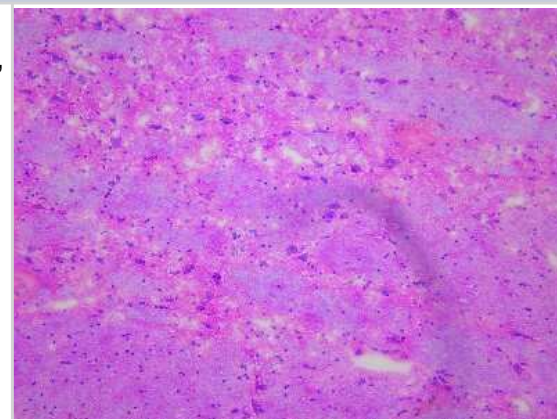
<b>Product Information</b>	
<b>Unit Size</b>	5 Slides
<b>Concentration</b>	Concentration is not relevant for this product. Please see the protocols for proper use of this product.
<b>Storage</b>	Store at -70C. Avoid freeze-thaw cycles.

<b>Product Description</b>	
<b>Description</b>	<p>Each slide contains a single human adult tissue section, 5-10 um thickness that is mounted on a positively charged glass slide and fixed by cold acetone. The slides included in this package are adjacent/serial sections of brain medulla oblongata tissue from one donor. Tissue was snap frozen in liquid nitrogen immediately after excision and embedded in OCT. This product can be used for both immunohistochemistry and in-situ hybridization, especially for antibodies that don't recognize paraffin embedded tissue. At least one of the tissue slides from each lot was stained with H &amp; E to ensure the quality (not included in the package).</p> <p>Samples are IRB-approved from consented donors. Documentation on tissues' clinical histories may be available upon request. Donor information is also available upon request. Please contact <a href="mailto:nb-technical@bio-techne.com">nb-technical@bio-techne.com</a> for any questions or requests.</p> <p>Please contact <a href="mailto:nb-custom@bio-techne.com">nb-custom@bio-techne.com</a> for all custom requests related to this product.</p>
<b>Species</b>	Human
<b>Notes</b>	Donor information available upon request
<b>Lysate Type</b>	Tissue
<b>Lysate Tissue</b>	Brain
<b>Lysate Tissue Condition</b>	Parkinson's

<b>Product Application Details</b>	
<b>Applications</b>	Immunohistochemistry, Immunohistochemistry-Frozen, In-situ Hybridization
<b>Recommended Dilutions</b>	Immunohistochemistry, Immunohistochemistry-Frozen, In-situ Hybridization

**Images**

Hematoxylin & Eosin Stain: Brain Medulla Oblongata Tissue Slides (Parkinson's) [NBP2-77693] - Tissue: Human Brain (Medulla Oblongata), Pathology: Parkinson's Disease



## Publications

Cara-Fuentes G, Andres-Hernando A, Bauer C et al. Pulmonary Surfactants and the Respiratory-Renal Connection in Steroid Sensitive Nephrotic Syndrome of Childhood iScience 2022-06-01 [PMID: 35847557]



### Novus Biologicals USA

10730 E. Briarwood Avenue  
Centennial, CO 80112  
USA

Phone: 303.730.1950

Toll Free: 1.888.506.6887

Fax: 303.730.1966

[nb-customerservice@bio-techne.com](mailto:nb-customerservice@bio-techne.com)

### Bio-Techne Canada

21 Canmotor Ave  
Toronto, ON M8Z 4E6  
Canada

Phone: 905.827.6400

Toll Free: 855.668.8722

Fax: 905.827.6402

[canada.inquires@bio-techne.com](mailto:canada.inquires@bio-techne.com)

### Bio-Techne Ltd

19 Barton Lane  
Abingdon Science Park  
Abingdon, OX14 3NB, United Kingdom

Phone: (44) (0) 1235 529449

Free Phone: 0800 37 34 15

Fax: (44) (0) 1235 533420

[info.EMEA@bio-techne.com](mailto:info.EMEA@bio-techne.com)

### General Contact Information

[www.novusbio.com](http://www.novusbio.com)

Technical Support: [nb-technical@bio-techne.com](mailto:nb-technical@bio-techne.com)

Orders: [nb-customerservice@bio-techne.com](mailto:nb-customerservice@bio-techne.com)

General: [novus@novusbio.com](mailto:novus@novusbio.com)

## Products Related to NBP2-77693

NB820-59399

Human Brain Medulla Oblongata Whole Tissue Lysate (Adult Whole Multiple Sclerosis)

### Limitations

This product is for research use only and is not approved for use in humans or in clinical diagnosis. Slides are guaranteed for 3 months from date of receipt.

For more information on our 100% guarantee, please visit [www.novusbio.com/guarantee](http://www.novusbio.com/guarantee)

Earn gift cards/discounts by submitting a review: [www.novusbio.com/reviews/submit/NBP2-77693](http://www.novusbio.com/reviews/submit/NBP2-77693)

Earn gift cards/discounts by submitting a publication using this product:  
[www.novusbio.com/publications](http://www.novusbio.com/publications)

