

Product Datasheet

Brain Amygdala Tissue Slides (Parkinson's)- Frozen NBP2-77690

Unit Size: 5 Slides

Store at -70C. Avoid freeze-thaw cycles.

www.novusbio.com



technical@novusbio.com

Protocols, Publications, Related Products, Reviews, Research Tools and Images at:
www.novusbio.com/NBP2-77690

Updated 10/23/2024 v.20.1

Earn rewards for product
reviews and publications.

Submit a publication at www.novusbio.com/publications

Submit a review at www.novusbio.com/reviews/destination/NBP2-77690



NBP2-77690**Brain Amygdala Tissue Slides (Parkinson's)- Frozen**

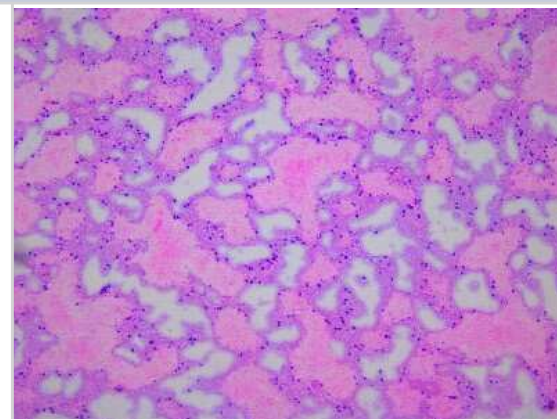
| Product Information | |
|----------------------------|--|
| Unit Size | 5 Slides |
| Concentration | Concentration is not relevant for this product. Please see the protocols for proper use of this product. |
| Storage | Store at -70C. Avoid freeze-thaw cycles. |

| Product Description | |
|--------------------------------|---|
| Description | <p>Each slide contains a single human adult tissue section, 5-10 um thickness that is mounted on a positively charged glass slide and fixed by cold acetone. The slides included in this package are adjacent/serial sections of brain amygdala tissue from one donor. Tissue was snap frozen in liquid nitrogen immediately after excision and embedded in OCT. This product can be used for both immunohistochemistry and in-situ hybridization, especially for antibodies that don't recognize paraffin embedded tissue. At least one of the tissue slides from each lot was stained with H & E to ensure the quality (not included in the package).</p> <p>Samples are IRB-approved from consented donors. Documentation on tissues' clinical histories may be available upon request. Donor information is also available upon request. Please contact nb-technical@bio-techne.com for any questions or requests.</p> <p>Please contact nb-custom@bio-techne.com for all custom requests related to this product.</p> |
| Species | Human |
| Notes | Donor information available upon request |
| Lysate Type | Tissue |
| Lysate Tissue | Brain |
| Lysate Tissue Condition | Parkinson's |

| Product Application Details | |
|------------------------------------|--|
| Applications | Immunohistochemistry, Immunohistochemistry-Frozen, In-situ Hybridization |
| Recommended Dilutions | Immunohistochemistry, Immunohistochemistry-Frozen, In-situ Hybridization |

Images

Hematoxylin & Eosin Stain: Brain Amygdala Tissue Slides (Parkinson's) [NBP2-77690] - Tissue: Human Brain (Amygdala), Pathology: Parkinson's Disease





Novus Biologicals USA

10730 E. Briarwood Avenue
Centennial, CO 80112
USA
Phone: 303.730.1950
Toll Free: 1.888.506.6887
Fax: 303.730.1966
nb-customerservice@bio-techne.com

Bio-Techne Canada

21 Canmotor Ave
Toronto, ON M8Z 4E6
Canada
Phone: 905.827.6400
Toll Free: 855.668.8722
Fax: 905.827.6402
canada.inquires@bio-techne.com

Bio-Techne Ltd

19 Barton Lane
Abingdon Science Park
Abingdon, OX14 3NB, United Kingdom
Phone: (44) (0) 1235 529449
Free Phone: 0800 37 34 15
Fax: (44) (0) 1235 533420
info.EMEA@bio-techne.com

General Contact Information

www.novusbio.com
Technical Support: nb-technical@bio-techne.com
Orders: nb-customerservice@bio-techne.com
General: novus@novusbio.com

Products Related to NBP2-77690

| | |
|-------------|--|
| NB820-59364 | Human Brain Amygdala Whole Tissue Lysate (Adult Whole Alzheimer's) |
|-------------|--|

Limitations

This product is for research use only and is not approved for use in humans or in clinical diagnosis. Slides are guaranteed for 3 months from date of receipt.

For more information on our 100% guarantee, please visit www.novusbio.com/guarantee

Earn gift cards/discounts by submitting a review: www.novusbio.com/reviews/submit/NBP2-77690

Earn gift cards/discounts by submitting a publication using this product:
www.novusbio.com/publications

