

Product Datasheet

N6-methyladenosine (m6A) Antibody (RM362) **NBP2-77425-50ul**

Unit Size: 50 ul

Store at -20C. Avoid freeze-thaw cycles.

www.novusbio.com



technical@novusbio.com

Protocols, Publications, Related Products, Reviews, Research Tools and Images at:
www.novusbio.com/NBP2-77425

Updated 2/24/2026 v.20.1

**Earn rewards for product
reviews and publications.**

Submit a publication at www.novusbio.com/publications

Submit a review at www.novusbio.com/reviews/destination/NBP2-77425



NBP2-77425-50ul**N6-methyladenosine (m6A) Antibody (RM362)**

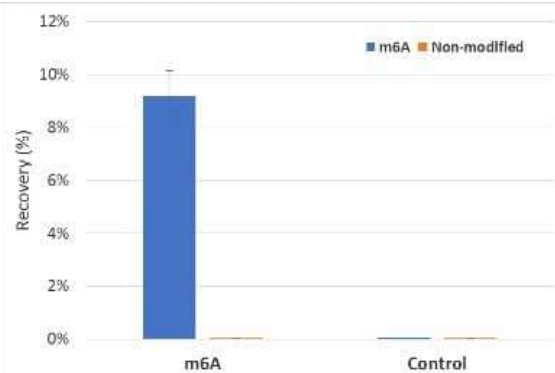
Product Information	
Unit Size	50 ul
Concentration	1 mg/ml
Storage	Store at -20C. Avoid freeze-thaw cycles.
Clonality	Monoclonal
Clone	RM362
Preservative	0.09% Sodium Azide
Isotype	IgG
Purity	Protein A purified
Buffer	50% Glycerol/PBS, 1% BSA

Product Description	
Description	Novus Biologicals Rabbit N6-methyladenosine (m6A) Antibody (RM362) (NBP2-77425) is a recombinant monoclonal antibody validated for use in ELISA and IP. All Novus Biologicals antibodies are covered by our 100% guarantee.
Host	Rabbit
Species	Human
Specificity/Sensitivity	This antibody reacts to N6-Methyladenosine (m6A) in both RNA and DNA. No cross reactivity with non-methylated adenosine.
Immunogen	BSA-conjugated N6-methyladenosine (m6A)

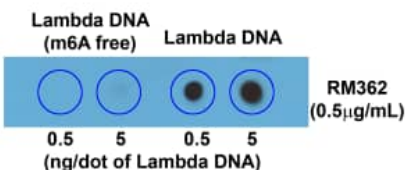
Product Application Details	
Applications	Dot Blot, ELISA, Immunoprecipitation
Recommended Dilutions	ELISA 0.1 ug/ml - 3 ug/ml, Immunoprecipitation, Dot Blot 0.5 ug/ml - 2 ug/ml
Application Notes	Can be used in Methylated RNA Immunoprecipitation (recommended dilution 0.2 - 5 ug/ml)

Images

Immunoprecipitation: N6-methyladenosine (m6A) Antibody (RM362) [NBP2-77425] - MeRIP was performed using M6A and control RNA from NEB (E1610). Antibodies (NBP2-77425 and NBP2-77399) were mixed for a short time, with Protein A beads before the addition of m6A labelled and non- labelled RNA (in equal amounts). Captured RNA was then washed, eluted and run through RT-PCR. Resulting cDNA was then analyzed using Realtime PCR with specific probes to m6A labelled and un-labelled sequences.



Dot Blot: N6-methyladenosine (m6A) Antibody (RM362) [NBP2-77425] - Dot blot of Lambda DNA without or with m6A, using NBP2-77425. The membrane was pre-spotted with lambda DNA. m6A-free DNA was isolated from bacteriophage lambda grown in an E. coli host-deficient in adenine methylase (dam-).





Novus Biologicals USA

10730 E. Briarwood Avenue
Centennial, CO 80112
USA
Phone: 303.730.1950
Toll Free: 1.888.506.6887
Fax: 303.730.1966
nb-customerservice@bio-techne.com

Bio-Techne Canada

21 Canmotor Ave
Toronto, ON M8Z 4E6
Canada
Phone: 905.827.6400
Toll Free: 855.668.8722
Fax: 905.827.6402
canada.inquires@bio-techne.com

Bio-Techne Ltd

19 Barton Lane
Abingdon Science Park
Abingdon, OX14 3NB, United Kingdom
Phone: (44) (0) 1235 529449
Free Phone: 0800 37 34 15
Fax: (44) (0) 1235 533420
info.EMEA@bio-techne.com

General Contact Information

www.novusbio.com
Technical Support: nb-technical@bio-techne.com
Orders: nb-customerservice@bio-techne.com
General: novus@novusbio.com

Products Related to NBP2-77425-50ul

HAF008	Goat anti-Rabbit IgG Secondary Antibody [HRP]
NB7160	Goat anti-Rabbit IgG (H+L) Secondary Antibody [HRP]
NBP2-24891	Rabbit IgG Isotype Control

Limitations

This product is for research use only and is not approved for use in humans or in clinical diagnosis. Primary Antibodies are guaranteed for 1 year from date of receipt.

For more information on our 100% guarantee, please visit www.novusbio.com/guarantee

Earn gift cards/discounts by submitting a review: www.novusbio.com/reviews/submit/NBP2-77425

Earn gift cards/discounts by submitting a publication using this product:
www.novusbio.com/publications

