

Product Datasheet

Acetyl-Lysine Antibody (RM101) NBP2-77397

Unit Size: 100 ug

Store at -20C. Avoid freeze-thaw cycles.

www.novusbio.com



technical@novusbio.com

Protocols, Publications, Related Products, Reviews, Research Tools and Images at:
www.novusbio.com/NBP2-77397

Updated 2/24/2026 v.20.1

Earn rewards for product
reviews and publications.

Submit a publication at www.novusbio.com/publications

Submit a review at www.novusbio.com/reviews/destination/NBP2-77397



NBP2-77397**Acetyl-Lysine Antibody (RM101)**

Product Information	
Unit Size	100 ug
Concentration	1 mg/ml
Storage	Store at -20C. Avoid freeze-thaw cycles.
Clonality	Monoclonal
Clone	RM101
Preservative	0.09% Sodium Azide
Isotype	IgG
Purity	Protein A purified
Buffer	50% Glycerol/PBS, 1% BSA

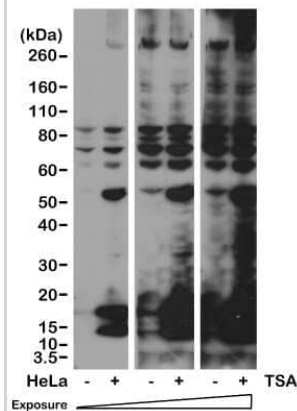
Product Description	
Description	Novus Biologicals Rabbit Acetyl-Lysine Antibody (RM101) (NBP2-77397) is a recombinant monoclonal antibody validated for use in IHC, WB, ELISA, Flow, ICC/IF, IP and ChIP. All Novus Biologicals antibodies are covered by our 100% guarantee.
Host	Rabbit
Species	All Species
Specificity/Sensitivity	This antibody reacts to lysine-acetylated proteins. No cross reactivity with nonacetylated lysine, and lysine with other modification.
Immunogen	Acetyl lysine -BSA

Product Application Details	
Applications	Western Blot, ELISA, Flow Cytometry, Immunocytochemistry/ Immunofluorescence, Immunohistochemistry, Immunoprecipitation, Chromatin Immunoprecipitation (ChIP)
Recommended Dilutions	Western Blot 1:500 -1:2000, Flow Cytometry 1:10 - 1:1000, ELISA 1:100 - 1:2000, Immunohistochemistry 1:100 - 1:500, Immunocytochemistry/ Immunofluorescence 1:100 - 1:500, Immunoprecipitation 1:100-1:500, Chromatin Immunoprecipitation (ChIP) 1:100-1:500

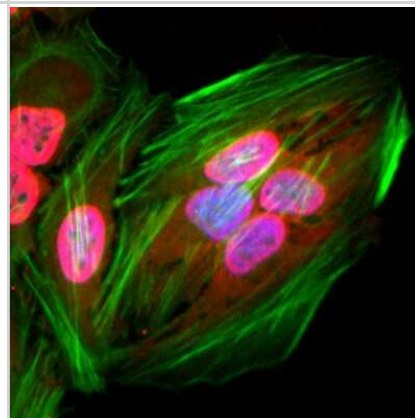


Images

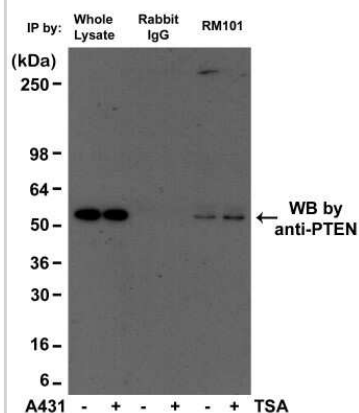
Western Blot: Acetyl-Lysine Antibody (RM101) [NBP2-77397] - Analysis of HeLa cells nontreated or treated with Trichostatin A (TSA), using NBP2-77397.



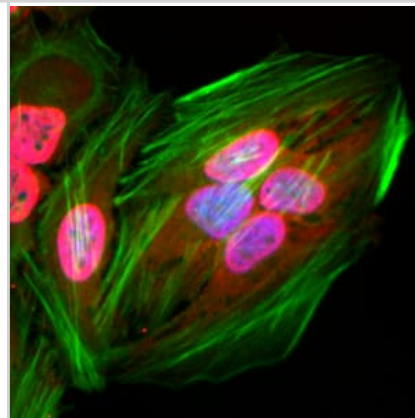
Immunocytochemistry/Immunofluorescence: Acetyl-Lysine Antibody (RM101) [NBP2-77397] - Immunocytochemical staining of HeLa cells using anti-Acetyl-Lysine antibody (NBP2-77397, red). Actin filaments was labeled with fluorescein phalloidin (green), and nucleus stained with DAPI (blue).



Immunoprecipitation: Acetyl-Lysine Antibody (RM101) [NBP2-77397] - A431 cell lysates, using NBP2-77397, was blotted with anti-PTEN mouse monoclonal antibody.



Immunocytochemistry/ Immunofluorescence: Acetyl-Lysine Antibody (RM101) - Azide and BSA Free [NBP2-77397] - Immunocytochemical staining of HeLa cells using Clone RM101 (red). Actin filaments was labeled with fluorescein phalloidin (green), and nucleus stained with DAPI (blue).





Novus Biologicals USA

10730 E. Briarwood Avenue
Centennial, CO 80112
USA
Phone: 303.730.1950
Toll Free: 1.888.506.6887
Fax: 303.730.1966
nb-customerservice@bio-techne.com

Bio-Techne Canada

21 Canmotor Ave
Toronto, ON M8Z 4E6
Canada
Phone: 905.827.6400
Toll Free: 855.668.8722
Fax: 905.827.6402
canada.inquires@bio-techne.com

Bio-Techne Ltd

19 Barton Lane
Abingdon Science Park
Abingdon, OX14 3NB, United Kingdom
Phone: (44) (0) 1235 529449
Free Phone: 0800 37 34 15
Fax: (44) (0) 1235 533420
info.EMEA@bio-techne.com

General Contact Information

www.novusbio.com
Technical Support: nb-technical@bio-techne.com
Orders: nb-customerservice@bio-techne.com
General: novus@novusbio.com

Products Related to NBP2-77397

NBP2-33376H	Blue Marker Antibody (6F4-F6) [HRP]
HAF008	Goat anti-Rabbit IgG Secondary Antibody [HRP]
NB7160	Goat anti-Rabbit IgG (H+L) Secondary Antibody [HRP]
NBP2-24891	Rabbit IgG Isotype Control

Limitations

This product is for research use only and is not approved for use in humans or in clinical diagnosis. Primary Antibodies are guaranteed for 1 year from date of receipt.

For more information on our 100% guarantee, please visit www.novusbio.com/guarantee

Earn gift cards/discounts by submitting a review: www.novusbio.com/reviews/submit/NBP2-77397

Earn gift cards/discounts by submitting a publication using this product:
www.novusbio.com/publications

