

Product Datasheet

BANF1 Antibody (JG40-43) NBP2-76978

Unit Size: 100 ul

Store at 4C short term. Aliquot and store at -20C long term. Avoid freeze-thaw cycles.

www.novusbio.com



technical@novusbio.com

Protocols, Publications, Related Products, Reviews, Research Tools and Images at:
www.novusbio.com/NBP2-76978

Updated 2/24/2026 v.20.1

Earn rewards for product
reviews and publications.

Submit a publication at www.novusbio.com/publications

Submit a review at www.novusbio.com/reviews/destination/NBP2-76978



NBP2-76978

BANF1 Antibody (JG40-43)

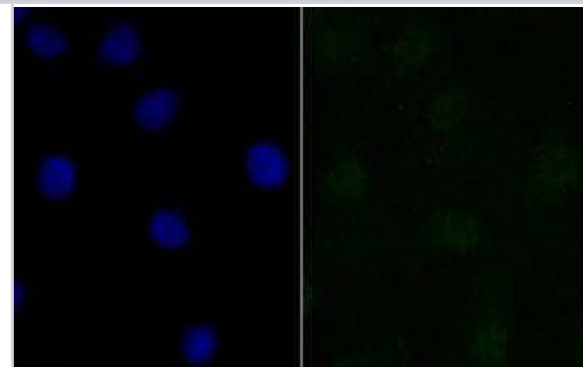
Product Information	
Unit Size	100 ul
Concentration	1 mg/ml
Storage	Store at 4C short term. Aliquot and store at -20C long term. Avoid freeze-thaw cycles.
Clonality	Monoclonal
Clone	JG40-43
Preservative	0.05% Sodium Azide
Isotype	IgG
Purity	Protein A purified
Buffer	TBS (pH7.4), 0.05% BSA, 40% Glycerol
Target Molecular Weight	10 kDa

Product Description	
Description	Novus Biologicals Rabbit BANF1 Antibody (JG40-43) (NBP2-76978) is a recombinant monoclonal antibody validated for use in IHC, WB, Flow and ICC/IF. All Novus Biologicals antibodies are covered by our 100% guarantee.
Host	Rabbit
Gene ID	8815
Gene Symbol	BANF1
Species	Human, Mouse, Rat
Immunogen	Synthetic peptide within Human BANF1 aa 1-50 / 89. (SwissProt: O75531 Human; SwissProt: O54962 Mouse; SwissProt: Q9R1T1 Rat)

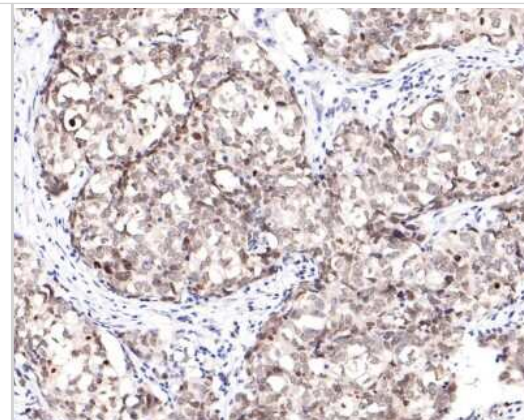
Product Application Details	
Applications	Western Blot, Immunohistochemistry-Paraffin, Flow Cytometry, Immunocytochemistry/ Immunofluorescence, Immunohistochemistry
Recommended Dilutions	Western Blot 1:500, Flow Cytometry 1:50-1:100, Immunohistochemistry, Immunocytochemistry/ Immunofluorescence 1:50-1:100, Immunohistochemistry-Paraffin 1:50-1:500

Images

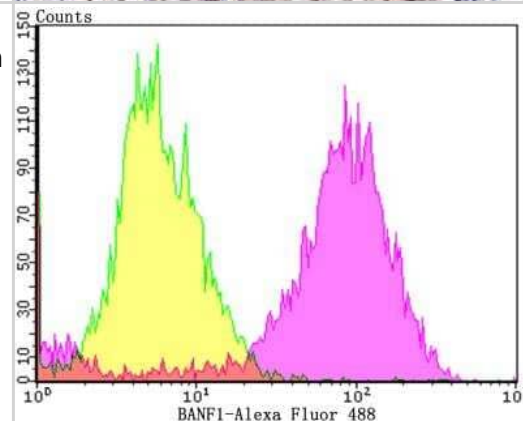
Immunocytochemistry/Immunofluorescence: BANF1 Antibody (JG40-43) [NBP2-76978] - ICC staining BANF1 in A549 cells (green). The nuclear counter stain is DAPI (blue). Cells were fixed in paraformaldehyde, permeabilised with 0.25% Triton X100/PBS.



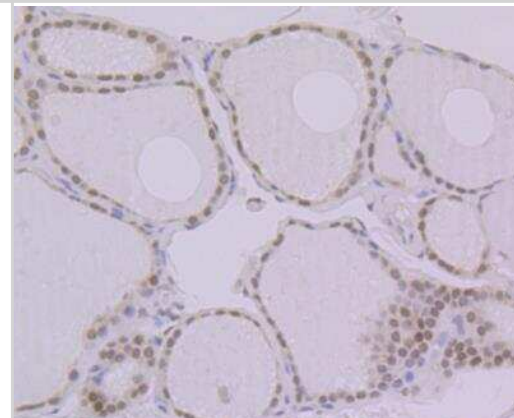
Immunohistochemistry-Paraffin: BANF1 Antibody (JG40-43) [NBP2-76978] - Analysis of paraffin-embedded human breast carcinoma tissue using anti-BANF1 antibody. The section was pre-treated using heat mediated antigen retrieval with sodium citrate buffer (pH 6.0) for 20 minutes. The tissues were blocked in 1% BSA for 30 minutes at room temperature, washed with ddH₂O and PBS, and then probed with the primary antibody (1/400) for 30 minutes at room temperature. The detection was performed using an HRP conjugated compact polymer system. DAB was used as the chromogen. Tissues were counterstained with hematoxylin and mounted with DPX.



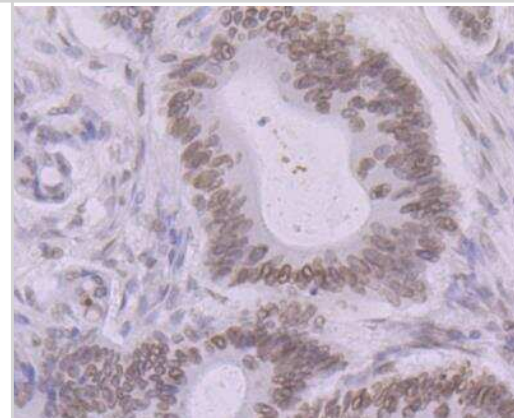
Flow Cytometry: BANF1 Antibody (JG40-43) [NBP2-76978] - Flow cytometric analysis of MCF-7 cells with BANF1 antibody at 1/100 dilution (purple) compared with an unlabelled control (cells without incubation with primary antibody; yellow). Alexa Fluor 488-conjugated goat anti-rabbit IgG was used as the secondary antibody.



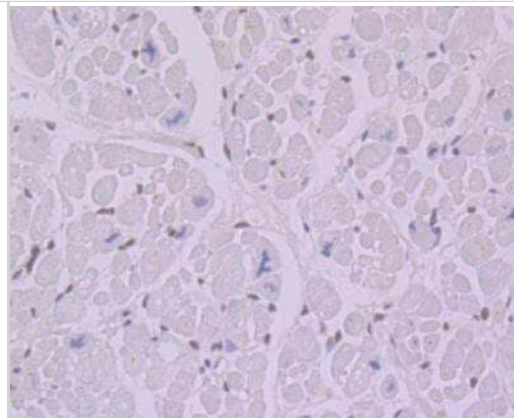
Immunohistochemistry: BANF1 Antibody (JG40-43) [NBP2-76978] - Immunohistochemical analysis of paraffin-embedded human thyroid gland tissue using anti-BANF1 antibody. Counter stained with hematoxylin.



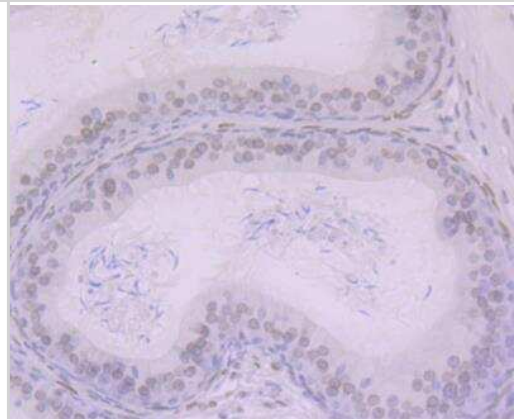
Immunohistochemistry: BANF1 Antibody (JG40-43) [NBP2-76978] - Immunohistochemical analysis of paraffin-embedded human colon cancer tissue using anti-BANF1 antibody. Counter stained with hematoxylin.



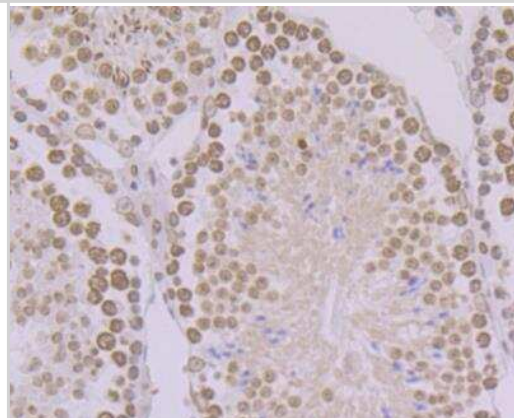
Immunohistochemistry: BANF1 Antibody (JG40-43) [NBP2-76978] - Immunohistochemical analysis of paraffin-embedded human heart tissue using anti-BANF1 antibody. Counter stained with hematoxylin.



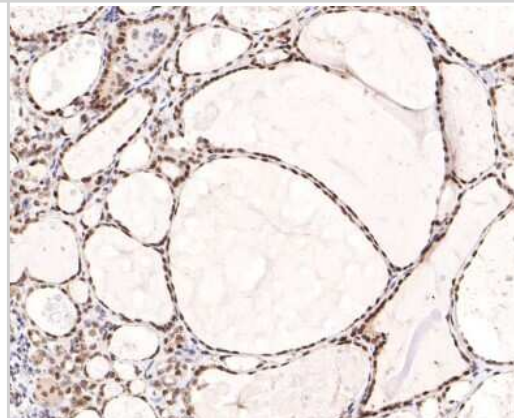
Immunohistochemistry: BANF1 Antibody (JG40-43) [NBP2-76978] - Immunohistochemical analysis of paraffin-embedded rat epididymis tissue using anti-BANF1 antibody. Counter stained with hematoxylin.



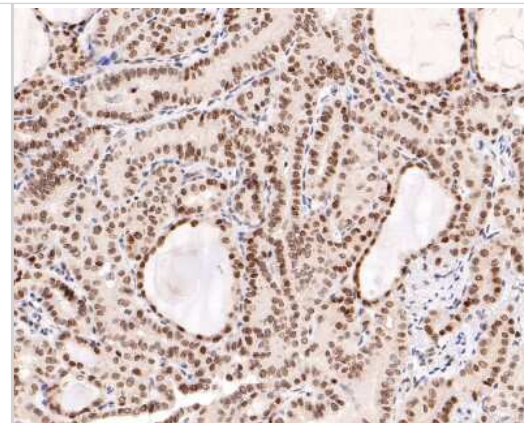
Immunohistochemistry: BANF1 Antibody (JG40-43) [NBP2-76978] - Immunohistochemical analysis of paraffin-embedded mouse testis tissue using anti-BANF1 antibody. Counter stained with hematoxylin.



Immunohistochemistry-Paraffin: BANF1 Antibody (JG40-43) [NBP2-76978] - Analysis of paraffin-embedded human thyroid tissue using anti-BANF1 antibody. The section was pre-treated using heat mediated antigen retrieval with Tris-EDTA buffer (pH 9.0) for 20 minutes. The tissues were blocked in 1% BSA for 30 minutes at room temperature, washed with ddH₂O and PBS, and then probed with the primary antibody (1/400) for 30 minutes at room temperature. The detection was performed using an HRP conjugated compact polymer system. DAB was used as the chromogen. Tissues were counterstained with hematoxylin and mounted with DPX.



Immunohistochemistry-Paraffin: BANF1 Antibody (JG40-43) [NBP2-76978] - Analysis of paraffin-embedded human thyroid carcinoma tissue using anti-BANF1 antibody. The section was pre-treated using heat mediated antigen retrieval with sodium citrate buffer (pH 6.0) for 20 minutes. The tissues were blocked in 1% BSA for 30 minutes at room temperature, washed with ddH₂O and PBS, and then probed with the primary antibody (1/400) for 30 minutes at room temperature. The detection was performed using an HRP conjugated compact polymer system. DAB was used as the chromogen. Tissues were counterstained with hematoxylin and mounted with DPX.





Novus Biologicals USA

10730 E. Briarwood Avenue
Centennial, CO 80112
USA
Phone: 303.730.1950
Toll Free: 1.888.506.6887
Fax: 303.730.1966
nb-customerservice@bio-techne.com

Bio-Techne Canada

21 Canmotor Ave
Toronto, ON M8Z 4E6
Canada
Phone: 905.827.6400
Toll Free: 855.668.8722
Fax: 905.827.6402
canada.inquires@bio-techne.com

Bio-Techne Ltd

19 Barton Lane
Abingdon Science Park
Abingdon, OX14 3NB, United Kingdom
Phone: (44) (0) 1235 529449
Free Phone: 0800 37 34 15
Fax: (44) (0) 1235 533420
info.EMEA@bio-techne.com

General Contact Information

www.novusbio.com
Technical Support: nb-technical@bio-techne.com
Orders: nb-customerservice@bio-techne.com
General: novus@novusbio.com

Products Related to NBP2-76978

NBP2-33376H	Blue Marker Antibody (6F4-F6) [HRP]
HAF008	Goat anti-Rabbit IgG Secondary Antibody [HRP]
NB7160	Goat anti-Rabbit IgG (H+L) Secondary Antibody [HRP]
NBP2-24891	Rabbit IgG Isotype Control

Limitations

This product is for research use only and is not approved for use in humans or in clinical diagnosis. Primary Antibodies are guaranteed for 1 year from date of receipt.

For more information on our 100% guarantee, please visit www.novusbio.com/guarantee

Earn gift cards/discounts by submitting a review: www.novusbio.com/reviews/submit/NBP2-76978

Earn gift cards/discounts by submitting a publication using this product:
www.novusbio.com/publications

