

# Product Datasheet

## Apolipoprotein E R2/ApoE R2 Antibody NBP2-76911

Unit Size: 100 ul

Store at 4C short term. Aliquot and store at -20C long term. Avoid freeze-thaw cycles.

[www.novusbio.com](http://www.novusbio.com)



[technical@novusbio.com](mailto:technical@novusbio.com)

Protocols, Publications, Related Products, Reviews, Research Tools and Images at:  
[www.novusbio.com/NBP2-76911](http://www.novusbio.com/NBP2-76911)

Updated 9/9/2025 v.20.1

Earn rewards for product  
reviews and publications.

Submit a publication at [www.novusbio.com/publications](http://www.novusbio.com/publications)

Submit a review at [www.novusbio.com/reviews/destination/NBP2-76911](http://www.novusbio.com/reviews/destination/NBP2-76911)



**NBP2-76911****Apolipoprotein E R2/ApoE R2 Antibody**

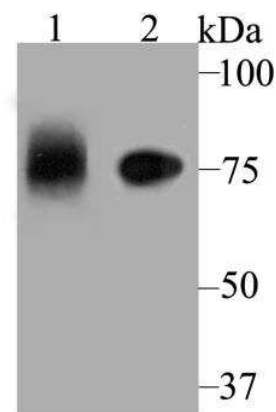
Product Information	
Unit Size	100 ul
Concentration	1 mg/ml
Storage	Store at 4C short term. Aliquot and store at -20C long term. Avoid freeze-thaw cycles.
Clonality	Polyclonal
Preservative	0.05% Sodium Azide
Isotype	IgG
Purity	Immunogen affinity purified
Buffer	PBS (pH7.4), 0.2% BSA, 50% Glycerol
Target Molecular Weight	77 kDa

Product Description	
Description	Novus Biologicals Rabbit Apolipoprotein E R2/ApoE R2 Antibody (NBP2-76911) is a polyclonal antibody validated for use in IHC, WB, Flow and ICC/IF. All Novus Biologicals antibodies are covered by our 100% guarantee.
Host	Rabbit
Gene ID	7804
Gene Symbol	LRP8
Species	Human, Mouse
Immunogen	Recombinant protein within Human Apolipoprotein E R2/ApoE R2 aa 494-722 / 963. (SwissProt: Q14114 Human; SwissProt: Q924X6 Mouse)

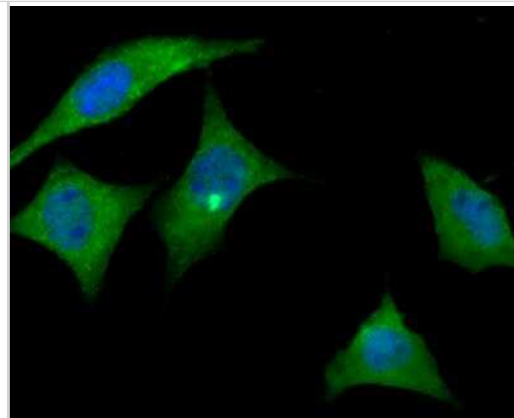
Product Application Details	
Applications	Western Blot, Immunohistochemistry-Paraffin, Flow Cytometry, Immunocytochemistry/ Immunofluorescence, Immunohistochemistry
Recommended Dilutions	Western Blot 1:500-1:1000, Flow Cytometry 1:50-1:100, Immunohistochemistry, Immunocytochemistry/ Immunofluorescence 1:50-1:200, Immunohistochemistry-Paraffin 1:50

**Images**

Western Blot: Apolipoprotein E R2/ApoE R2 Antibody [NBP2-76911] - Western blot analysis of ApoER2 on different lysates using anti-ApoER2 antibody at 1/1,000 dilution. Positive control: Lane1: Mouse placenta Lane2: SH-SY-5Y



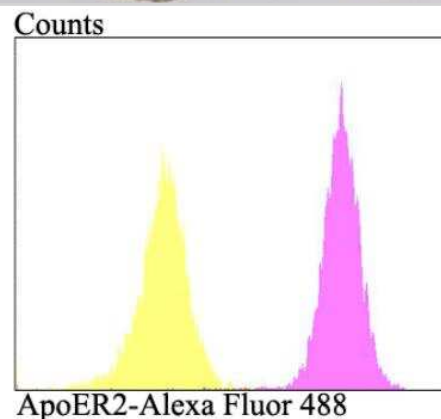
Immunocytochemistry/Immunofluorescence: Apolipoprotein E R2/ApoE R2 Antibody [NBP2-76911] - ICC staining ApoER2 in SH-SY-5Y cells (green). The nuclear counter stain is DAPI (blue). Cells were fixed in paraformaldehyde, permeabilised with 0.25% Triton X100/PBS.



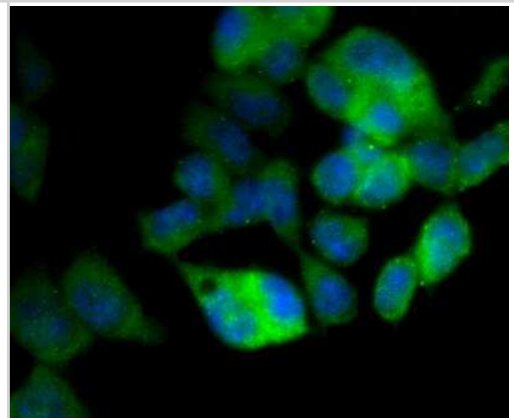
Immunohistochemistry: Apolipoprotein E R2/ApoE R2 Antibody [NBP2-76911] - Immunohistochemical analysis of paraffin-embedded human placenta tissue using anti-ApoER2 antibody. Counter stained with hematoxylin.



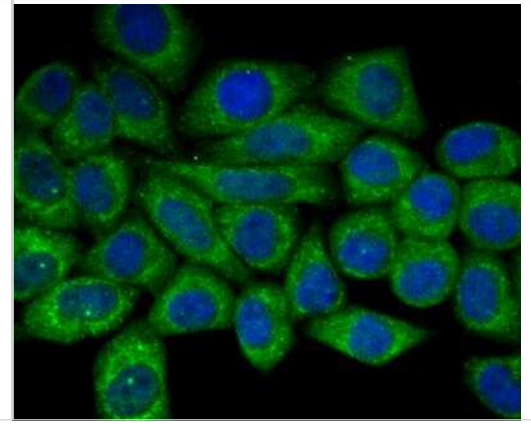
Flow Cytometry: Apolipoprotein E R2/ApoE R2 Antibody [NBP2-76911] - Flow cytometric analysis of SH-SY-5Y cells with ApoER2 antibody at 1/100 dilution (purple) compared with an unlabelled control (cells without incubation with primary antibody; yellow). Alexa Fluor 488-conjugated goat anti-rabbit IgG was used as the secondary antibody.



Immunocytochemistry/Immunofluorescence: Apolipoprotein E R2/ApoE R2 Antibody [NBP2-76911] - ICC staining ApoER2 in F9 cells (green). The nuclear counter stain is DAPI (blue). Cells were fixed in paraformaldehyde, permeabilised with 0.25% Triton X100/PBS.



Immunocytochemistry/Immunofluorescence: Apolipoprotein E R2/ApoE R2 Antibody [NBP2-76911] - ICC staining ApoER2 in HepG2 cells (green). The nuclear counter stain is DAPI (blue). Cells were fixed in paraformaldehyde, permeabilised with 0.25% Triton X100/PBS.





### **Novus Biologicals USA**

10730 E. Briarwood Avenue  
Centennial, CO 80112  
USA  
Phone: 303.730.1950  
Toll Free: 1.888.506.6887  
Fax: 303.730.1966  
nb-customerservice@bio-techne.com

### **Bio-Techne Canada**

21 Canmotor Ave  
Toronto, ON M8Z 4E6  
Canada  
Phone: 905.827.6400  
Toll Free: 855.668.8722  
Fax: 905.827.6402  
canada.inquires@bio-techne.com

### **Bio-Techne Ltd**

19 Barton Lane  
Abingdon Science Park  
Abingdon, OX14 3NB, United Kingdom  
Phone: (44) (0) 1235 529449  
Free Phone: 0800 37 34 15  
Fax: (44) (0) 1235 533420  
info.EMEA@bio-techne.com

### **General Contact Information**

www.novusbio.com  
Technical Support: nb-technical@bio-techne.com  
Orders: nb-customerservice@bio-techne.com  
General: novus@novusbio.com

### **Products Related to NBP2-76911**

---

NBP2-33376H	Blue Marker Antibody (6F4-F6) [HRP]
HAF008	Goat anti-Rabbit IgG Secondary Antibody [HRP]
NB7160	Goat anti-Rabbit IgG (H+L) Secondary Antibody [HRP]
NBP2-24891	Rabbit IgG Isotype Control

---

### **Limitations**

This product is for research use only and is not approved for use in humans or in clinical diagnosis. Primary Antibodies are guaranteed for 1 year from date of receipt.

For more information on our 100% guarantee, please visit [www.novusbio.com/guarantee](http://www.novusbio.com/guarantee)

Earn gift cards/discounts by submitting a review: [www.novusbio.com/reviews/submit/NBP2-76911](http://www.novusbio.com/reviews/submit/NBP2-76911)

Earn gift cards/discounts by submitting a publication using this product:  
[www.novusbio.com/publications](http://www.novusbio.com/publications)

