

Product Datasheet

CTCF Antibody (BLR041F)

NBP2-76420

Unit Size: 100 ul

Store at 2 - 8 C / 1 year from date of receipt

www.novusbio.com



technical@novusbio.com

Protocols, Publications, Related Products, Reviews, Research Tools and Images at:
www.novusbio.com/NBP2-76420

Updated 2/24/2026 v.20.1

Earn rewards for product
reviews and publications.

Submit a publication at www.novusbio.com/publications

Submit a review at www.novusbio.com/reviews/destination/NBP2-76420



NBP2-76420

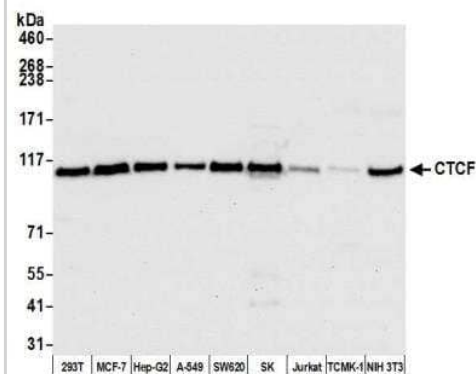
CTCF Antibody (BLR041F)

Product Information	
Unit Size	100 ul
Concentration	Please see the vial label for concentration. If unlisted please contact technical services.
Storage	Store at 2 - 8 C / 1 year from date of receipt
Clonality	Monoclonal
Clone	BLR041F
Preservative	0.09% Sodium Azide
Isotype	IgG
Purity	Antigen Affinity-purified
Buffer	Borate Buffered Saline (BBS) pH 8.2 with 0.1% BSA
Product Description	
Description	Novus Biologicals Rabbit CTCF Antibody (BLR041F) (NBP2-76420) is a recombinant monoclonal antibody validated for use in Multiplex Immunofluorescence, IHC, WB, Flow, ICC/IF, Simple Western and IP. All Novus Biologicals antibodies are covered by our 100% guarantee.
Host	Rabbit
Gene ID	10664
Gene Symbol	CTCF
Species	Human, Mouse
Immunogen	Immunogen sequence between amino acids 650 and 700
Notes	This Product sold under License from Bethyl Laboratories, Inc.
Product Application Details	
Applications	Western Blot, Simple Western, Immunohistochemistry-Paraffin, Flow Cytometry, Immunocytochemistry/ Immunofluorescence, Immunohistochemistry, Immunoprecipitation, Multiplex Immunofluorescence
Recommended Dilutions	Western Blot 1:1000, Simple Western 1:10, 1:50, Flow Cytometry Fixed in 4% formaldehyde and permeabilized with 90% methanol. 1 µl, Immunohistochemistry 1:100 - 1:500, Immunocytochemistry/ Immunofluorescence, Immunoprecipitation 20 ul/1mg lysate, Immunohistochemistry-Paraffin 1:100- 1:500, Multiplex Immunofluorescence
Application Notes	Epitope retrieval with citrate buffer pH6.0 is recommended for FFPE cell sections. See Simple Western Antibody Database for Simple Western validation: Tested in HEK293T [0.08 mg/mL], separated by Size, antibody dilution of 1:10, 1:50, apparent MW was 138-140 kDa

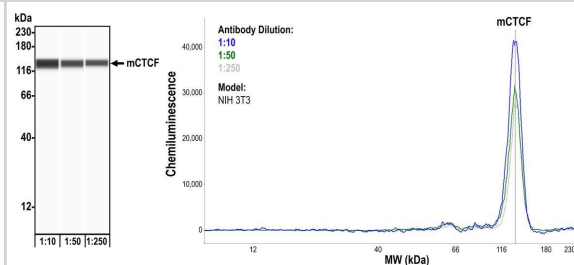


Images

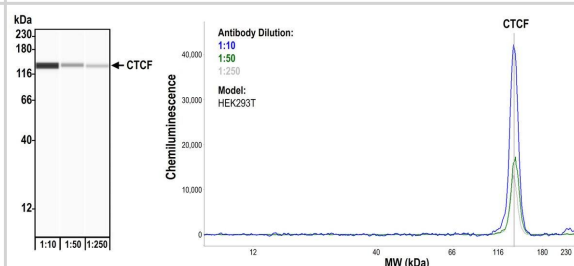
Western Blot: CTCF Antibody (BLR041F) [NBP2-76420] - Detection of human CTCF by WB of HEK293T, MCF-7, Hep-G2, A-549, SW620, SK-MEL-28 (SK), Jurkat, TCMK-1, and NIH 3T3 lysate. Antibody: Rabbit anti-CTCF recombinant monoclonal [BLR041F] (NBP2-76420)
Secondary: HRP-conjugated goat anti-rabbit IgG.



Simple Western: CTCF Antibody (BLR041F) [NBP2-76420] - Detection of mouse CTCF by Simple Western™. Samples: Whole cell lysate (2.0 mg/mL) from NIH 3T3 cells prepared using NETN lysis buffer. Antibody: Rabbit anti-CTCF recombinant monoclonal antibody [BLR041F] (NBP2-76420) used at 1:10, 1:50, and 1:250. Separation and Detection: SallySue ProteinSimple instrument with the 12-230 kDa separation module and anti-Rabbit detection module. Left Panel: Virtual Lane View. Right Panel: Electropherogram. Image validated internally.



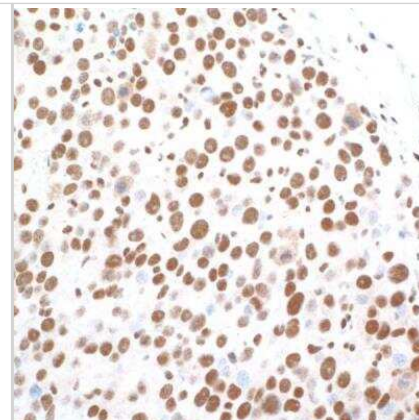
Simple Western: CTCF Antibody (BLR041F) [NBP2-76420] - Detection of human CTCF by Simple Western™. Samples: Whole cell lysate (0.08 mg/mL) from HEK293T cells prepared using NETN lysis buffer. Antibody: Rabbit anti-CTCF recombinant monoclonal antibody [BLR041F] (NBP2-76420) used at 1:10, 1:50, and 1:250. Separation and Detection: SallySue ProteinSimple instrument with the 12-230 kDa separation module and anti-Rabbit detection module. Left Panel: Virtual Lane View. Right Panel: Electropherogram. Image validated internally.



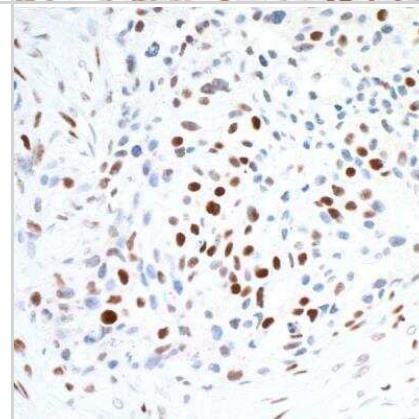
Immunocytochemistry: CTCF Antibody (BLR041F) [NBP2-76420] - Detection of human CTCF in FFPE MCF-7 cells by ICC. Antibody: Rabbit anti-CTCF recombinant monoclonal [BLR041F] (NBP2-76420). Secondary: HRP-conjugated goat anti-rabbit IgG. Substrate: DAB.



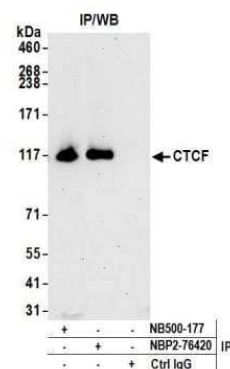
Immunohistochemistry: CTCF Antibody (BLR041F) [NBP2-76420] - Detection of mouse CTCF in FFPE renal cell carcinoma by IHC. Antibody: Rabbit anti-CTCF recombinant monoclonal [BLR041F] (NBP2-76420). Secondary: HRP-conjugated goat anti-rabbit IgG. Substrate: DAB.



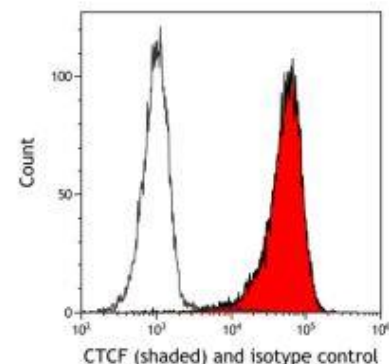
Immunohistochemistry: CTCF Antibody (BLR041F) [NBP2-76420] - Detection of human CTCF in FFPE lung carcinoma by IHC. Antibody: Rabbit anti-CTCF recombinant monoclonal [BLR041F] (NBP2-76420). Secondary: HRP-conjugated goat anti-rabbit IgG. Substrate: DAB.



Immunoprecipitation: CTCF Antibody (BLR041F) [NBP2-76420] - Detection of human CTCF by WB of immunoprecipitates from HEK293T lysate. Antibodies: Rabbit anti-CTCF recombinant monoclonal [BLR041F] (NBP2-76420) and rabbit anti-CTCF (NB500-177).



Flow Cytometry-CTCF Antibody (BLR041F) [NBP2-76420] -Rabbit anti-CTCF recombinant monoclonal antibody [BLR041F] or isotype control (unshaded). Secondary: DyLight® 650-conjugated goat anti-rabbit IgG.





Novus Biologicals USA

10730 E. Briarwood Avenue
Centennial, CO 80112
USA
Phone: 303.730.1950
Toll Free: 1.888.506.6887
Fax: 303.730.1966
nb-customerservice@bio-techne.com

Bio-Techne Canada

21 Canmotor Ave
Toronto, ON M8Z 4E6
Canada
Phone: 905.827.6400
Toll Free: 855.668.8722
Fax: 905.827.6402
canada.inquires@bio-techne.com

Bio-Techne Ltd

19 Barton Lane
Abingdon Science Park
Abingdon, OX14 3NB, United Kingdom
Phone: (44) (0) 1235 529449
Free Phone: 0800 37 34 15
Fax: (44) (0) 1235 533420
info.EMEA@bio-techne.com

General Contact Information

www.novusbio.com
Technical Support: nb-technical@bio-techne.com
Orders: nb-customerservice@bio-techne.com
General: novus@novusbio.com

Products Related to NBP2-76420

NBP2-33376H	Blue Marker Antibody (6F4-F6) [HRP]
HAF008	Goat anti-Rabbit IgG Secondary Antibody [HRP]
NB7160	Goat anti-Rabbit IgG (H+L) Secondary Antibody [HRP]
NBP2-24891	Rabbit IgG Isotype Control

Limitations

This product is for research use only and is not approved for use in humans or in clinical diagnosis. Primary Antibodies are guaranteed for 1 year from date of receipt.

For more information on our 100% guarantee, please visit www.novusbio.com/guarantee

Earn gift cards/discounts by submitting a review: www.novusbio.com/reviews/submit/NBP2-76420

Earn gift cards/discounts by submitting a publication using this product:
www.novusbio.com/publications

