

# Product Datasheet

## SMC1 Antibody (BL-205-2G8)

### NBP2-76412

Unit Size: 100 ul

Store at 2 - 8 C / 1 year from date of receipt

[www.novusbio.com](http://www.novusbio.com)



[technical@novusbio.com](mailto:technical@novusbio.com)

Protocols, Publications, Related Products, Reviews, Research Tools and Images at:  
[www.novusbio.com/NBP2-76412](http://www.novusbio.com/NBP2-76412)

Updated 2/24/2026 v.20.1

Earn rewards for product  
reviews and publications.

Submit a publication at [www.novusbio.com/publications](http://www.novusbio.com/publications)

Submit a review at [www.novusbio.com/reviews/destination/NBP2-76412](http://www.novusbio.com/reviews/destination/NBP2-76412)



**NBP2-76412**

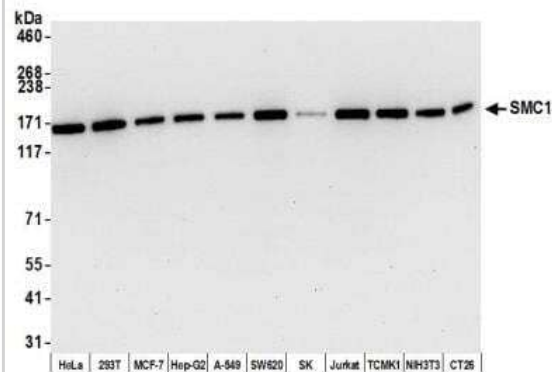
SMC1 Antibody (BL-205-2G8)

<b>Product Information</b>	
<b>Unit Size</b>	100 ul
<b>Concentration</b>	Please see the vial label for concentration. If unlisted please contact technical services.
<b>Storage</b>	Store at 2 - 8 C / 1 year from date of receipt
<b>Clonality</b>	Monoclonal
<b>Clone</b>	BL-205-2G8
<b>Preservative</b>	0.09% Sodium Azide
<b>Isotype</b>	IgG
<b>Purity</b>	Antigen Affinity-purified
<b>Buffer</b>	Borate Buffered Saline (BBS) pH 8.2 with 0.1% BSA
<b>Product Description</b>	
<b>Description</b>	Novus Biologicals Rabbit SMC1 Antibody (BL-205-2G8) (NBP2-76412) is a recombinant monoclonal antibody validated for use in IHC, WB, ICC/IF and IP. All Novus Biologicals antibodies are covered by our 100% guarantee.
<b>Host</b>	Rabbit
<b>Gene ID</b>	8243
<b>Gene Symbol</b>	SMC1A
<b>Species</b>	Human, Mouse
<b>Immunogen</b>	Immunogen sequence between amino acids 1200 and 1233 (C-Term)
<b>Notes</b>	This Product sold under License from Bethyl Laboratories, Inc.
<b>Product Application Details</b>	
<b>Applications</b>	Western Blot, Immunocytochemistry/ Immunofluorescence, Immunohistochemistry, Immunoprecipitation
<b>Recommended Dilutions</b>	Western Blot 1:1000, Immunohistochemistry, Immunocytochemistry/ Immunofluorescence, Immunoprecipitation 20 ul/mg lysate

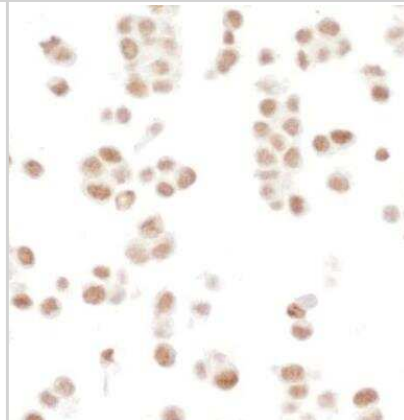


## Images

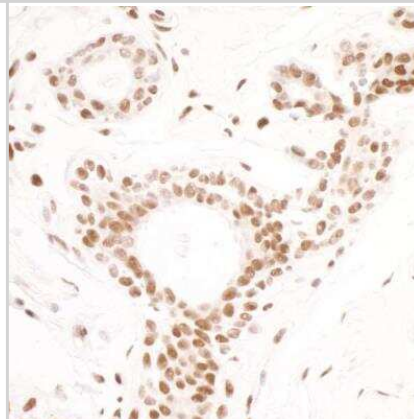
Western Blot: SMC1 Antibody (BL-205-2G8) [NBP2-76412] - Detection of human and mouse SMC1 by WB of HeLa, HEK293T, MCF-7, Hep-G2, A-549, SW620, SK-MEL-28 (SK), Jurkat, TCMK-1, NIH 3T3, and CT26 lysate. Antibody: Rabbit anti-SMC1 recombinant monoclonal [BL-205-2G8] (NBP2-76412). Secondary: HRP-conjugated goat anti-rabbit IgG.



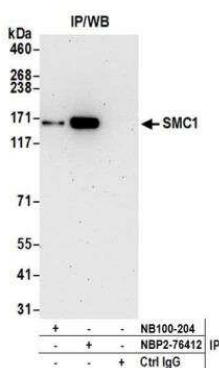
Immunocytochemistry: SMC1 Antibody (BL-205-2G8) [NBP2-76412] - Detection of human SMC1 in FFPE HCT 116 cells by ICC. Antibody: Rabbit anti-SMC1 recombinant monoclonal [BL-205-2G8] (NBP2-76412). Secondary: HRP-conjugated goat anti-rabbit IgG. Substrate: DAB.



Immunohistochemistry: SMC1 Antibody (BL-205-2G8) [NBP2-76412] - Detection of human SMC1 in FFPE breast carcinoma by IHC. Antibody: Rabbit anti-SMC1 recombinant monoclonal [BL-205-2G8] (NBP2-76412). Secondary: HRP-conjugated goat anti-rabbit IgG. Substrate: DAB.



Immunoprecipitation: SMC1 Antibody (BL-205-2G8) [NBP2-76412] - Detection of human SMC1 by WB of immunoprecipitates from HEK293T lysate. Antibodies: Rabbit anti-SMC1 recombinant monoclonal [BL-205-2G8] (NBP2-76412) and rabbit anti-SMC1 (NB100-204).





### **Novus Biologicals USA**

10730 E. Briarwood Avenue  
Centennial, CO 80112  
USA  
Phone: 303.730.1950  
Toll Free: 1.888.506.6887  
Fax: 303.730.1966  
nb-customerservice@bio-techne.com

### **Bio-Techne Canada**

21 Canmotor Ave  
Toronto, ON M8Z 4E6  
Canada  
Phone: 905.827.6400  
Toll Free: 855.668.8722  
Fax: 905.827.6402  
canada.inquires@bio-techne.com

### **Bio-Techne Ltd**

19 Barton Lane  
Abingdon Science Park  
Abingdon, OX14 3NB, United Kingdom  
Phone: (44) (0) 1235 529449  
Free Phone: 0800 37 34 15  
Fax: (44) (0) 1235 533420  
info.EMEA@bio-techne.com

### **General Contact Information**

www.novusbio.com  
Technical Support: nb-technical@bio-techne.com  
Orders: nb-customerservice@bio-techne.com  
General: novus@novusbio.com

### **Products Related to NBP2-76412**

---

NBP2-33376H	Blue Marker Antibody (6F4-F6) [HRP]
HAF008	Goat anti-Rabbit IgG Secondary Antibody [HRP]
NB7160	Goat anti-Rabbit IgG (H+L) Secondary Antibody [HRP]
NBP2-24891	Rabbit IgG Isotype Control

---

### **Limitations**

This product is for research use only and is not approved for use in humans or in clinical diagnosis. Primary Antibodies are guaranteed for 1 year from date of receipt.

For more information on our 100% guarantee, please visit [www.novusbio.com/guarantee](http://www.novusbio.com/guarantee)

Earn gift cards/discounts by submitting a review: [www.novusbio.com/reviews/submit/NBP2-76412](http://www.novusbio.com/reviews/submit/NBP2-76412)

Earn gift cards/discounts by submitting a publication using this product:  
[www.novusbio.com/publications](http://www.novusbio.com/publications)

