

# Product Datasheet

## KAP1 [p Ser824] Antibody (BL-246-7B5) NBP2-76398

Unit Size: 100 ul

Store at 2 - 8 C / 1 year from date of receipt

[www.novusbio.com](http://www.novusbio.com)



[technical@novusbio.com](mailto:technical@novusbio.com)

Protocols, Publications, Related Products, Reviews, Research Tools and Images at:  
[www.novusbio.com/NBP2-76398](http://www.novusbio.com/NBP2-76398)

Updated 2/24/2026 v.20.1

Earn rewards for product  
reviews and publications.

Submit a publication at [www.novusbio.com/publications](http://www.novusbio.com/publications)

Submit a review at [www.novusbio.com/reviews/destination/NBP2-76398](http://www.novusbio.com/reviews/destination/NBP2-76398)

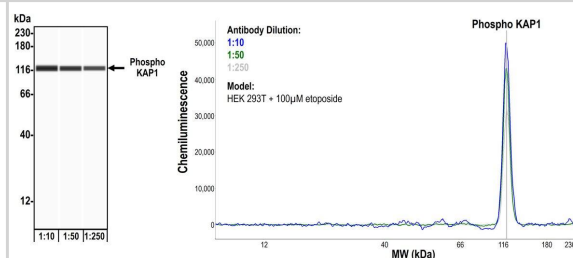


**NBP2-76398****KAP1 [p Ser824] Antibody (BL-246-7B5)**

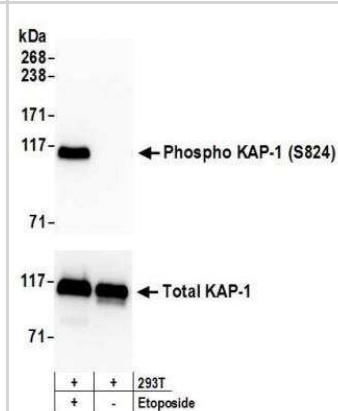
<b>Product Information</b>	
<b>Unit Size</b>	100 ul
<b>Concentration</b>	Please see the vial label for concentration. If unlisted please contact technical services.
<b>Storage</b>	Store at 2 - 8 C / 1 year from date of receipt
<b>Clonality</b>	Monoclonal
<b>Clone</b>	BL-246-7B5
<b>Preservative</b>	0.09% Sodium Azide
<b>Isotype</b>	IgG
<b>Purity</b>	Antigen Affinity-purified
<b>Buffer</b>	Borate Buffered Saline (BBS) pH 8.2 with 0.1% BSA
<b>Product Description</b>	
<b>Description</b>	Novus Biologicals Rabbit KAP1 [p Ser824] Antibody (BL-246-7B5) (NBP2-76398) is a recombinant monoclonal antibody validated for use in IHC, WB, Flow, ICC/IF, Simple Western and IP. All Novus Biologicals antibodies are covered by our 100% guarantee.
<b>Host</b>	Rabbit
<b>Gene ID</b>	10155
<b>Gene Symbol</b>	TRIM28
<b>Species</b>	Human, Mouse
<b>Immunogen</b>	Immunogen was a synthetic phosphorylated peptide, which represented a portion of human KRAB-Associated Protein 1 surrounding Serine 824 according to the numbering given in entry NP_005753.1 (GeneID 10155)
<b>Notes</b>	This Product sold under License from Bethyl Laboratories, Inc.
<b>Product Application Details</b>	
<b>Applications</b>	Western Blot, Simple Western, Immunohistochemistry-Paraffin, Flow Cytometry, Immunocytochemistry/ Immunofluorescence, Immunohistochemistry, Immunoprecipitation
<b>Recommended Dilutions</b>	Western Blot 1:1000, Simple Western 1:10-1:250, Flow Cytometry Fixed in 4% formaldehyde and permeabilized with 90% methanol. 1 ul, Immunohistochemistry 1:100 - 1:500, Immunocytochemistry/ Immunofluorescence 1:100 - 1:500, Immunoprecipitation 20 ul/mg lysate, Immunohistochemistry-Paraffin 1:100 - 1:500
<b>Application Notes</b>	Epitope retrieval with citrate buffer pH 6.0 is recommended for FFPE tissue sections. See <a href="#">Simple Western Antibody Database</a> for Simple Western validation: Tested in HEK293T + etoposide [0.4 mg/mL], separated by Size, antibody dilution of 1:250, 1:50, 1:10, apparent MW was 121 kDa

## Images

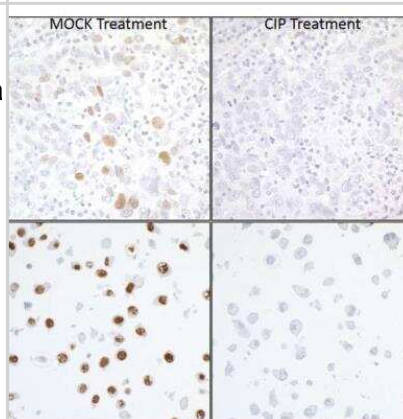
**Simple Western: KAP1 [p Ser824] Antibody (BL-246-7B5) [NBP2-76398]** - Detection of human Phospho KAP-1 (S824) by Simple Western™. Samples: Whole cell lysate (0.4 mg/mL) from HEK293T cells treated with 100  $\mu$ M etoposide prepared using NETN lysis buffer. Antibody: Rabbit anti-Phospho KAP-1 (S824) recombinant monoclonal antibody [BL-246-7B5] (NBP2-76398) used at 1:10, 1:50, and 1:250. Separation and Detection: SallySue ProteinSimple instrument with the 12-230 kDa separation module and anti-Rabbit detection module. Left Panel: Virtual Lane View. Right Panel: Electropherogram. Image validated internally.



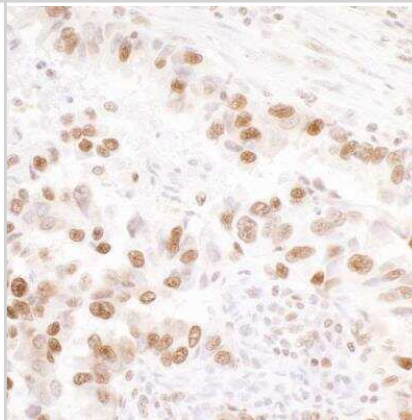
**Western Blot: KAP1 [p Ser824] Antibody (BL-246-7B5) [NBP2-76398]** - Detection of human Phospho KAP-1 (S824) by WB of HEK293T lysate treated with 100  $\mu$ M EPE (+) or mock treated (-). Antibodies: Rabbit anti-Phospho KAP-1 (S824) recombinant monoclonal [BL-246-7B5] (NBP2-76398). Lower panel shows WB for total KAP-1 using rabbit anti-KAP-1 recombinant monoclonal [BL-248-2G6] (NBP2-76398). Secondary: HRP-conjugated goat anti-rabbit IgG.



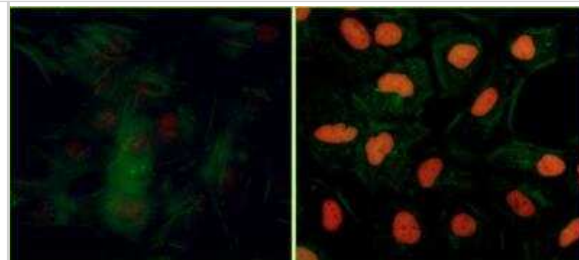
**Immunocytochemistry/Immunofluorescence: KAP1 [p Ser824] Antibody (BL-246-7B5) [NBP2-76398]** - Detection of human Phospho KAP1 (S824) in FFPE breast carcinoma by IHC and in FFPE EPE treated HeLa cells by ICC. Mock phosphatase treated sections (left) and calf intestinal phosphatase-treated sections (right). Antibody: Rabbit anti-Phospho KAP-1 (S824) recombinant monoclonal [BL-246-7B5] (NBP2-76398). Secondary: HRP-conjugated goat anti-rabbit IgG. Substrate: DAB.



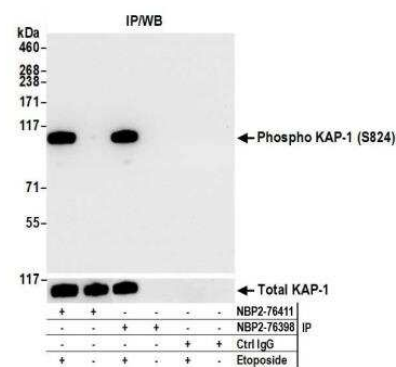
**Immunohistochemistry: KAP1 [p Ser824] Antibody (BL-246-7B5) [NBP2-76398]** - Detection of human Phospho KAP-1 (S824) in FFPE lung carcinoma by IHC. Antibody: Rabbit anti-Phospho KAP-1 (S824) recombinant monoclonal [BL-246-7B5] (NBP2-76398). Secondary: HRP-conjugated goat anti-rabbit IgG. Substrate: DAB.



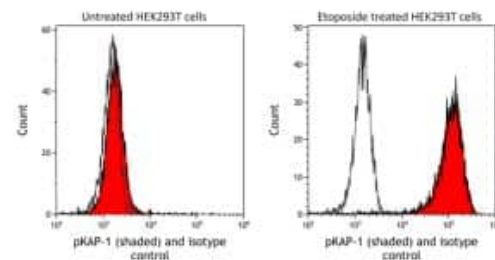
**Immunocytochemistry/Immunofluorescence:** KAP1 [p Ser824] Antibody (BL-246-7B5) [NBP2-76398] - Detection of human Phospho KAP-1 (S824) (red) in formaldehyde-fixed asynchronous HeLa cells treated with EPE (right) or untreated (left) by ICC-IF. Antibody: Rabbit anti-Phospho KAP-1 (S824) recombinant monoclonal [BL-246-7B5] (NBP2-76398). Secondary: DyLight 594-conjugated goat anti-rabbit IgG. Counterstain: Phalloidin conjugated Alexafluor 488 (green).



**Immunoprecipitation:** KAP1 [p Ser824] Antibody (BL-246-7B5) [NBP2-76398] - Detection of human Phospho KAP-1 (S824) by WB of immunoprecipitates from HEK293T lysate treated with 100 uM EPE (+) or mock treated (-). Antibodies: Rabbit anti-Phospho KAP-1 (S824) recombinant monoclonal [BL-246-7B5] (NBP2-76398) and rabbit anti-KAP-1 recombinant monoclonal [BL-248-2G6] (NBP2-76411).



**Flow Cytometry-** KAP1 [p Ser824] Antibody (BL-246-7B5) [NBP2-76398] - Antibody: Rabbit anti-phospho KAP-1 recombinant monoclonal [BL-246-7B5] or isotype control (unshaded). Secondary: DyLight® 488-conjugated goat anti-rabbit IgG





### **Novus Biologicals USA**

10730 E. Briarwood Avenue  
Centennial, CO 80112  
USA  
Phone: 303.730.1950  
Toll Free: 1.888.506.6887  
Fax: 303.730.1966  
nb-customerservice@bio-techne.com

### **Bio-Techne Canada**

21 Canmotor Ave  
Toronto, ON M8Z 4E6  
Canada  
Phone: 905.827.6400  
Toll Free: 855.668.8722  
Fax: 905.827.6402  
canada.inquires@bio-techne.com

### **Bio-Techne Ltd**

19 Barton Lane  
Abingdon Science Park  
Abingdon, OX14 3NB, United Kingdom  
Phone: (44) (0) 1235 529449  
Free Phone: 0800 37 34 15  
Fax: (44) (0) 1235 533420  
info.EMEA@bio-techne.com

### **General Contact Information**

www.novusbio.com  
Technical Support: nb-technical@bio-techne.com  
Orders: nb-customerservice@bio-techne.com  
General: novus@novusbio.com

### **Products Related to NBP2-76398**

---

NBP2-33376H	Blue Marker Antibody (6F4-F6) [HRP]
HAF008	Goat anti-Rabbit IgG Secondary Antibody [HRP]
NB7160	Goat anti-Rabbit IgG (H+L) Secondary Antibody [HRP]
NBP2-24891	Rabbit IgG Isotype Control

---

### **Limitations**

This product is for research use only and is not approved for use in humans or in clinical diagnosis. Primary Antibodies are guaranteed for 1 year from date of receipt.

For more information on our 100% guarantee, please visit [www.novusbio.com/guarantee](http://www.novusbio.com/guarantee)

Earn gift cards/discounts by submitting a review: [www.novusbio.com/reviews/submit/NBP2-76398](http://www.novusbio.com/reviews/submit/NBP2-76398)

Earn gift cards/discounts by submitting a publication using this product:  
[www.novusbio.com/publications](http://www.novusbio.com/publications)

