

Product Datasheet

HIF-1 alpha Antibody (2443C) - BSA Free NBP2-75978

Unit Size: 0.1 mg

Store at 4C short term. Aliquot and store at -20C long term. Avoid freeze-thaw cycles.

www.novusbio.com



technical@novusbio.com

Reviews: 2 Publications: 1

Protocols, Publications, Related Products, Reviews, Research Tools and Images at:
www.novusbio.com/NBP2-75978

Updated 2/24/2026 v.20.1

**Earn rewards for product
reviews and publications.**

Submit a publication at www.novusbio.com/publications

Submit a review at www.novusbio.com/reviews/destination/NBP2-75978



NBP2-75978

HIF-1 alpha Antibody (2443C) - BSA Free

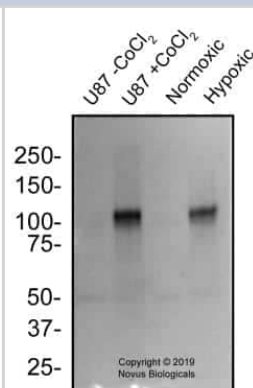
Product Information	
Unit Size	0.1 mg
Concentration	1.0 mg/ml
Storage	Store at 4C short term. Aliquot and store at -20C long term. Avoid freeze-thaw cycles.
Clonality	Monoclonal
Clone	2443C
Preservative	0.02% Sodium Azide
Isotype	IgG
Purity	Protein A or G purified
Buffer	PBS

Product Description	
Description	Novus Biologicals Knockout (KO) Validated Rabbit HIF-1 alpha Antibody (2443C) - BSA Free (NBP2-75978) is a recombinant monoclonal antibody validated for use in IHC, WB, ICC/IF and Simple Western. Anti-HIF-1 alpha Antibody: Cited in 1 publication. All Novus Biologicals antibodies are covered by our 100% guarantee.
Host	Rabbit
Gene ID	3091
Gene Symbol	HIF1A
Species	Human
Immunogen	This recombinant HIF-1 alpha Antibody (2443C) was developed against partial recombinant human HIF-1 alpha protein (amino acids 1-826) [Uniprot# Q16665].

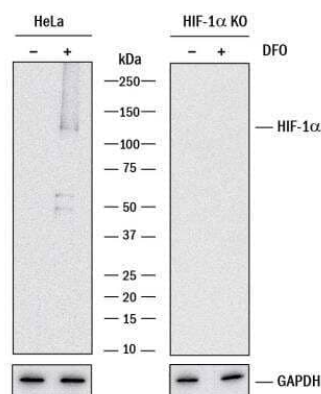
Product Application Details	
Applications	Western Blot, Simple Western, Immunohistochemistry-Paraffin, Immunocytochemistry/ Immunofluorescence, Immunohistochemistry, Knockout Validated
Recommended Dilutions	Western Blot 1 - 2 ug/ml, Simple Western, Immunohistochemistry 1 ug/ml, Immunocytochemistry/ Immunofluorescence, Immunohistochemistry-Paraffin 1 ug/ml, Knockout Validated
Application Notes	See Simple Western Antibody Database for Simple Western validation: tested in HepG2 +/- DFO cell lysate; separated by size; antibody dilution at 20 ug/ml

Images

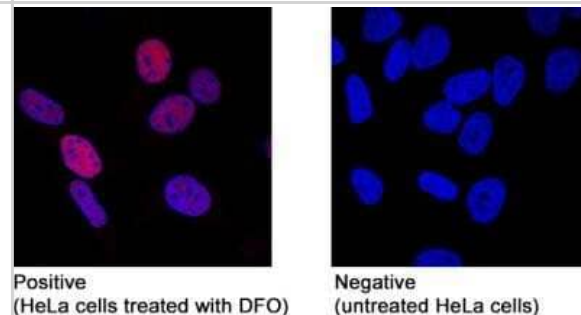
Western Blot: HIF-1 alpha Antibody (2443C) [NBP2-75978] - Total protein from Human U87 cells treated with or without CoCl₂ and under Normoxic and Hypoxic conditions was separated on a 7.5% gel by SDS-PAGE, transferred to PVDF membrane and blocked in 5% non-fat milk in TBST. The membrane was probed with 2.0 ug/ml anti-HIF-1 alpha in 5% non-fat milk in TBST and detected with an anti-rabbit HRP secondary antibody using chemiluminescence.



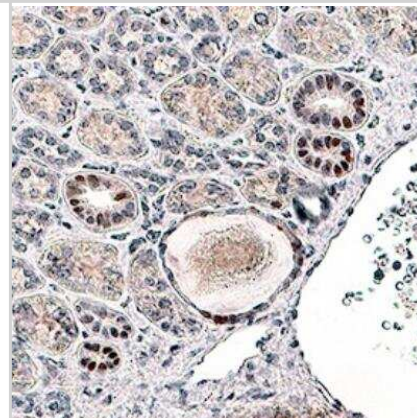
Western Blot: HIF-1 alpha Antibody (2443C) [NBP2-75978] - Western blot shows lysates of HeLa human cervical epithelial carcinoma parental cell line and HIF-1 alpha knockout HeLa cell line (KO) untreated (-) or treated (+) with 1 mM DFO for overnight. PVDF membrane was probed with 2 ug/mL of Rabbit Anti-Human HIF-1 alpha Monoclonal Antibody (Catalog # NBP2-75978) followed by HRP-conjugated Anti-Mouse IgG Secondary Antibody (Catalog # HAF018). A specific band was detected for HIF-1 alpha at approximately 120 kDa (as indicated) in the parental HeLa cell line, but is not detectable in knockout HeLa cell line. GAPDH (Catalog # MAB5718) is shown as a loading control.



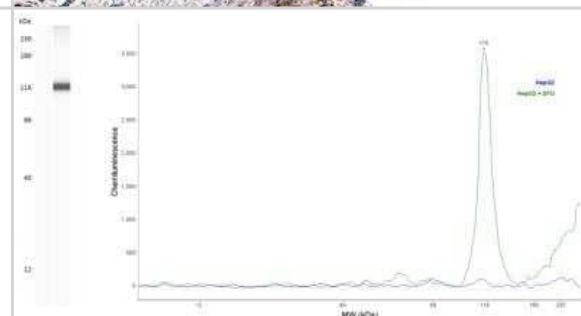
Immunocytochemistry/Immunofluorescence: HIF-1 alpha Antibody (2443C) [NBP2-75978] - Immunofluorescent staining of HIF-1 alpha using catalog number NBP2-75977 (clone 2443B). Staining was observed in HeLa cells treated with DFO but not in untreated HeLa cells.



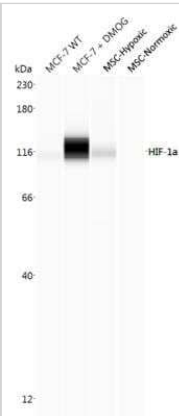
Immunohistochemistry-Paraffin: HIF-1 alpha Antibody (2443C) [NBP2-75978] - HIF-1 alpha (clone 2443C) was detected in immersion fixed paraffin-embedded sections of human kidney using Rabbit Anti-Human HIF-1 alpha Monoclonal Antibody (Catalog # NBP2-75978) at 1.0 ug/mL for 1 hour at room temperature followed by incubation with the Anti-Rabbit IgG VisUCyte (TM) HRP Polymer Antibody (Catalog # VC002). Tissue was stained using DAB (brown) and counterstained with hematoxylin (blue). Specific staining was localized to the nuclei.



Simple Western: HIF-1 alpha Antibody (2443C) [NBP2-75978] - Lane view shows a specific band for HIF-1 alpha in HepG2 +/- DFO cell lysate using 20 ug/mL. Electropherogram image of corresponding Simple Western lane view at WES molecular weight of 116 KDa. Image from an internal validation.



Simple Western: HIF-1 alpha Antibody (2443C) [NBP2-75978] - Simple Western lane view shows lysates of MCF +/- DMOG, BioSpherix MSCs in hypoxic conditions, and BioSpherix MSCs in normoxic conditions loaded at 0.5 mg/ml. A band was detected for HIF-1 alpha at approximately 116 kDa (as indicated) using NBP2-75978 (1:100 dilution) followed by Anti-Rabbit Secondary Antibody (042-206, ProteinSimple). This experiment was conducted under standard assay conditions, and using the 12-230 kDa separation module (SW-W004). Non-specific interaction with the 230 kDa Simple Western standard may be seen with this antibody. Image from an internal validation.



Publications

Gao Y, Chen MK, Chu YY et al. Nuclear translocation of the receptor tyrosine kinase c-MET reduces the treatment efficacies of olaparib and gemcitabine in pancreatic ductal adenocarcinoma cells American journal of cancer research 2021-01-01 [PMID: 33520371] (WB, Human)



Novus Biologicals USA

10730 E. Briarwood Avenue
Centennial, CO 80112
USA
Phone: 303.730.1950
Toll Free: 1.888.506.6887
Fax: 303.730.1966
nb-customerservice@bio-techne.com

Bio-Techne Canada

21 Canmotor Ave
Toronto, ON M8Z 4E6
Canada
Phone: 905.827.6400
Toll Free: 855.668.8722
Fax: 905.827.6402
canada.inquires@bio-techne.com

Bio-Techne Ltd

19 Barton Lane
Abingdon Science Park
Abingdon, OX14 3NB, United Kingdom
Phone: (44) (0) 1235 529449
Free Phone: 0800 37 34 15
Fax: (44) (0) 1235 533420
info.EMEA@bio-techne.com

General Contact Information

www.novusbio.com
Technical Support: nb-technical@bio-techne.com
Orders: nb-customerservice@bio-techne.com
General: novus@novusbio.com

Products Related to NBP2-75978

NBP2-33376H	Blue Marker Antibody (6F4-F6) [HRP]
HAF008	Goat anti-Rabbit IgG Secondary Antibody [HRP]
NB7160	Goat anti-Rabbit IgG (H+L) Secondary Antibody [HRP]
NBP2-24891	Rabbit IgG Isotype Control

Limitations

This product is for research use only and is not approved for use in humans or in clinical diagnosis. Primary Antibodies are guaranteed for 1 year from date of receipt.

For more information on our 100% guarantee, please visit www.novusbio.com/guarantee

Earn gift cards/discounts by submitting a review: www.novusbio.com/reviews/submit/NBP2-75978

Earn gift cards/discounts by submitting a publication using this product:
www.novusbio.com/publications

