

# Product Datasheet

## CHIP/STUB1 Antibody (JG38-22) NBP2-75440

Unit Size: 100 ul

Store at 4C short term. Aliquot and store at -20C long term. Avoid freeze-thaw cycles.

[www.novusbio.com](http://www.novusbio.com)



[technical@novusbio.com](mailto:technical@novusbio.com)

Protocols, Publications, Related Products, Reviews, Research Tools and Images at:  
[www.novusbio.com/NBP2-75440](http://www.novusbio.com/NBP2-75440)

Updated 2/24/2026 v.20.1

Earn rewards for product  
reviews and publications.

Submit a publication at [www.novusbio.com/publications](http://www.novusbio.com/publications)

Submit a review at [www.novusbio.com/reviews/destination/NBP2-75440](http://www.novusbio.com/reviews/destination/NBP2-75440)



**NBP2-75440**

CHIP/STUB1 Antibody (JG38-22)

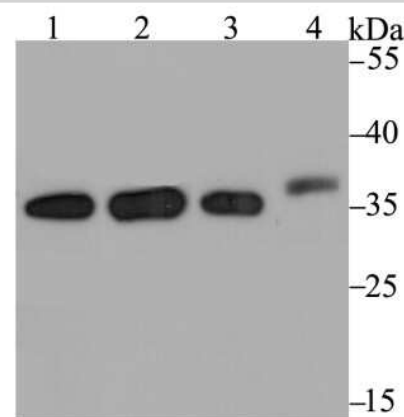
Product Information	
Unit Size	100 ul
Concentration	1 mg/ml
Storage	Store at 4C short term. Aliquot and store at -20C long term. Avoid freeze-thaw cycles.
Clonality	Monoclonal
Clone	JG38-22
Preservative	0.05% Sodium Azide
Isotype	IgG
Purity	Protein A purified
Buffer	TBS (pH7.4), 0.05% BSA, 40% Glycerol
Target Molecular Weight	35 kDa

Product Description	
Description	Novus Biologicals Rabbit CHIP/STUB1 Antibody (JG38-22) (NBP2-75440) is a recombinant monoclonal antibody validated for use in IHC, WB, Flow, ICC/IF and IP. All Novus Biologicals antibodies are covered by our 100% guarantee.
Host	Rabbit
Gene ID	10273
Gene Symbol	STUB1
Species	Human, Mouse, Rat
Immunogen	Synthetic peptide within Human CHIP/STUB1 aa 10-59 / 303. (SwissProt: Q9UNE7 Human; SwissProt: Q9WUD1 Mouse)

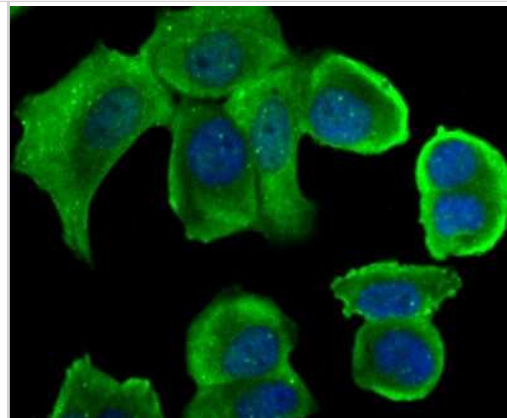
Product Application Details	
Applications	Western Blot, Immunohistochemistry-Paraffin, Flow Cytometry, Immunocytochemistry/ Immunofluorescence, Immunohistochemistry, Immunoprecipitation
Recommended Dilutions	Western Blot 1:1000-1:2000, Flow Cytometry 1:50-1:100, Immunohistochemistry, Immunocytochemistry/ Immunofluorescence 1:50-1:200, Immunoprecipitation, Immunohistochemistry-Paraffin 1:50-1:200

**Images**

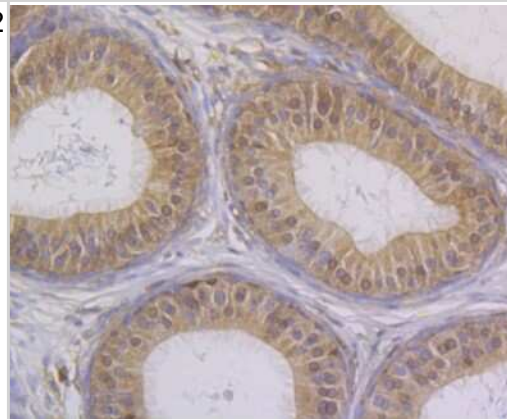
Western Blot: CHIP/STUB1 Antibody (JG38-22) [NBP2-75440] - Analysis of STUB1 on different lysates using anti-STUB1 antibody at 1/2,000 dilution. Positive control: Lane 1: 293 Lane 2: MCF-7 Lane 3: SK-Br-3 Lane 4: Mouse kidney



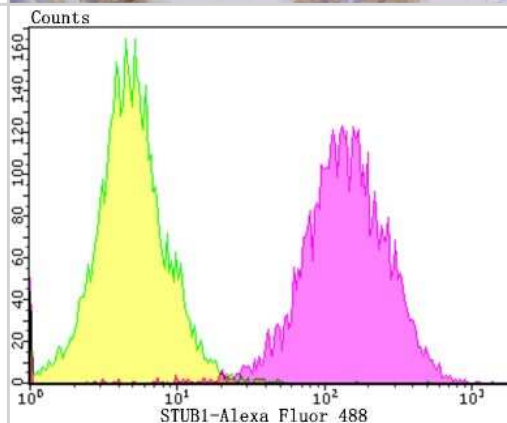
Immunocytochemistry/Immunofluorescence: CHIP/STUB1 Antibody (JG38-22) [NBP2-75440] - Staining STUB1 in MCF-7 cells (green). The nuclear counter stain is DAPI (blue). Cells were fixed in paraformaldehyde, permeabilised with 0.25% Triton X100/PBS.



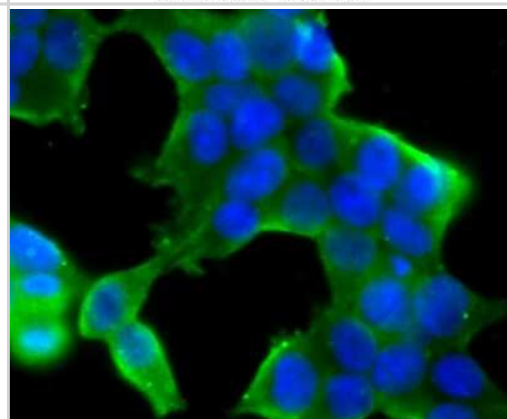
Immunohistochemistry-Paraffin: CHIP/STUB1 Antibody (JG38-22) [NBP2-75440] - Analysis of paraffin-embedded rat epididymis tissue using anti-STUB1 antibody. Counter stained with hematoxylin.



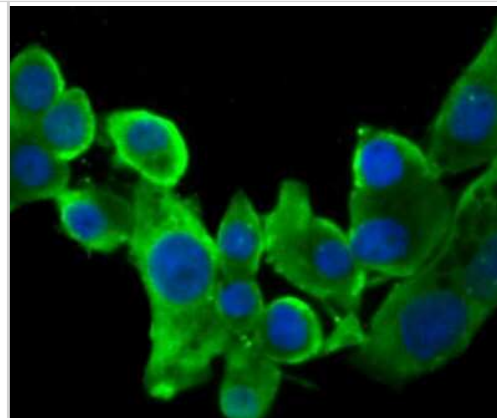
Flow Cytometry: CHIP/STUB1 Antibody (JG38-22) [NBP2-75440] - Analysis of SH-SY-5Y cells with STUB1 antibody at 1/100 dilution (purple) compared with an unlabelled control (cells without incubation with primary antibody; yellow). Alexa Fluor 488-conjugated goat anti-rabbit IgG was used as the secondary antibody.



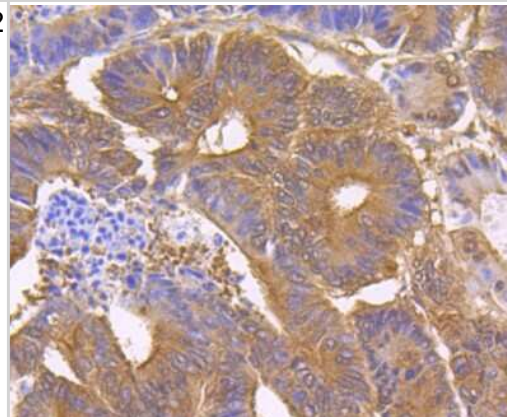
Immunocytochemistry/Immunofluorescence: CHIP/STUB1 Antibody (JG38-22) [NBP2-75440] - Staining STUB1 in 293T cells (green). The nuclear counter stain is DAPI (blue). Cells were fixed in paraformaldehyde, permeabilised with 0.25% Triton X100/PBS.



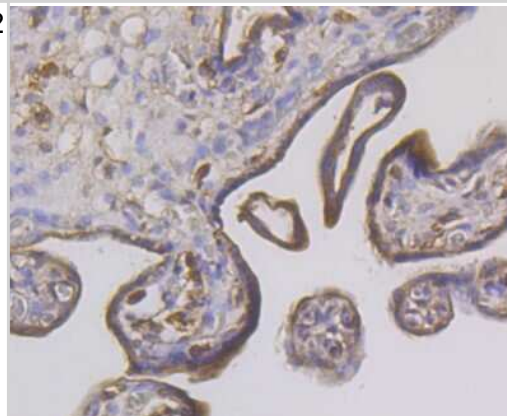
Immunocytochemistry/Immunofluorescence: CHIP/STUB1 Antibody (JG38-22) [NBP2-75440] - Staining STUB1 in LOVO cells (green). The nuclear counter stain is DAPI (blue). Cells were fixed in paraformaldehyde, permeabilised with 0.25% Triton X100/PBS.



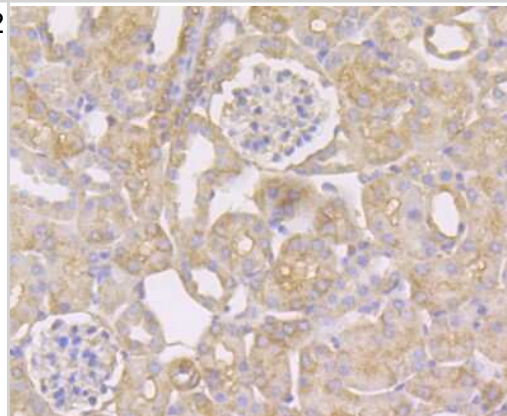
Immunohistochemistry-Paraffin: CHIP/STUB1 Antibody (JG38-22) [NBP2-75440] - Analysis of paraffin-embedded human colon cancer tissue using anti-STUB1 antibody. Counter stained with hematoxylin.



Immunohistochemistry-Paraffin: CHIP/STUB1 Antibody (JG38-22) [NBP2-75440] - Analysis of paraffin-embedded human placenta tissue using anti-STUB1 antibody. Counter stained with hematoxylin.



Immunohistochemistry-Paraffin: CHIP/STUB1 Antibody (JG38-22) [NBP2-75440] - Analysis of paraffin-embedded mouse kidney tissue using anti-STUB1 antibody. Counter stained with hematoxylin.





### **Novus Biologicals USA**

10730 E. Briarwood Avenue  
Centennial, CO 80112  
USA  
Phone: 303.730.1950  
Toll Free: 1.888.506.6887  
Fax: 303.730.1966  
nb-customerservice@bio-techne.com

### **Bio-Techne Canada**

21 Canmotor Ave  
Toronto, ON M8Z 4E6  
Canada  
Phone: 905.827.6400  
Toll Free: 855.668.8722  
Fax: 905.827.6402  
canada.inquires@bio-techne.com

### **Bio-Techne Ltd**

19 Barton Lane  
Abingdon Science Park  
Abingdon, OX14 3NB, United Kingdom  
Phone: (44) (0) 1235 529449  
Free Phone: 0800 37 34 15  
Fax: (44) (0) 1235 533420  
info.EMEA@bio-techne.com

### **General Contact Information**

www.novusbio.com  
Technical Support: nb-technical@bio-techne.com  
Orders: nb-customerservice@bio-techne.com  
General: novus@novusbio.com

### **Products Related to NBP2-75440**

---

NBP2-33376H	Blue Marker Antibody (6F4-F6) [HRP]
HAF008	Goat anti-Rabbit IgG Secondary Antibody [HRP]
NB7160	Goat anti-Rabbit IgG (H+L) Secondary Antibody [HRP]
NBP2-24891	Rabbit IgG Isotype Control

---

### **Limitations**

This product is for research use only and is not approved for use in humans or in clinical diagnosis. Primary Antibodies are guaranteed for 1 year from date of receipt.

For more information on our 100% guarantee, please visit [www.novusbio.com/guarantee](http://www.novusbio.com/guarantee)

Earn gift cards/discounts by submitting a review: [www.novusbio.com/reviews/submit/NBP2-75440](http://www.novusbio.com/reviews/submit/NBP2-75440)

Earn gift cards/discounts by submitting a publication using this product:  
[www.novusbio.com/publications](http://www.novusbio.com/publications)

