

Product Datasheet

Siglec-2/CD22 Antibody (hL22 (Epratuzumab)) - Chimeric - Azide and BSA Free **NBP2-75189**

Unit Size: 0.2 mg

Store at 4C for up to 3 months. For longer storage, aliquot and store at -20C.

www.novusbio.com



technical@novusbio.com

Protocols, Publications, Related Products, Reviews, Research Tools and Images at:
www.novusbio.com/NBP2-75189

Updated 2/24/2026 v.20.1

Earn rewards for product reviews and publications.

Submit a publication at www.novusbio.com/publications

Submit a review at www.novusbio.com/reviews/destination/NBP2-75189



NBP2-75189

Siglec-2/CD22 Antibody (hL22 (Epratuzumab)) - Chimeric - Azide and BSA Free

Product Information	
Unit Size	0.2 mg
Concentration	1 mg/ml
Storage	Store at 4C for up to 3 months. For longer storage, aliquot and store at -20C.
Clonality	Monoclonal
Clone	hL22 (Epratuzumab)
Preservative	0.02% Proclin 300
Isotype	IgG Kappa
Purity	Protein A purified
Buffer	PBS

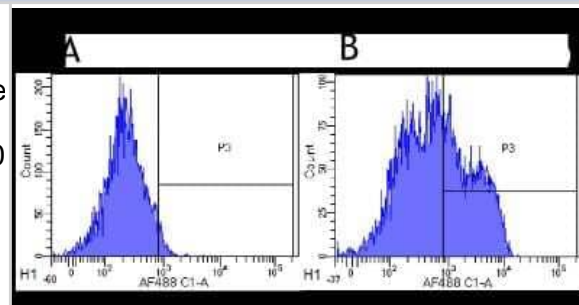
Product Description	
Description	Novus Biologicals Rabbit Siglec-2/CD22 Antibody (hL22 (Epratuzumab)) - Chimeric - Azide and BSA Free (NBP2-75189) is a recombinant monoclonal antibody validated for use in Flow and IP. All Novus Biologicals antibodies are covered by our 100% guarantee.
Host	Rabbit
Gene ID	933
Gene Symbol	CD22
Species	Human, Cynomolgus Monkey, Rhesus Macaque
Specificity/Sensitivity	This antibody is specific for the 3rd Ig-like domain of human CD22 (epitope B), a cell surface glycoprotein present on mature B-cells and on many types of malignant B-cells.
Immunogen	This antibody was prepared by the humanization of LL2 (EPB-2), a murine anti-CD22 IgG2a raised against Raji Burkitt lymphoma cells. Murine sequences comprise 5-10% of the molecule, with the remainder being human framework sequences, which greatly reduces the potential for immunogenicity (Traczewski, 2010).

Product Application Details	
Applications	Flow Cytometry, Immunoprecipitation, Block/Neutralize
Recommended Dilutions	Flow Cytometry 1:100 - 1:1000, Immunoprecipitation 1:10 - 1:500, Block/Neutralize
Application Notes	This chimeric rabbit antibody was made using the variable domain sequences of the original Human IgG1 format, for improved compatibility with existing reagents, assays and techniques.

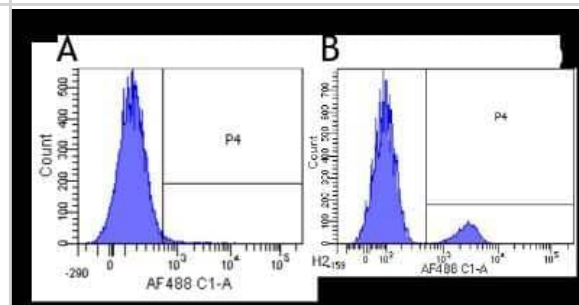


Images

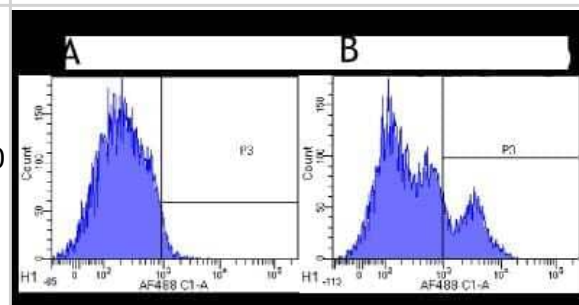
Flow Cytometry: Siglec-2/CD22 Antibody (hL22 (Epratuzumab)) - Chimeric [NBP2-75189] - Flow-cytometry using anti-CD22 antibody Epratuzumab. Rhesus monkey lymphocytes were stained with an isotype control (NBP2-52636, panel A) or the rabbit-chimeric version of Epratuzumab (NBP2-75189, panel B) at a concentration of 1 ug/ml for 30 mins at RT. After washing, bound antibody was detected using a AF488 conjugated donkey anti-rabbit antibody and cells analysed on a FACSCanto flow-cytometer.



Flow Cytometry: Siglec-2/CD22 Antibody (hL22 (Epratuzumab)) - Chimeric [NBP2-75189] - Flow-cytometry using anti-CD22 antibody Epratuzumab. Human lymphocytes were stained with an isotype control (panel A) or the rabbit-chimeric version of Epratuzumab (NBP2-75189, panel B) at a concentration of 1 ug/ml for 30 mins at RT. After washing, bound antibody was detected using a AF488 conjugated donkey anti-rabbit antibody and cells analysed on a FACSCanto flow-cytometer.



Flow Cytometry: Siglec-2/CD22 Antibody (hL22 (Epratuzumab)) - Chimeric [NBP2-75189] - Flow-cytometry using anti-CD22 antibody Epratuzumab. Cynomolgus monkey lymphocytes were stained with an isotype control (NBP2-52636, panel A) or the rabbit-chimeric version of Epratuzumab (NBP2-75189, panel B) at a concentration of 1 ug/ml for 30 mins at RT. After washing, bound antibody was detected using a AF488 conjugated donkey anti-rabbit antibody and cells analysed on a FACSCanto flow-cytometer.





Novus Biologicals USA

10730 E. Briarwood Avenue
Centennial, CO 80112
USA
Phone: 303.730.1950
Toll Free: 1.888.506.6887
Fax: 303.730.1966
nb-customerservice@bio-techne.com

Bio-Techne Canada

21 Canmotor Ave
Toronto, ON M8Z 4E6
Canada
Phone: 905.827.6400
Toll Free: 855.668.8722
Fax: 905.827.6402
canada.inquires@bio-techne.com

Bio-Techne Ltd

19 Barton Lane
Abingdon Science Park
Abingdon, OX14 3NB, United Kingdom
Phone: (44) (0) 1235 529449
Free Phone: 0800 37 34 15
Fax: (44) (0) 1235 533420
info.EMEA@bio-techne.com

General Contact Information

www.novusbio.com
Technical Support: nb-technical@bio-techne.com
Orders: nb-customerservice@bio-techne.com
General: novus@novusbio.com

Products Related to NBP2-75189

HAF008	Goat anti-Rabbit IgG Secondary Antibody [HRP]
NB7160	Goat anti-Rabbit IgG (H+L) Secondary Antibody [HRP]
NBP1-87041PEP	Siglec-2/CD22 Recombinant Protein Antigen
7268-CT-100	CTLA-4 [Unconjugated]

Limitations

This product is for research use only and is not approved for use in humans or in clinical diagnosis. Primary Antibodies are guaranteed for 1 year from date of receipt.

For more information on our 100% guarantee, please visit www.novusbio.com/guarantee

Earn gift cards/discounts by submitting a review: www.novusbio.com/reviews/submit/NBP2-75189

Earn gift cards/discounts by submitting a publication using this product:
www.novusbio.com/publications

